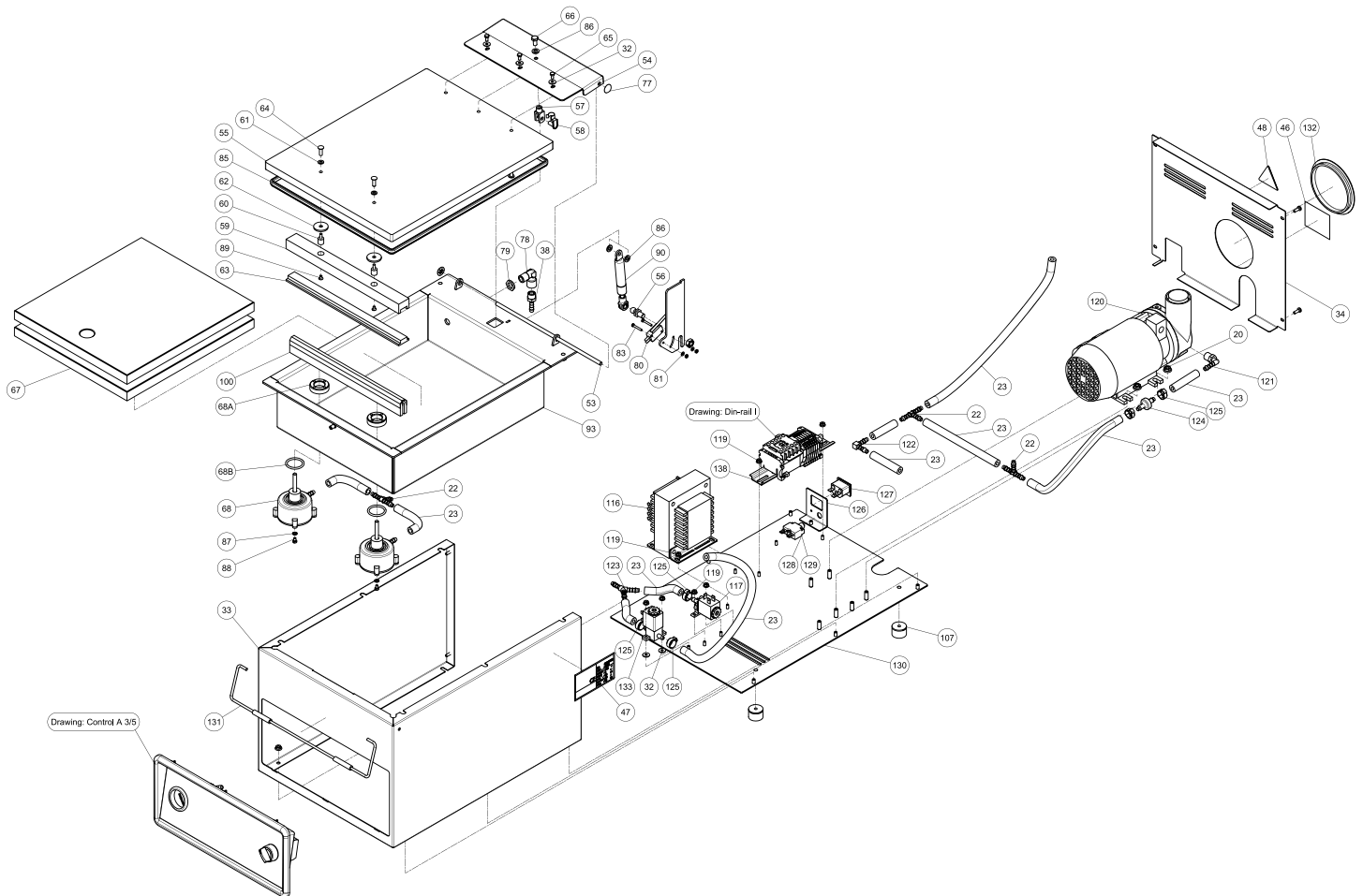


Parts Breakdown

Model VP-NL-0004-S 50006

Model VP-NL-0008-S 50007



Parts Breakdown

Model VP-NL-0004-S 50006

Model VP-NL-0008-S 50007

Item No.	Description	Position	Item No.	Description	Position	Item No.	Description	Position
27781	Hexagon Flangenut M6 Din6923 A2 for S20	20	30004	Hexagon Screw M4x8 Din 933 A2 for S20	65	35039	Combi-Transformer P100/230V-S16/24V for S20	116
27836	Connecting Piece T-Piece 6mm for S20	22	30005	Hexagon Screw M6x12 Din933 A2 for S20	66	35040	Decompress Valve 303500 for S20	117
27837	Hose (O2) Drago 6x13 for S20	23	30006	Insert Plate 120/140-ST for S20	67	35041	Hexagon Flange Nut M4 Din6923-A2 for S20	119
34998	Flat Washer M4 D9021 A2 for S20	32	30007	Seal Cylinder 305500 for S20	68	30014	Vacuum Pump 004-316 220/240-1-50/60 for S20	120
29995	Bottom Section 120/140-ST for S20	33	30007	Nut M20 for S20	68A	30015	Square Hose Coupling 1/4"x6 Ext. for S20	121
29996	Backplate 120/140-ST for S20	34	30007	O-Ring 26,2x3mm for S20	68B	30016	Square Connect Piece 6mm for S20	122
29997	Brass Hose Coupling 1/4"x6 Ext. for S20	38	27810	Spring Ring with Cover 6mm for S20	77	30017	Connecting Piece 6mm Pos Art. NR Description for S20	123
27796	Sticker Oil for S20	46	30009	Elbow 1/4" Int/Ext Brass for S20	78	30018	Non-Return Valve 7-10mm for S20	124
27794	Sticker Machine Type for S20	47	30010	Brass Nut 1/4" for S20	79	30019	Hose Clip Klemfa 12.8x14.8mm for S20	125
27795	Sticker Tension Triangle for S20	48	35026	Micro Controller MV3003L for S20	80	30020	Holder Net Entree STF-42 for S20	126
29998	Hinge Bearing ST.ST. 6x255 for S20	53	27822	Castle Washer M3 for S20	81	44791	Net Entree Male Snap-In STF42 for S20	127
29999	Hinge Part for S20	54	30011	Slotted Cheese Head Screw M3x20 A2 Din84 for S20	83	30021	Thermal Fuse 4A for S20	128
30000	Vacuum Cover 120/140-ST for S20	55	35291	Sil.Profile Lid Gasket 5,5mm 60°SH/25MTR for S20	85	30022	Thermal Fuse 8A for S20	129
30001	Balltap 03/ACR L=12 for S20	56	27824	Castle Washer M6 for S20	86	30023	Bottom Plate 120/140-ST for S20	130
27808	Adjusting Fork for S20	57	27829	Veerring Vertand M4 DIN 6798-A for S20	87	30024	Lid Locker 120/140-ST for S20	131
27809	Adjusting Fork Closing Pin for S20	58	27830	Slotted Cheese Head Screw M4x6 A2 Din84 for S20	88	30025	Closing Plug GPN 120/140-ST for S20	132
30002	Silicon Holder 120/140-ST for S20	59	30012	Slott.Countersunk Head Screw M4x6 Din963 A2 for S20	89	35055	3-Way Valve 500260 for S20	133
35085	Vibration Absorber Silicon Holder ACR. Cover for S20	60	35034	Gas Spring 1752VI / 275N Ball-Head for S20	90	27814	Hexagon Nut M8 Din934 A2 for S20	134
27804	Closing Ring 10x5x1 70 Shore for S20	61	30013	Vacuum Chamber 120/140-ST for S20	93	27823	Hexagon Nut M3 Din934 A2 for S20	135
15853	Ring Nylon (33-5) for S20	62	15884	Seal Beam Single Seal for S20	100	30026	Slott.Rais.Counter.Head Screw M4x12 Din7985 A2 for S20	136
35015	Silicon T-Profile 40° Shore - 25M for S20	63	35063	Vibration Absorber Foot for S20	107	27839	Assembly Control A 3/5 for S20	137
15701	Book Screw Brass 350/15 for S20	64	27782	Hexagon Flangenut M5 Din6923 A2 for S20	108	30028	Din-Conductor I 220-240V-1~ Assemb. for S20	138