



Led Writing Board Instruction

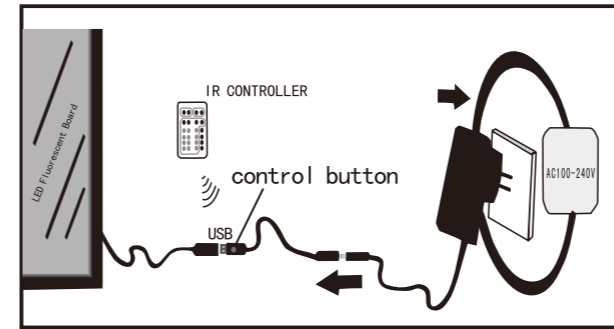
This Instruction applies to LedWriting Board series products



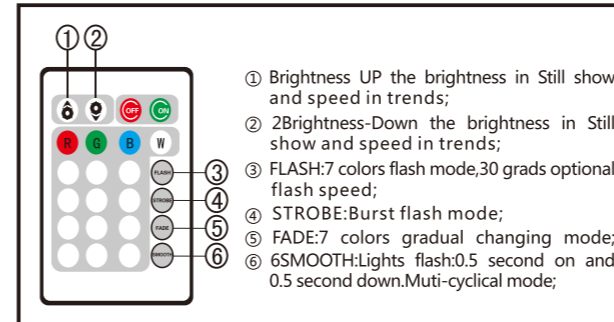
Instruction Of Led Writing Board

1. Open the package, check the products and full items of accessories to confirm whether it works well after connecting the power. Methods of changing mode: Push the switch to adjust the lighting flashing mode, one press one different mode, choose freely. (Both hand control and remote control)
2. Best if panel are cleaned before writing. Method: first use the wring dry a wet cloth and the dry cloth clean again carefully.
3. Write your promotion message with fluorescent marker pen after cleaning. It's better connect with electricity when drawing. You could easy see its fluorescent effect and revise.
4. After drawing, dry the board in horizontal, and then display by hanging with the chain or standing with triangular stand. It has two hooks at back, can be moved in horizontal or vertical.
5. We suggest you to change the message on the board regularly so as to make sure of rich content and colorful effect.

Remote& Led Writing Board Connection Method



Operation Instruction Of Controller



Product Features

- Change the writing content casually: give full play to creativity, various handwritten forms, reflect chic in random, build a different atmosphere.
- Repeatedly Using: this product has the function of being used repeatedly, wiping the board surface can rewrite and replacing the contents of advertisements.
- Fluorescent effect: using the fluorescent pen can the content brilliant; Adjustable multiple flash modes (7 colour fluorescent marker pen).
- Energy saving: Using 12V high quality adapter, automatic power transformer; 500 hours of power consumption only need one kilowatt hour, safe, power-saving and environmental protection.
- Special reminder: please use the fluorescent marker pen, advertising effect will be more beautiful and colorful.

Works Parameters

Specification	Power	Input Voltage	Output Voltage
60*80CM	6 W	100-240VAC	12VDC
50*70CM	4.8W	100-240VAC	12VDC
40*60CM	3.6W	100-240VAC	12VDC
30*40CM	2.4W	100-240VAC	12VDC

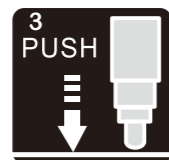
Marker Pen Using Method



First time use place marker tip up vertically press tip slightly to release pressure

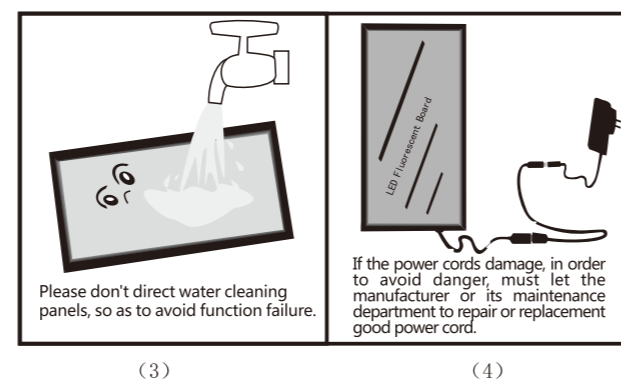
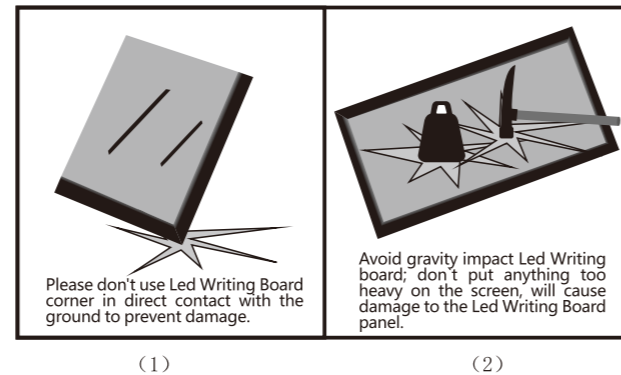


Shake well with cap on and up-right remove cap.



Press tip for a few seconds until tip fills with ink. Recap tightly after use and store in horizontal position.

Security Considerations



Simple Troubleshooting

1. No bright of led writing board: check whether the power light is bright, the parts connected well.
2. Controller no function: check out the battery spacer of the remote control, the battery is low; be sure the remote control receiver and the power cord controller alignment.

Warranty

1. LED fluorescent Board from the date of sale with warranty card and the product barcode has one year warranty. (The panel is beyond the scope of the warranty)
2. The following circumstance is not covered by the warranty:
 - (1) Due to water, damp, lightning, fire and other damage caused by natural disasters.
 - (2) Modification, repair, demolition dynamic, electricity properly, overload-All the artificial damage.
 - (3) The damage not according to specifications use, maintenance, custody.
 - (4) Beyond the warranty period of the products.
3. The warranty shall provide the card, failed to provide the card, altered the card or not in conformity with products, we reserves the right to do non-warranty processing.

Display Methods

