



## ***Refrigerated Showcases***

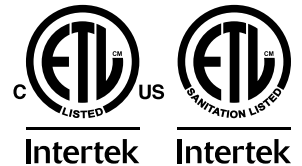
Models RS-CN-0490, 0490-L

Items 48272, 48273

## ***Instruction Manual***



*Revised - 08/19/2024*



Toll Free: 1-800-465-0234  
Fax: 905-607-0234  
Email: [service@omcan.com](mailto:service@omcan.com)  
[www.omcan.com](http://www.omcan.com)



# ***Table of Contents***

Model RS-CN-0490 / Model RS-CN-0490-L

---

| <b>Section</b>                 | <b>Page</b> |
|--------------------------------|-------------|
| Disclaimer -----               | 3           |
| General Information -----      | 4 - 5       |
| Safety and Warranty -----      | 5 - 8       |
| Technical Specifications ----- | 9           |
| Operation -----                | 9 - 10      |
| Maintenance -----              | 10          |
| Troubleshooting -----          | 10 - 11     |
| Parts Breakdown -----          | 12 - 17     |
| Electrical Schematics -----    | 18          |
| Warranty Registration -----    | 19          |

## **Disclaimer**

---

*OMCAN IS NOT RESPONSIBLE FOR ANY DAMAGES DUE TO WATER LEAKS. WARRANTY FOR WATER LEAKS IS VOID IF THE WICKING PAD IS NOT REPLACED EVERY SIX MONTHS, AND IF THE AMBIENT ROOM TEMPERATURE EXCEEDS 75°F AND 55% RELATIVE HUMIDITY, AND THE APPLIANCE DRAIN IS NOT CONNECTED DIRECTLY TO THE FLOOR DRAIN.*

---

*OMCAN N'EST PAS RESPONSABLE DES DOMMAGES DUS AUX FUITES D'EAU. LA GARANTIE POUR LES FUITES D'EAU EST ANNULÉE SI LE TAMPON ABSORBANT N'EST PAS REMPLACÉ TOUS LES SIX MOIS, ET SI LA TEMPÉRATURE AMBIANTE DE LA PIÈCE DÉPASSE 75°F ET 55% D'HUMIDITÉ RELATIVE, ET QUE LE DRAIN DE L'APPAREIL N'EST PAS RACCORDÉ DIRECTEMENT AU DRAIN DE PLANCHER.*

---

*OMCAN NO SE HACE RESPONSABLE DE LOS DAÑOS CAUSADOS POR FUGAS DE AGUA. LA GARANTÍA POR FUGAS DE AGUA QUEDA ANULADA SI LA ALMOHADILLA ABSORBENTE NO SE REEMPLAZA CADA SEIS MESES, Y SI LA TEMPERATURA AMBIENTE SUPERA LOS 75°F Y EL 55% DE HUMEDAD RELATIVA, Y EL DESAGÜE DEL APARATO NO ESTÁ CONECTADO DIRECTAMENTE AL DESAGÜE DEL PISO.*

## **General Information**

---

**Omcan Manufacturing and Distributing Company Inc., Food Machinery of America, Inc. dba Omcan and Omcan Inc. are not responsible for any harm or injury caused due to any person's improper or negligent use of this equipment. The product shall only be operated by someone over the age of 18, of sound mind, and not under the influence of any drugs or alcohol, who has been trained in the correct operation of this machine, and is wearing authorized, proper safety clothing. Any modification to the machine voids any warranty, and may cause harm to individuals using the machine or in the vicinity of the machine while in operation.**

### **CHECK PACKAGE UPON ARRIVAL**

Upon receipt of an Omcan shipment please inspect for external damage. If no damage is evident on the external packaging, open carton to ensure all ordered items are within the box, and there is no concealed damage to the machine. If the package has suffered rough handling, bumps or damage (visible or concealed), please note it on the bill of lading before accepting the delivery and contact Omcan within 24 hours, so we may initiate a claim with the carrier. A detailed report on the extent of the damage caused to the machine must be filled out within three days, from the delivery date shown in the shipping documents. Omcan has no recourse for damaged products that were shipped collect or third party.

**Before operating any equipment, always read and familiarize yourself with all operation and safety instructions.**

**Omcan would like to thank you for purchasing this machine. It's of the utmost importance to save these instructions for future reference. Also save the original box and packaging for shipping the equipment if servicing or returning of the machine is required.**

---

**Omcan Fabrication et distribution Compagnie Limité et Food Machinery d'Amérique, dba Omcan et Omcan Inc. ne sont pas responsables de tout dommage ou blessure causé du fait que toute personne ait utilisé cet équipement de façon irrégulière. Le produit ne doit être exploité que par quelqu'un de plus de 18 ans, sain d'esprit, et pas sous l'influence d'une drogue ou d'alcool, qui a été formé pour utiliser cette machine correctement, et est vêtu de vêtements de sécurité appropriés. Toute modification de la machine annule toute garantie, et peut causer un préjudice à des personnes utilisant la machine ou des personnes à proximité de la machine pendant son fonctionnement.**

### **VÉRIFIEZ LE COLIS DÈS RÉCEPTION**

Dès réception d'une expédition d'Omcan veuillez inspecter pour dommages externes. Si aucun dommage n'est visible sur l'emballage externe, ouvrez le carton afin de s'assurer que tous les éléments commandés sont dans la boîte, et il n'y a aucun dommage dissimulé à la machine. Si le colis n'a subi aucune mauvaises manipulations, de bosses ou de dommages (visible ou cachée), notez-le sur le bond de livraison avant d'accepter la livraison et contactez Omcan dans les 24 heures qui suivent, pour que nous puissions engager une réclamation auprès du transporteur. Un rapport détaillé sur l'étendue des dommages causés à la machine doit être rempli dans un délai de trois jours, à compter de la date de livraison indiquée dans les documents d'expédition. Omcan n'a aucun droit de recours pour les produits endommagés qui ont été expédiés ou cueillis par un tiers transporteur.

**Avant d'utiliser n'importe quel équipement, toujours lire et vous familiariser avec toutes les opérations et les**

## General Information

consignes de sécurité.

Omcan voudrais vous remercier d'avoir choisi cette machine. Il est primordial de conserver ces instructions pour une référence ultérieure. Également conservez la boîte originale et l'emballage pour l'expédition de l'équipement si l'entretien ou le retour de la machine est nécessaire.

Omcan Empresa De Fabricacion Y Distribucion Inc. Y Maquinaria De Alimentos De America, Inc. dba Omcan y Omcan Inc. no son responsables de ningun daño o perjuicio causado por cualquier persona inadecuada o el uso descuidado de este equipo. El producto solo podra ser operado por una persona mayor de 18 años, en su sano juicio y no bajo alguna influencia de droga o alcohol, y que este ha sido entrenado en el correcto funcionamiento de esta máquina, y ésta usando ropa apropiada y autorizada. Cualquier modificación a la máquina anula la garantía y puede causar daños a las personas usando la máquina mientras esta en el funcionamiento.

### REVISE EL PAQUETE A SU LLEGADA

Tras la recepcion de un envio Omcan favor inspeccionar daños externos. Si no hay daños evidentes en el empaque exterior, Habra el carton para asegurarse que todos los articulos solicitados estén dentro de la caja y no encuentre daños ocultos en la máquina. Si el paquete ha sufrido un manejo de poco cuidado, golpes o daños (visible o oculto) por favor anote en la factura antes de aceptar la entrega y contacte Omcan dentro de las 24 horas, de modo que podamos iniciar una reclamación con la compañía. Un informe detallado sobre los daños causados a la máquina debe ser llenado en el plazo de tres días, desde la fecha de entrega que se muestra en los documentos de envío. Omcan no tiene ningun recurso por productos dañados que se enviaron a recoger por terceros.

Antes de utilizar cualquier equipo, siempre lea y familiarizarse con todas las instrucciones de funcionamiento y seguridad.

Omcan le gustaría darle las gracias por la compra de esta máquina. Es de la mayor importancia para salvar estas instrucciones para futuras consultas. Además, guarda la caja original y el embalaje para el envío del equipo si servicio técnico o devolución de la máquina que se requiere.

## Safety and Warranty

### HANDLE AND ASSEMBLING



#### Handle with care

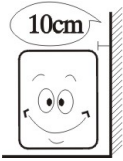
Unplug wall socket before moving. Never tilt the refrigerator over 45 degrees during handling.



#### Storage

Always store refrigerator in a dry place.

# Safety and Warranty



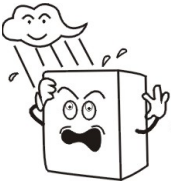
### Sufficient space

To allow for proper air circulation and increased refrigeration capabilities, the refrigerator must have at least 3 inches of space between wall and unit.



### Proper ventilation

Always place the refrigerator in an area with good ventilation. For first time use, wait at least 2 hours before plugging into wall socket.



### X Away from heat source

Never place the refrigerator near any type of heat source or in direct sunlight, as it reduces refrigeration capabilities.



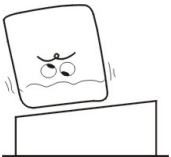
### X No heavy load

Never put heavy items on top of the refrigerator.



### No alterations/tampering

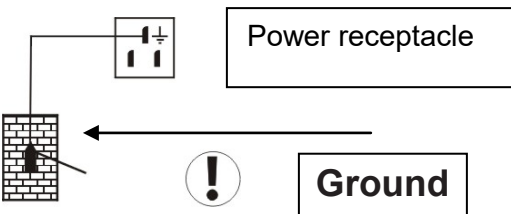
Never tamper with, or make changes to the refrigerator. Changes and add-ons should not be installed to the inside or outside of the refrigerator.



### Stable location

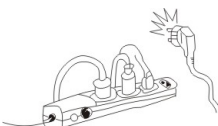
Unpack and place the refrigerator on flat, solid ground.

## PREPARATION AND POWER SUPPLY



### Exclusive power socket

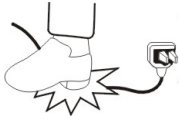
Power supply should be 110-120V, single phase AC with exclusive single phase three pin outlet and fuse (8A). The power outlet must be in close proximity to the ground.



### No shared power outlets

Refrigerator cable should never share the power outlet with any other appliance, as cable will overheat and may result in a fire.

## Safety and Warranty

**X****Protect cables**

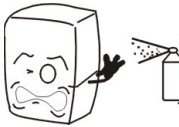
Extra caution should be used when handling cables, as broken or damaged cables can cause sparking and may result in a fire.

**X****No water flushing**

Never flush the refrigerator surface. This can cause leakage, which may result in electrical damage or fire.

**X****Never store flammables and explosives**

No explosives or flammables should be stored in, or in proximity to, the refrigerator, such as gasoline, alcohol, and adhesives.

**X****No spray**

Never spray flammables such as paint or coating near the refrigerator. This may cause fire or malfunction.

**X****After power outage**

After a power outage or the unplugging of the refrigerator, wait at least 5 minutes before plugging it back in.

**X****No medicine**

Medicine should not be stored inside of the refrigerator.

### CAUTIONS

- If the supply cord is damaged, it must be replaced by the manufacturer, its service agent or similarly qualified persons in order to avoid a hazard.
- Do not store explosive substances such as aerosol cans with a flammable propellant in this appliance.
- Never block the air suction and outlet. Keep air circulation and refrigeration capability. Do not make food congested as it will influence the cooling effect. Adjust the rack height for proper food storage.
- Cool the hot food down to room temperature before you put it into the refrigerator.
- Try to pull down the curtain and keep refrigerator inside cold in case the power is cut off.
- Never touch compressor to avoid from scald.
- During normal operation, the emission noise level does not exceed 70dB(A). The maximum loading of the shelf does not exceed 18kg.
- The climatic class of the appliance is 4, the units are suggested to be used at 16 -27°C (60.8 -80.6°F) ambient temperature.
- To avoid damages or other problems, this product can not be put or stored with any corrosive food.

**RESIDENTIAL USERS: vendor assumes no liability for parts or labor coverage for component failure or other**

## ***Safety and Warranty***

---

damages resulting from installation in non-commercial or residential applications. The right is reserved to deny shipment for residential usage; if this occurs, you will be notified as soon as possible.

### **1 YEAR PARTS AND LABOUR WARRANTY**

Within the warranty period, contact Omcan Inc. at 1-800-465-0234 to schedule an Omcan authorized service technician to repair the equipment locally.

Unauthorized maintenance will void the warranty. Warranty covers electrical and part failures, not improper use.

Please see <https://omcan.com/disclaimer> for complete info.

### **WARNING:**

The packaging components are classified as normal solid urban waste and can therefore be disposed of without difficulty.

In any case, for suitable recycling, we suggest disposing of the products separately (differentiated waste) according to the current norms.

**DO NOT DISCARD ANY PACKAGING MATERIALS IN THE ENVIRONMENT!**



# Technical Specifications

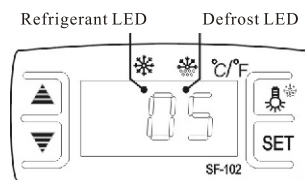
| Model                   | RS-CN-0490                                 | RS-CN-0490-L                                 |
|-------------------------|--|--|
| Item Number             | 48272                                      | 48273  |
| Type                    | Black                                      | Stainless Steel                              |
| Capacity                | 426 L / 15.04 cu.ft.                       |  |
| Temperature Range       | 2 - 10°C / 35.6 - 50°F                     |  |
| Max Ambient Temp Rating | 24°C / 75°F                                |  |
| Electrical              | 110-120V / 60Hz / 1                        |  |
| Power                   | 1300 W                                     |  |
| Refrigerant             | R290                                       |  |
| Class                   | 3  |  |
| Net Dimensions          | 47.3" x 33.3" x 59"<br>1203 x 847 x 1500mm | 47.4" x 31.9" x 57.4"<br>1204 x 811 x 1459mm |
| Packaging Dimensions    | 50" x 36.2" x 65.7"<br>1270 x 920 x 1670mm | 50" x 34.6" x 64"<br>1270 x 880 x 1625mm     |

## Operation

### BEFORE USE:

1. Plug in the device in a 110-120V socket.
2. After the refrigerator starts running, place a hand on the air suction to confirm it is sufficiently cold. Then you may put food inside the cold box.
3. This appliance is not intended for use by persons (including children) with reduced physical, sensory or mental capabilities, or lack of experience and knowledge, unless they have been given supervision or instruction concerning use of the appliance by a person responsible for their safety. Children should be supervised to ensure that they do not play with the appliance.
4. The operation manual are not suitable for the persons (including children) with reduced physical, sensory or mental capabilities, or lack of experience and knowledge.

### DIGITAL TEMPERATURE CONTROLLER



# Operation



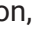





---

## FEATURES OF FUNCTION

It is a mini-sized and integrated intelligent controller and applicable to the compressor of one HP.

- The main functions are: temperature display, temperature control, manual / automatic defrost by burning off, illumination control, value storing, self testing, parameter locking.

## CONTROLLER OPERATING INSTRUCTIONS

1. Set temperature: press  button, the set temperature is displayed. Press  or  button to modify and store the displayed value. Press  button to exit the adjustment and display the cold-room temperature.
2. If no more button is pressed within 10 seconds, the cold-room temperature will be displayed.
3. Illumination: press  button, it lights; press again, it stops. Manual start/stop defrost: press  button and hold for 6 seconds to defrost or stop defrost.
4. The indicator light twinkles when the compressor stops working and the indicator light is on when the compressor is working.
5. Defrost LED: during defrosting, the LED is on; when it stops defrosting, the LED is off, during the delay display of defrost, the LED flashes.
6. Digital controller reset. When display shows "Disorder", press  button for 2s until buzzer rings, quickly press  button for 6s until buzzer rings again, the display will flash for 3s and it restores factory setting.

# Maintenance

---

1. Cabinet cleaning. The product should be cleaned once a week with power supply disconnected. In cleaning please use mild rinsing water or non-corrosive cleanser essence. Do not wash it directly with water faucet.
2. Leaking check. Observe all connectors and welding joints for oil stain, which indicates a must for patching measures or call for professionals.
3. Frequently observe the operation of the product. In case of any abnormal noise, smell or smog, cut off the power supply immediately and call for professionals for help. Do not restart the product before trouble is cleared.
4. We will not be responsible for any accident incurred by failures of following the notices.

# Troubleshooting

---

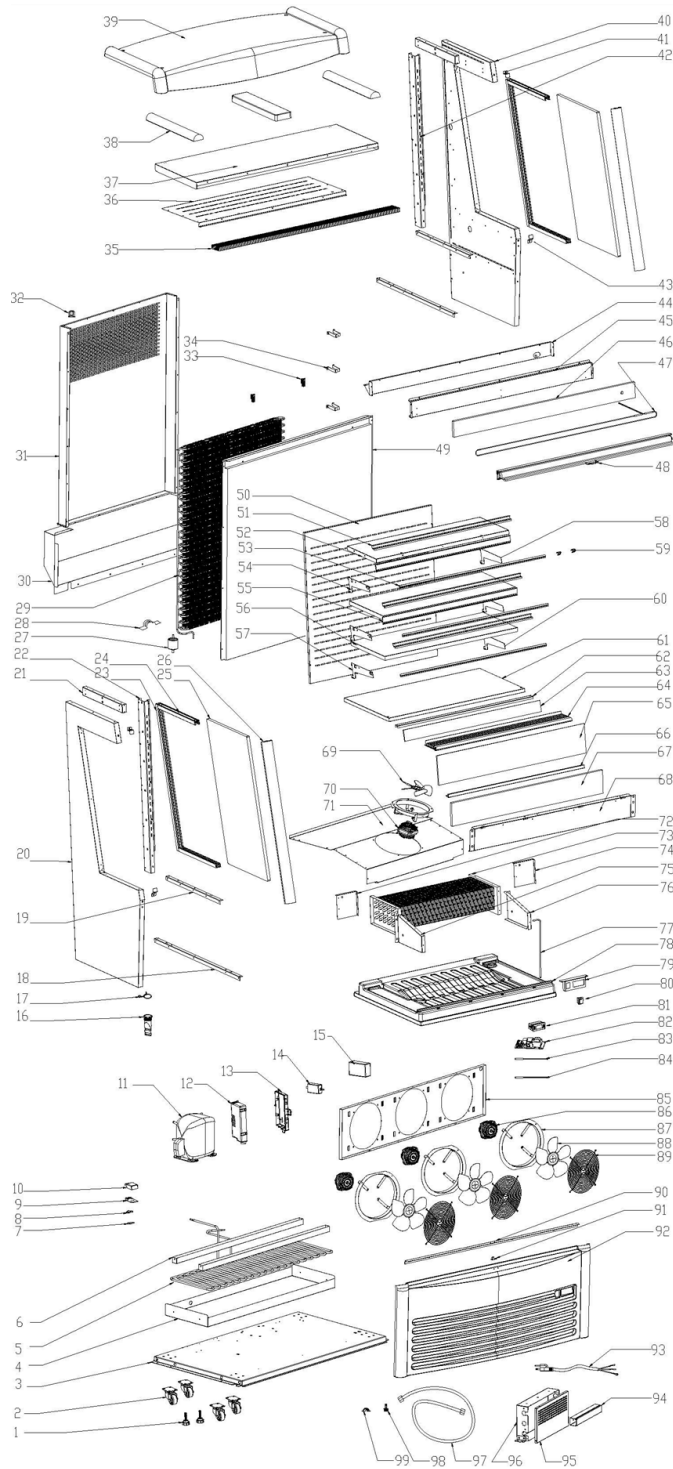
| Troubles                              | Causes            | Solutions                    |
|---------------------------------------|-------------------|------------------------------|
| Strange noise under the bottom shelf. | Fan blade broken. | Power off and fix the blade. |

## Troubleshooting

|  |   |  |
|--|---|--|
| Non-refrigerating in spite of normal operation.                        | Unit off.   | Power on.  |
|  | Melting process.                                  | Stop melting.  |
|  | Refrigerant leaking.                              | Patch the leak and refill refrigerant.               |
|  | Unit failure.                                     | Call for professionals.                              |
| Weak air from air curtain, and higher cabinet temperature.             | Evaporator blocked by frost.                      | Increase melting frequency.                          |
|  | Inside fan damaged.                               | Replace the fan.                                     |
|  | Too low set point of temperature controller.      | Adjust the set point.                                |
|  | Vent blocked by storage.                          | Remove the storage.                                  |
| Normal air curtain, but higher cabinet temperature.                    | Insufficient refrigerant.                         | Refill the refrigerant.                              |
|  | Too high set point of temperature controllers.    | Adjust the set point for the temperature controller. |
|  | The wind curtain disturbed by strong air flow.    | Removing the disturbing factors.                     |
|  | Ambient temperature or humidity beyond standards. | Improve the conditions.                              |
| Melting water overflown.   | Heating pipe for melting water damaged.           | Replace the heating pipe.                            |
|  | Water-level controller failure.                   | Replace the water-level controller.                  |
|  | Ambient temperature or humidity beyond standards. | Improve the conditions.                              |
| Normal air curtain, but periodical fluctuation of cabinet temperature. | Condenser contaminated.                           | Clean the condenser.                                 |
|  | Poor venting of the unit.                         | Improve the venting conditions.                      |
|  | Heat protection of compressor failure.            | Replace the heat protection.                         |
|  | Capillary is blocked by ice.                      | Replace the drying filter.                           |
|  | Temperature controller failure.                   | Replace the temperature controller.                  |

# Parts Breakdown

**Model RS-CN-0490** 48272



# Parts Breakdown

## Model RS-CN-0490 48272

| Item No. | Description                                    | Position | Item No. | Description                                   | Position | Item No. | Description                                | Position |
|----------|--|----------|----------|---|----------|----------|--|----------|
| 60672    | Feet for 48272                                 | 1        | AL315    | Front Pillar of Side Glass for 48272          | 26       | AQ612    | Upper Shelf for 48272                      | 52       |
| AL357    | Castor for 48272                               | 2        | 61224    | Dry Filter for 48272                          | 27       | AQ613    | LED Light for 48272                        | 53       |
| AQ592    | Base Plate for 48272                           | 3        | 68302    | Pressing Plate of Dry Filter for 48272        | 28       | AL341    | Left Support Pillar of Shelf for 48272     | 54       |
| AQ593    | Tray of Heater for 48272                       | 4        | AL370    | Condenser for 48272                           | 29       | AQ614    | Price Tag Holder for 48272                 | 55       |
| AQ594    | High Pressure Evaporated Copper Tube for 48272 | 5        | AQ597    | Base Rear Cover for 48272                     | 30       | AQ615    | Bottom Shelf for 48272                     | 56       |
| AQ595    | Platen of Heater for 48272                     | 6        | 68423    | Condenser Cover for 48272                     | 31       | AQ616    | Lower Shelf Left Bracket for 48272         | 57       |
| 61246    | Wire Clip Holder for 48272                     | 7        | 60670    | PPR Tube Strap for 48272                      | 32       | AL342    | Right Support Pillar of Shelf for 48272    | 58       |
| 66095    | Wire Clip Cover for 48272                      | 8        | 61222    | Stands for Condensor for 48272                | 33       | AD500    | Jump Ring of LED for 48272                 | 59       |
| 61244    | Terminal Box for 48272                         | 9        | AQ598    | Ventilated Board Connection for 48272         | 34       | AQ617    | Lower Shelf Right Bracket for 48272        | 60       |
| 79359    | Cover of Terminal Box for 48272                | 10       | AQ599    | Honeycomb Panel for 48272                     | 35       | AQ618    | Bottom Board of Cabinet for 48272          | 61       |
| AI124    | Compressor for 48272                           | 11       | AQ600    | Inner Top Board for 48272                     | 36       | AQ619    | Air Inlet Bracket for 48272                | 62       |
| 60594    | Cover of Circuit Board Box for 48272           | 12       | AQ601    | Top Cover Board for 48272                     | 37       | AQ620    | Air Inlet Baffle Glass for 48272           | 63       |
| 61167    | Circuit Board Box for 48272                    | 13       | AQ602    | Top Cover Foam for 48272                      | 38       | AQ621    | Air Inlet Cover for 48272                  | 64       |
| 67652    | LED Transformer for 48272                      | 14       | AQ603    | Top Cover Decorating for 48272                | 39       | AQ622    | Windshield for 48272                       | 65       |
| AK999    | LED Power for 48272                            | 15       | AL312    | Upper Depressor of Pillar for 48272           | 41       | AQ623    | Windshield Strip for 48272                 | 66       |
| AQ596    | Drain Pipe for 48272                           | 16       | 68431    | Right Support Pillar of Shelf for 48272       | 42       | AQ624    | Evaporator Front Plate PE Cotton for 48272 | 67       |
| AL376    | Circlip for 48272                              | 17       | AL310    | Bottom Depressor of Pillar for 48272          | 43       | AQ625    | Front Board for Evaporator for 48272       | 68       |
| 68407    | Connector of Evaporator Base Panel for 48272   | 18       | AQ604    | Air Pressure Plate for 48272                  | 44       | 66351    | Fan Blade for 48272                        | 69       |
| 68408    | Support for Upper Cover of Base for 48272      | 19       | AQ605    | Board Ahead Night Curtain for 48272           | 45       | AG596    | Evaporator Fan Motor 110V for 48272        | 70       |
| AL311    | Foam of Left Side Board for 48272              | 20, 40   | AQ606    | Night Curtain Front Panel PE Cotton for 48272 | 46       | AQ626    | Evaporator Cover for 48272                 | 71       |
| AL340    | Left Support of Indoor Roof for 48272          | 21       | AQ607    | Heater Line for 48272                         | 47       | AQ627    | Left Wind Screen of Evaporator for 48272   | 72       |
| 68411    | Left Support Pillar of Shelf for 48272         | 22       | AQ608    | Night Curtain for 48272                       | 48       | AQ628    | Evaporator for 48272                       | 73       |
| AL313    | Back Strip for Side Glass for 48272            | 23       | AQ609    | Foam of Back Cover for 48272                  | 49       | AQ629    | Right Wind Screen of Evaporator for 48272  | 74       |
| AL314    | Top/Bottom Strip for Side Glass for 48272      | 24       | AQ610    | Ventilated Board for 48272                    | 50       | 71521    | Left Board of Evaporator Cover for 48272   | 75       |
| 68414    | Side Glass for 48272                           | 25       | AQ611    | Shelf Accessories for 48272                   | 51       | 61180    | Right Board of Evaporator Cover for 48272  | 76       |

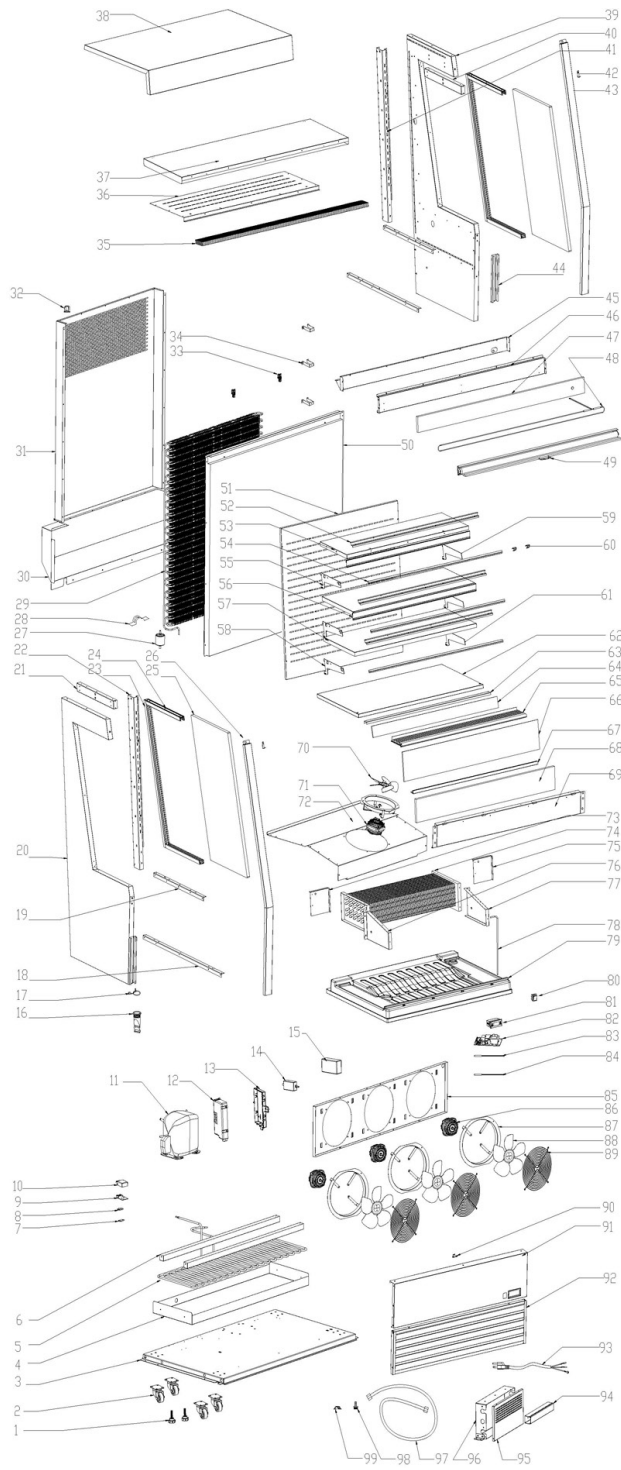
# Parts Breakdown

## Model RS-CN-0490 48272

| Item No. | Description                          | Position | Item No. | Description                                      | Position | Item No. | Description                            | Position |
|----------|--------------------------------------|----------|----------|--|----------|----------|--|----------|
| AQ630    | Connection Pipe for 48272            | 77       | AQ632    | Holder for Condenser Motor for 48272             | 85       | AC057    | Power Cord for 48272                   | 93       |
| AQ631    | Base Foam of Evaporator for 48272    | 78       | AL374    | Evaporator Fan Motor for 48272                   | 86       | 60590    | PVC Trucking for 48272                 | 94       |
| AL327    | Holder for Digital Display for 48272 | 79       | 60932    | Fan Guard for 48272                              | 87       | 67642    | Cover of Terminal Box for 48272        | 95       |
| 71514    | Switch (Green) for 48272             | 80       | 60933    | Fan Blade for 48272                              | 88       | 67643    | Terminal Box for 48272                 | 96       |
| 67648    | Temperature Display for 48272        | 81       | AD519    | Flat Net Cover for 48272                         | 89       | 60668    | Drain Pipe for 48272                   | 97       |
| AF546    | Main Circuit Board for 48272         | 82       | AQ633    | Retaining Plate for Bottom Front Panel for 48272 | 90       | 68398    | Copper Connection for 48272            | 98       |
| 60666    | Temperature Probe for 48272          | 83       | 60651    | Curtain Hook for 48272                           | 91       | 60669    | Pressing Plate of Dry Filter for 48272 | 99       |
| 68333    | Over-Heating Sensor for 48272        | 84       | AQ634    | Bottom Front Panel for 48272                     | 92       |          |  |          |

# Parts Breakdown

**Model RS-CN-0490-L 48273**



# Parts Breakdown

## Model RS-CN-0490-L 48273

| Item No. | Description                                    | Position | Item No. | Description                                   | Position | Item No. | Description                                | Position |
|----------|--|----------|----------|---|----------|----------|--|----------|
| 60672    | Feet for 48273                                 | 1        | 61224    | Dry Filter for 48273                          | 27       | AQ612    | Upper Shelf for 48273                      | 53       |
| AQ635    | Castor for 48273                               | 2        | 68302    | Pressing Plate of Dry Filter for 48273        | 28       | AQ613    | LED Light for 48273                        | 54       |
| AQ592    | Base Plate for 48273                           | 3        | AL370    | Condenser for 48273                           | 29       | AL341    | Left Support Pillar of Shelf for 48273     | 55       |
| AQ593    | Tray of Heater for 48273                       | 4        | AQ597    | Back Cover of Base for 48273                  | 30       | AQ615    | Bottom Shelf for 48273                     | 57       |
| AQ594    | High Pressure Evaporated Copper Tube for 48273 | 5        | 68423    | Condenser Cover for 48273                     | 31       | AQ616    | Lower Shelf Left Bracket for 48273         | 58       |
| AQ595    | Platen of Heater for 48273                     | 6        | 60670    | PPR Tube Strap for 48273                      | 32       | AL342    | Right Support Pillar of Shelf for 48273    | 59       |
| 61246    | Wire Clip Holder for 48273                     | 7        | 61222    | Stands for Condensor for 48273                | 33       | AD500    | Jump Ring of LED for 48273                 | 60       |
| 66095    | Wire Clip Cover for 48273                      | 8, 56    | AQ598    | Ventilated Board Connection for 48273         | 34       | AQ617    | Lower Shelf Right Bracket for 48273        | 61       |
| 61244    | Terminal Box for 48273                         | 9        | AQ599    | Honeycomb Panel for 48273                     | 35       | AQ618    | Bottom Board of Cabinet for 48273          | 62       |
| 79359    | Cover of Junction Box for 48273                | 10       | 68423    | Condenser Cover for 48273                     | 36       | AQ619    | Air Inlet Bracket for 48273                | 63       |
| AI124    | Compressor for 48273                           | 11       | AQ601    | Top Cover Board for 48273                     | 37       | AQ620    | Air Inlet Baffle Glass for 48273           | 64       |
| 60594    | Cover of Circuit Board Box for 48273           | 12       | AQ638    | Top Cover for 48273                           | 38       | AQ644    | Air Inlet Cover for 48273                  | 65       |
| 61167    | Circuit Board Box for 48273                    | 13       | AQ639    | Foam of Right Board for 48273                 | 39       | AQ622    | Windshield for 48273                       | 66       |
| 67652    | LED Transformer for 48273                      | 14       | AQ640    | Right Support for Inner Top Board for 48273   | 40       | AQ645    | Windshield Strip for 48273                 | 67       |
| AK999    | LED Power for 48273                            | 15       | 68431    | Right Support Pillar of Shelf for 48273       | 41       | AQ624    | Evaporator Front Plate PE Cotton for 48273 | 68       |
| AO889    | Water Pipe for 48273                           | 16       | AQ641    | Top Cover Pressure Plate for 48273            | 42       | AQ625    | Front Board for Evaporator for 48273       | 69       |
| AL376    | Circlip for 48273                              | 17       | AQ642    | Outer Right Trim Strip for 48273              | 43       | 66351    | Fan Blade for 48273                        | 70       |
| 68407    | Connector of Evaporator Base Panel for 48273   | 18       | AQ643    | Trim Strip Fixed Plate for 48273              | 44       | AG596    | Evaporator Fan Motor 110V for 48273        | 71       |
| 68408    | Support for Upper Cover of Base for 48273      | 19       | AQ604    | Air Pressure Plate for 48273                  | 45       | AQ626    | Evaporator Cover for 48273                 | 72       |
| AQ636    | Foam of Left Side Board for 48273              | 20       | AQ605    | Board Ahead Curtain for 48273                 | 46       | AQ627    | Left Wind Screen of Evaporator for 48273   | 73       |
| AL340    | Left Support of Indoor Roof for 48273          | 21       | AQ606    | Night Curtain Front Panel PE Cotton for 48273 | 47       | AQ628    | Evaporator for 48273                       | 74       |
| 68411    | Left Support Pillar of Shelf for 48273         | 22       | AQ607    | Heater Line for 48273                         | 48       | AQ629    | Right Wind Screen of Evaporator for 48273  | 75       |
| AL313    | Back Strip for Side Glass for 48273            | 23       | AQ608    | Night Curtain for 48273                       | 49       | 71521    | Left Board of Evaporator Cover for 48273   | 76       |
| AL314    | Top/Bottom Strip for Side Glass for 48273      | 24       | AQ609    | Foam of Back Cover for 48273                  | 50       | 61180    | Right Board of Evaporator Cover for 48273  | 77       |
| 68414    | Side Glass for 48273                           | 25       | AQ610    | Ventilated Board for 48273                    | 51       | AQ630    | Connection Pipe for 48273                  | 78       |
| AQ637    | Outer Left Trim Strip for 48273                | 26       | AQ611    | Shelf Accessories for 48273                   | 52       | AQ631    | Base Foam of Evaporator for 48273          | 79       |



# Parts Breakdown

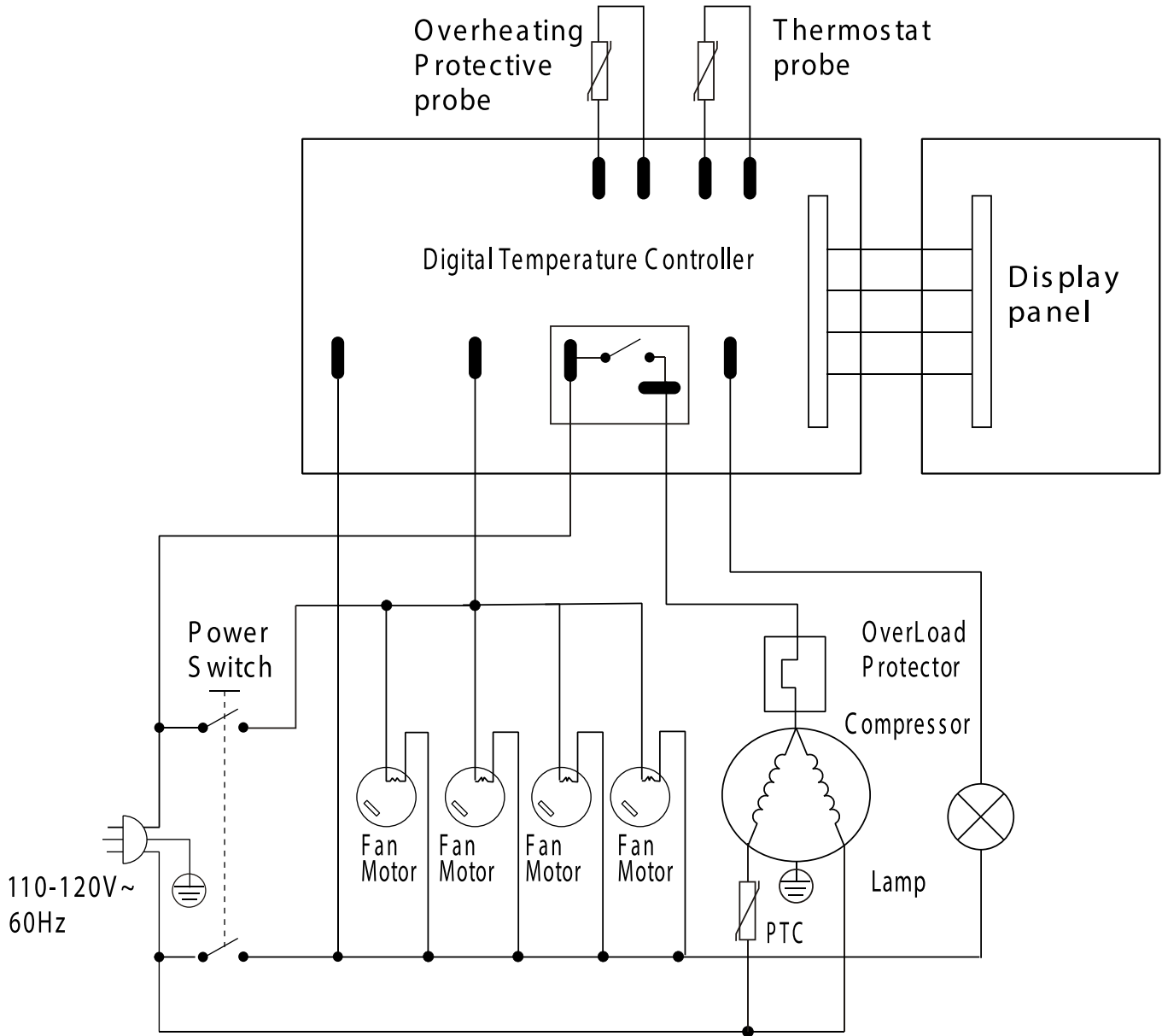
## Model RS-CN-0490-L 48273

| Item No. | Description                          | Position | Item No. | Description                       | Position | Item No. | Description                            | Position |
|----------|--------------------------------------|----------|----------|-----------------------------------|----------|----------|--|----------|
| 71514    | Switch (Green) for 48273             | 80       | 60932    | Fan Guard for 48273               | 87       | 60590    | PVC Trucking for 48273                 | 94       |
| 67648    | Temperature Display for 48273        | 81       | 60933    | Fan Blade for 48273               | 88       | 67642    | Cover of Terminal Box for 48273        | 95       |
| AF546    | Main Circuit Board for 48273         | 82       | AD519    | Flat Net Cover for 48273          | 89       | 67643    | Terminal Box for 48273                 | 96       |
| 60666    | Temperature Probe for 48273          | 83       | 60651    | Curtain Hook for 48273            | 90       | 60668    | Drain Pipe for 48273                   | 97       |
| 68333    | Over-Heating Sensor for 48273        | 84       | AQ646    | Bottom Front Panel for 48273      | 91       | 68398    | Copper Connection for 48273            | 98       |
| AQ632    | Holder for Condenser Motor for 48273 | 85       | AQ647    | Window Shade Components for 48273 | 92       | 60669    | Pressing Plate of Dry Filter for 48273 | 99       |
| AL374    | Evaporator Fan Motor for 48273       | 86       | AC057    | Power Cord for 48273              | 93       |          |  |          |

# Electrical Schematics

**Model RS-CN-0490** 48272

**Model RS-CN-0490-L** 48273



**NEMA**  
 5 - 15P  
 125VAC / 15 AMP



# Warranty Registration

Thank you for purchasing an Omcan product. To register your warranty for this product, complete the information below, tear off the card at the perforation and then send to the address specified below. You can also register online by visiting:

Merci d'avoir acheté un produit Omcan. Pour enregistrer votre garantie pour ce produit, complétez les informations ci-dessous, détachez la carte au niveau de la perforation, puis l'envoyer à l'adresse spécifiée ci-dessous. Vous pouvez également vous inscrire en ligne en visitant:

Gracias por comprar un producto Omcan usted. Para registrar su garantía para este producto, complete la información a continuación, cortar la tarjeta en la perforación y luego enviarlo a la dirección indicada a continuación. También puede registrarse en línea en:

<https://omcan.com/warranty-registration/>

For mailing in Canada

Pour postale au Canada

Por correo en Canadá

**OMCAN**

PRODUCT WARRANTY REGISTRATION

3115 Pepper Mill Court,  
Mississauga, Ontario  
Canada, L5L 4X5

For mailing in the US

Pour diffusion aux États-Unis

Por correo en los EE.UU.

**OMCAN**

PRODUCT WARRANTY REGISTRATION

4450 Witmer Industrial Estates, Unit 4,  
Niagara Falls, New York  
USA, 14305

*or email to: [service@omcan.com](mailto:service@omcan.com)*



Purchaser's Information

Name: \_\_\_\_\_

Address: \_\_\_\_\_

City: \_\_\_\_\_ Province or State: \_\_\_\_\_ Postal or Zip: \_\_\_\_\_

Country: \_\_\_\_\_

Dealer from which Purchased: \_\_\_\_\_

Dealer City: \_\_\_\_\_ Dealer Province or State: \_\_\_\_\_

Invoice: \_\_\_\_\_

Model Name: \_\_\_\_\_ Model Number: \_\_\_\_\_

Machine Description: \_\_\_\_\_

Date of Purchase (MM/DD/YYYY): \_\_\_\_\_

Would you like to extend the warranty?  Yes  No

Company Name: \_\_\_\_\_

Telephone: \_\_\_\_\_

Email Address: \_\_\_\_\_

Type of Company:

Restaurant  Bakery  Deli

Butcher  Supermarket  Caterer

Institution (specify): \_\_\_\_\_

Other (specify): \_\_\_\_\_

Serial Number: \_\_\_\_\_

Date of Installation (MM/DD/YYYY): \_\_\_\_\_

**Thank you for choosing Omcan | Merci d'avoir choisi Omcan | Gracias por elegir Omcan**



Since 1951 Omcan has grown to become a leading distributor of equipment and supplies to the North American food service industry. Our success over these many years can be attributed to our commitment to strengthen and develop new and existing relationships with our valued customers and manufacturers. Today with partners in North America, Europe, Asia and South America, we continually work to improve and grow the company. We strive to offer customers exceptional value through our qualified local sales and service representatives who provide convenient access to over 6,500 globally sourced products.

---

Depuis 1951 Omcan a grandi pour devenir un des "leaders" de la distribution des équipements et matériel pour l'industrie des services alimentaires en Amérique du Nord. Notre succès au cours de ces nombreuses années peut être attribué à notre engagement à renforcer et à développer de nouvelles et existantes relations avec nos clients et les fabricants de valeur. Aujourd'hui avec des partenaires en Amérique du Nord, Europe, Asie et Amérique du Sud, nous travaillons continuellement à améliorer et développer l'entreprise. Nous nous efforçons d'offrir à nos clients une valeur exceptionnelle grâce à nos ventes locales qualifiées et des représentants de service qui offrent un accès facile à plus de 6500 produits provenant du monde entier.

---

Desde 1951 Omcan ha crecido hasta convertirse en un líder en la distribución de equipos y suministros de alimentos en América del Norte industria de servicios. Nuestro éxito en estos años se puede atribuir a nuestro compromiso de fortalecer y desarrollar nuevas relaciones existentes con nuestros valiosos clientes y fabricantes. Hoy con socios de América del Norte, Europa, Asia y América del Sur, que trabajan continuamente para mejorar y crecer la empresa. Nos esforzamos por ofrecer a nuestros clientes valor excepcional a través de nuestro local de ventas y representantes de los servicios que proporcionan un fácil acceso a más de 6,500 productos con origen a nivel mundial.

