



## ***Refrigerated Merchandisers***

Models RE-CN-29R-HC, 54R-HC, 79R-HC

Items 50123, 50124, 50125

## ***Instruction Manual***



*Revised - 06/22/2026*



Toll Free: 1-800-465-0234  
Fax: 905-607-0234  
Email: [service@omcan.com](mailto:service@omcan.com)  
[www.omcan.com](http://www.omcan.com)



# ***Table of Contents***

Model RE-CN-29R-HC / Model RE-CN-54R-HC / Model RE-CN-79R-HC

---

<b>Section</b>	<b>Page</b>
Disclaimer -----	3
General Information -----	4 - 5
Safety and Warranty -----	5 - 7
Technical Specifications -----	8
Installation -----	9
Operation -----	9
Troubleshooting -----	9 - 10
Parts Breakdown -----	11 - 16
Electrical Schematics -----	17 - 19
Notes -----	20 - 22
Warranty Registration -----	23

*OMCAN IS NOT RESPONSIBLE FOR ANY DAMAGES DUE TO WATER LEAKS. WARRANTY FOR WATER LEAKS IS VOID IF THE AMBIENT ROOM TEMPERATURE EXCEEDS 75°F AND 55% RELATIVE HUMIDITY, AND THE APPLIANCE DRAIN IS NOT CONNECTED DIRECTLY TO A FLOOR DRAIN.*

---

*OMCAN N'EST PAS RESPONSABLE DES DOMMAGES DUS AUX FUITES D'EAU. LA GARANTIE POUR LES FUITES D'EAU EST ANNULÉE SI LA TEMPÉRATURE AMBIANTE DE LA PIÈCE DÉPASSE 75°F ET 55% D'HUMIDITÉ RELATIVE, ET SI LE DRAIN DE L'APPAREIL N'EST PAS RACCORDÉ DIRECTEMENT À UN DRAIN DE PLANCHER.*

---

*OMCAN NO SE HACE RESPONSABLE DE LOS DAÑOS CAUSADOS POR FUGAS DE AGUA. LA GARANTÍA POR FUGAS DE AGUA QUEDA ANULADA SI LA TEMPERATURA AMBIENTE SUPERA LOS 75°F Y EL 55% DE HUMEDAD RELATIVA, Y EL DESAGÜE DEL APARATO NO ESTÁ CONECTADO DIRECTAMENTE A UN DESAGÜE DE PISO.*

## ***General Information***

---

**Omcan Manufacturing and Distributing Company Inc., Food Machinery of America, Inc. dba Omcan and Omcan Inc. are not responsible for any harm or injury caused due to any person's improper or negligent use of this equipment. The product shall only be operated by someone over the age of 18, of sound mind, and not under the influence of any drugs or alcohol, who has been trained in the correct operation of this machine, and is wearing authorized, proper safety clothing. Any modification to the machine voids any warranty, and may cause harm to individuals using the machine or in the vicinity of the machine while in operation.**

### **CHECK PACKAGE UPON ARRIVAL**

Upon receipt of an Omcan shipment please inspect for external damage. If no damage is evident on the external packaging, open carton to ensure all ordered items are within the box, and there is no concealed damage to the machine. If the package has suffered rough handling, bumps or damage (visible or concealed), please note it on the bill of lading before accepting the delivery and contact Omcan within 24 hours, so we may initiate a claim with the carrier. A detailed report on the extent of the damage caused to the machine must be filled out within three days, from the delivery date shown in the shipping documents. Omcan has no recourse for damaged products that were shipped collect or third party.

**Before operating any equipment, always read and familiarize yourself with all operation and safety instructions.**

**Omcan would like to thank you for purchasing this machine. It's of the utmost importance to save these instructions for future reference. Also save the original box and packaging for shipping the equipment if servicing or returning of the machine is required.**

---

**Omcan Fabrication et distribution Compagnie Limitée et Food Machinery d'Amérique, dba Omcan et Omcan Inc. ne sont pas responsables de tout dommage ou blessure causé du fait que toute personne ait utilisé cet équipement de façon irrégulière. Le produit ne doit être exploité que par quelqu'un de plus de 18 ans, sain d'esprit, et pas sous l'influence d'une drogue ou d'alcool, qui a été formé pour utiliser cette machine correctement, et est vêtu de vêtements de sécurité appropriés. Toute modification de la machine annule toute garantie, et peut causer un préjudice à des personnes utilisant la machine ou des personnes à proximité de la machine pendant son fonctionnement.**

### **VÉRIFIEZ LE COLIS DÈS RÉCEPTION**

Dès réception d'une expédition d'Omcan veuillez inspecter pour dommages externes. Si aucun dommage n'est visible sur l'emballage externe, ouvrez le carton afin de s'assurer que tous les éléments commandés sont dans la boîte, et il n'y a aucun dommage dissimulé à la machine. Si le colis n'a subi aucune mauvaises manipulations, de bosses ou de dommages (visible ou cachée), notez-le sur le bond de livraison avant d'accepter la livraison et contactez Omcan dans les 24 heures qui suivent, pour que nous puissions engager une réclamation auprès du transporteur. Un rapport détaillé sur l'étendue des dommages causés à la machine doit être rempli dans un délai de trois jours, à compter de la date de livraison indiquée dans les documents d'expédition. Omcan n'a aucun droit de recours pour les produits endommagés qui ont été expédiés ou cueillis par un tiers transporteur.

**Avant d'utiliser n'importe quel équipement, toujours lire et vous familiariser avec toutes les opérations et les**

## ***General Information***

---

consignes de sécurité.

Omcan voudrais vous remercier d'avoir choisi cette machine. Il est primordial de conserver ces instructions pour une référence ultérieure. Également conservez la boîte originale et l'emballage pour l'expédition de l'équipement si l'entretien ou le retour de la machine est nécessaire.

---

Omcan Empresa De Fabricacion Y Distribucion Inc. Y Maquinaria De Alimentos De America, Inc. dba Omcan y Omcan Inc. no son responsables de ningun daño o perjuicio causado por cualquier persona inadecuada o el uso descuidado de este equipo. El producto solo podra ser operado por una persona mayor de 18 años, en su sano juicio y no bajo alguna influencia de droga o alcohol, y que este ha sido entrenado en el correcto funcionamiento de esta máquina, y ésta usando ropa apropiada y autorizada. Cualquier modificación a la máquina anula la garantía y puede causar daños a las personas usando la máquina mientras esta en el funcionamiento.

### **REVISE EL PAQUETE A SU LLEGADA**

Tras la recepcion de un envio Omcan favor inspeccionar daños externos. Si no hay daños evidentes en el empaque exterior, Habra el carton para asegurarse que todos los articulos solicitados estén dentro de la caja y no encuentre daños ocultos en la máquina. Si el paquete ha sufrido un manejo de poco cuidado, golpes o daños (visible o oculto) por favor anote en la factura antes de aceptar la entrega y contacte Omcan dentro de las 24 horas, de modo que podamos iniciar una reclamación con la compañía. Un informe detallado sobre los daños causados a la máquina debe ser llenado en el plazo de tres días, desde la fecha de entrega que se muestra en los documentos de envío. Omcan no tiene ningun recurso por productos dañados que se enviaron a recoger por terceros.

**Antes de utilizar cualquier equipo, siempre lea y familiarizarse con todas las instrucciones de funcionamiento y seguridad.**

Omcan le gustaría darle las gracias por la compra de esta máquina. Es de la mayor importancia para salvar estas instrucciones para futuras consultas. Además, guarda la caja original y el embalaje para el envío del equipo si servicio técnico o devolución de la máquina que se requiere.

## ***Safety and Warranty***

---

- To minimize shock and fire hazards, be sure not to overload the outlet.
- To minimize electric shock and malfunction, do not spray the unit with water.
- To minimize fire hazards, do not use flammable spray products near the unit.
- After unplugging the unit, wait at least 6 minutes before re-plugging it. It may cause compressor failure if plugged in before 6 minutes waiting period.
- Cautions for cleaning:
  - Unplug the power cord before cleaning.
  - Do not unplug/plug the power cord with wet hands.

## ***Safety and Warranty***

---

- Do not use an abrasive cleaners, solvents or polishing agents on plastic parts. Doing so might cause cracking or discoloring.
- When it is not in use:
  - Unplug the power cord.
  - Wipe inside with dry cloth, and you may leave the door slightly open to eliminate moisture and odor.

### **CAUTION FOR SAFETY**

1. Leave enough space from the wall to the cabinet and the ceiling; do not be sealed completely in the back part of the cabinet, prepare an air vent to the outside.  
**Caution: it needs more than 20 cm from the cabinet to wall.**
2. Please move away all out-package for bottom heat radiation to avoid fire.
3. It's prohibited to store flammable and volatile chemical, or leading to exploding.
4. Individual single-phase socket must be used. It should be reliably connected to a grounding wire.  
**Caution: do not connect grounding wire to a water or gas pipe.**
5. Do not be hard collided or fiercely vibrated when in transportation; it is not larger than 45° for the inclination of the cabinet.
6. Please refer to the trouble shooting references when the unit is facing some problems. Do no attempt to solve the problem on your own, please refer to certified technician only.

**DANGER-Risk of fire or explosion. Flammable refrigerant used. Do not use mechanical devices to defrost refrigerator. Do not puncture refrigerant tubing.**

**DANGER-Risk of fire or explosion. Flammable refrigerant used. To be repaired only by trained service personnel. Do not puncture refrigerant tubing.**

**CAUTION-Risk of fire or explosion. Flammable refrigerant used. Consult repair manual/owner's guide before attempting to service this product. All safety precautions must be followed.**

**CAUTION-Risk of fire or explosion. Dispose of properly in accordance with federal or local regulations. Flammable refrigerant used.**

**CAUTION-Risk of fire or explosion due to puncture of refrigerant tubing; follow handling instructions carefully. Flammable refrigerant used.**

**CAUTION-Keep clear of obstruction all ventilation openings in the appliance enclosure or in the structure for building-in.**

**CAUTION-servicing shall be done by factory authorized service personnel, so as to minimize the risk of possible ignition due to incorrect parts or improper service.**

**RESIDENTIAL USERS: vendor assumes no liability for parts or labor coverage for component failure or other damages resulting from installation in non-commercial or residential applications. The right is reserved to deny shipment for residential usage; if this occurs, you will be notified as soon as possible.**

**2 YEARS PARTS AND LABOUR / 5 YEARS PARTS ONLY ON COMPRESSOR WARRANTY**



## ***Safety and Warranty***

---

Within the warranty period, contact Omcan Inc. at 1-800-465-0234 to schedule an Omcan authorized service technician to repair the equipment locally.

Unauthorized maintenance will void the warranty. Warranty covers electrical and part failures, not improper use.

Please see <https://omcan.com/disclaimer> for complete info.

### **WARNING:**

The packaging components are classified as normal solid urban waste and can therefore be disposed of without difficulty.

In any case, for suitable recycling, we suggest disposing of the products separately (differentiated waste) according to the current norms.

**DO NOT DISCARD ANY PACKAGING MATERIALS IN THE ENVIRONMENT!**

# Technical Specifications

Model	RE-CN-29R-HC	RE-CN-54R-HC	RE-CN-79R-HC
Item Number	50123	50124	50125
Temperature Range	0.6 - 4.4°C / 33 - 40°F		
Max Ambient Temp Rating	24°C / 75°F		
Power	335 W	430 W	625 W
Refrigerant	R290		
Isolation Material	Cyclopentane		
Cooling System	Ventilated		
Defrosting	Automatic		
Type of Controller	Digital		
Self-Closing Door	Yes		
Current	3.4A	4.5A	6.9A
Number of Doors	1	2	3
Number of Shelves	4	8	12
Shelf Material	Plastic Coated		
Shelf Loading Capacity	88 lbs. / 39.9 kgs.		
Electrical	110-120V / 60Hz / 1		
Interior Dimensions	25" x 22" x 58.9" 634 x 560 x 1495mm	49.4" x 23.6" x 58.9" 1254 x 600 x 1495mm	74.2" x 26.4" x 58.9" 1884 x 670 x 1495mm
Net Dimensions	29.5" x 26.4" x 82.2" 750 x 670 x 2088mm	53.9" x 28" x 82.2" 1370 x 710 x 2088mm	78.7" x 30.7" x 82.2" 2000 x 780 x 2088mm
Packaging Dimensions	32.3" x 30.1" x 84.6" 820 x 765 x 2150mm	56.7" x 31.7" x 84.6" 1440 x 805 x 2150mm	81.5" x 34.4" x 84.6" 2070 x 875 x 2150mm
Net Volume	461.6 L / 16.3 cu.ft.	1005.2 L / 35.5 cu.ft.	1684.9 L / 59.5 cu.ft.
Net Weight	242 lbs. / 109.8 kgs.	374 lbs. / 169.6 kgs.	550 lbs. / 249.5 kgs.
Packaging Weight	268.4 lbs. / 121.7 kgs.	413.6 lbs. / 187.6 kgs.	609.4 lbs. / 276.4 kgs.

## Installation

---

- The refrigeration system operates most efficiently when installed in an area with cool, dry air circulation.
- There must be at least 6 inches of clearance on both sides and the back of the cabinet.
- Select a location away from the heat and moisture generating equipment such as stoves, ovens, etc.
- Avoid direct sun rays.
- Be sure that the floor where you intend to install the unit is strong and level enough to support the total weight of the unit and its contents.
- To minimize shock and fire hazards, be sure that the unit is properly grounded. For your safety and protection, all units are equipped with a special three-prong grounding plug on the service cord.
- All units are designed for indoor use. Outdoor use may cause significant damage to the unit.

## Operation

---

### WHEN LOADING THE UNIT:

- Be careful not to block the air duct located at the back and the fan on the ceiling of the unit with contents.
  - Blocking the air flow may cause decrease in performance.
  - For the best performance, maintain at least 4 inches of clearance between the contents and the air duct.
- Set the shelves that comes with the unit to fit your needs.

### TEMPERATURE CONTROLLER:

- The controller is located at the right, front corner of the ceiling.
- Temperature is set as "4" at default.

Do not leave the unit door open for long period of time. For the most efficient operation, close the door immediately after the use.

## Troubleshooting

---

Please note that the following trouble shooting table can only as a reference for solutions to common problems.

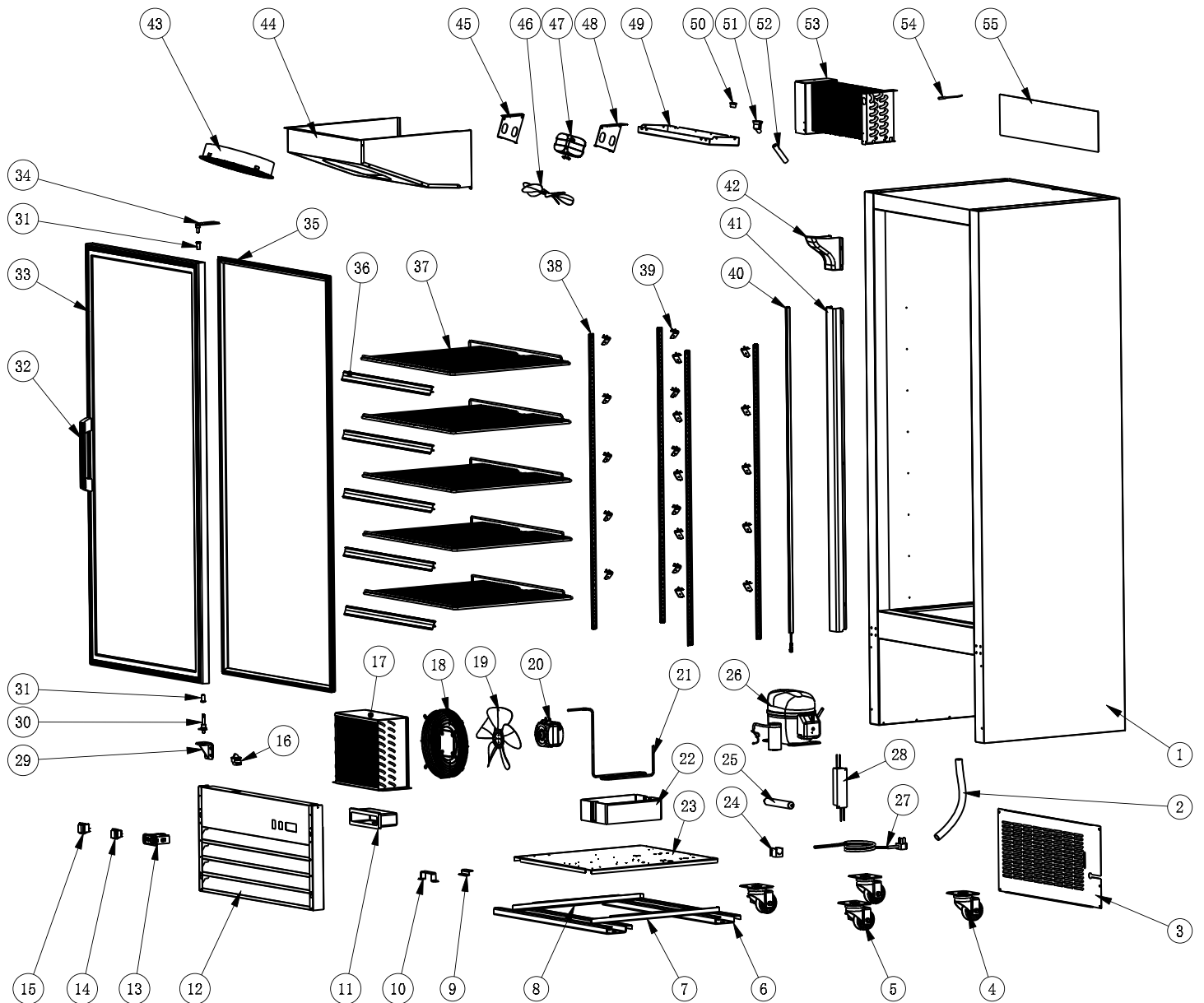
PROBLEM	POSSIBLE SOLUTIONS
Compressor will not start.	Check if the power cord has been plugged in.
	Check for blown fuse.

# Troubleshooting

Poor performance.	Move the unit from direct sun light, and avoid installing heating devices near the unit.
	Install the unit in a well ventilated place with minimum of 6" clearance in the back.
	Check the condenser, and clean if heavy dust is collected.
	Check to see if contents are blocking the air duct.
	Check the temperature controller for possible incorrect temperature setting.
	Check to see if refrigerant charge is low.
	Make sure the door is completely closed.
No interior light.	Turn off the light switch and turn it on again.
	Make sure the bulb is correctly inserted into the sockets.
	Check the bulb, and replace it if blown.
Unit noisy.	Make sure to install the unit on level surface.
	Make sure to maintain the minimum clearance of 6" from the wall.
	Check for the loose parts or mounting.
	Make sure the tubing is free from any contact to avoid tubing rattle.
Condensation on cabinet and/or floor.	Reduce the relative humidity in the area where the unit is installed.
	Gasket on door or head section is not sealing properly. Repair or replace gasket as necessary.

# Parts Breakdown

Model RE-CN-29R-HC 50123



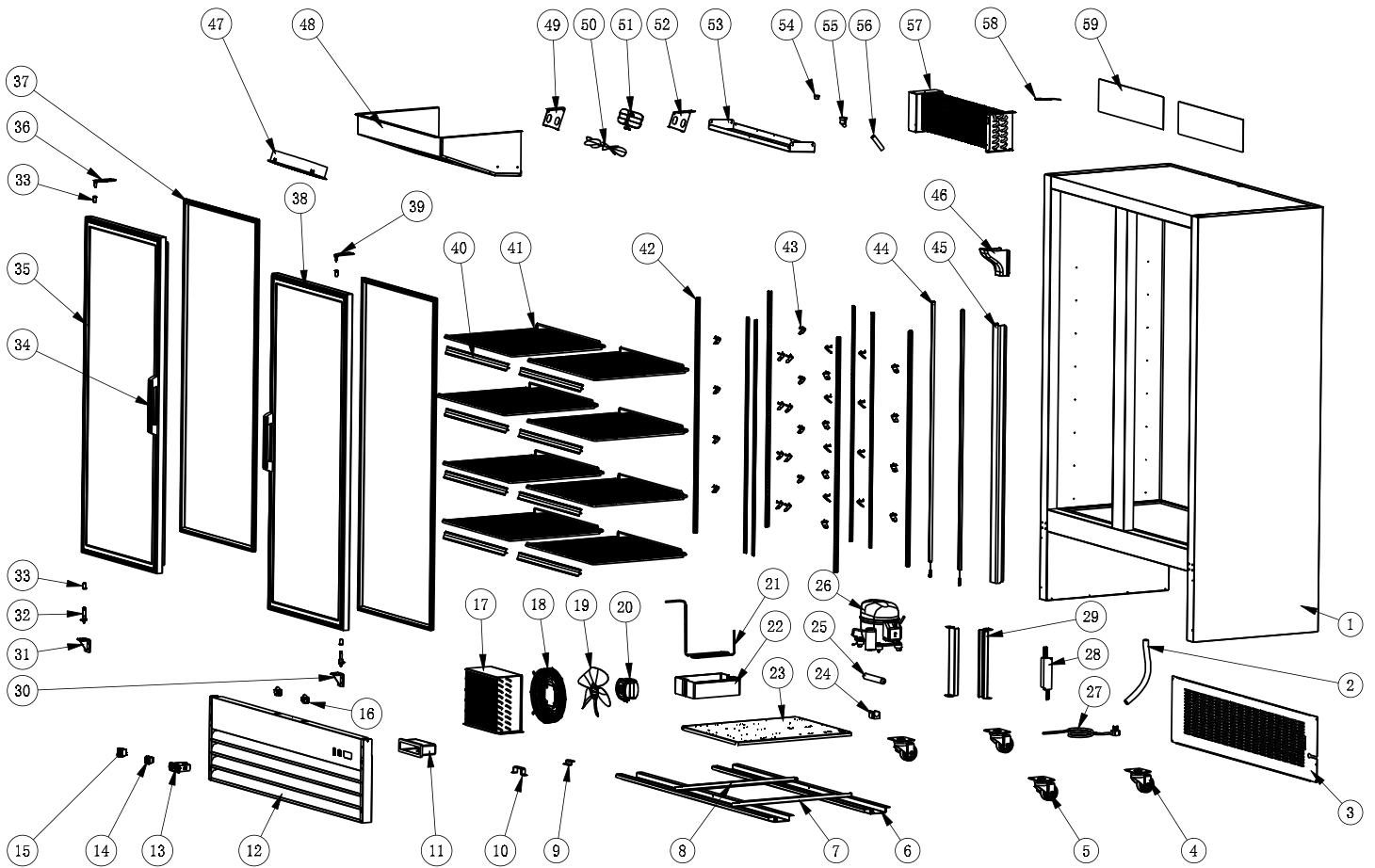
# Parts Breakdown

## Model RE-CN-29R-HC 50123

Item No.	Description	Position	Item No.	Description	Position	Item No.	Description	Position
AU263	Drain Pipe Component for 50123	2	AL932	Condenser Fan Motor for 50123	20	AN127	K Strip for 50123	38
AU264	Back Grill for 50123	3	AU274	High Pressure Hose (Self-Made) for 50123	21	AU282	K Clip for 50123	39
AU265	3" Caster without Break for 50123	4	AA874	Outer Drain Pan for 50123	22	AG461	LED Light for 50123	40
AU266	3" Caster with Break for 50123	5	AU275	Compressor Unit Installation Board for 50123	23	AU283	Air Pipe Protection Board for 50123	41
AU267	Castor Supporter for 50123	6	AI969	Filter Fixer for 50123	24	AU284	Drain Pipe Block for 50123	42
AU268	Right Track for Installation Board for 50123	7	AI968	Filter for 50123	25	AH713	Evaporator Fan Motor Cover for 50123	43
AU269	Left Track for Installation Board for 50123	8	AU276	Compressor for 50123	26	AU285	Evaporator Cover for 50123	44
AU270	Installation Board Block for 50123	9	AA135	Power Cord for 50123	27	AU286	Left Evaporator Fan Fixer for 50123	45
AU271	Installation Board Handle for 50123	10	AU277	Power Switch for 50123	28	AA764	Condenser/Evaporator Fan Motor Blade for 50123	46
AI385	Waterproof Cover of Thermostat for 50123	11	AA807	Hinge R for 50123	29	AH702	Evaporator Fan Motor for 50123	47
AU272	Grill Component for 50123	12	AA810	Bottom Hinge Axis for 50123	30	AU287	Right Evaporator Fan Fixer for 50123	48
AU273	Thermostat for 50123	13	AA715	Axis Cover for 50123	31	AG446	Inner Drain Pan for 50123	49
AA362	LED Light Switch for 50123	14	AA695	Glass Door Handle for 50123	32	AT250	Elbow Pipe (Screw) Nut for 50123	50
AA124	Power Switch for 50123	15	AU278	Glass Door for 50123	33	AF036	Elbow Pipe for 50123	51
AA844	Door Switch for 50123	16	AU279	Right Upper Hinge for 50123	34	AA969	Drain Hose for 50123	52
AS737	Condenser after April 2022 for 50123	17	AU280	Door Gasket for 50123	35	AU288	Evaporator for 50123	53
AI960	Condenser Fan Cover for 50123	18	AA748	Shelf Tag for 50123	36	AI382	Temperature Probe for 50123	54
AA962	Blade of Evaporator Fan Motor for 50123	19	AU281	Shelf for 50123	37	AU289	Door Sticker for 50123	55

# Parts Breakdown

## Model RE-CN-54R-HC 50124



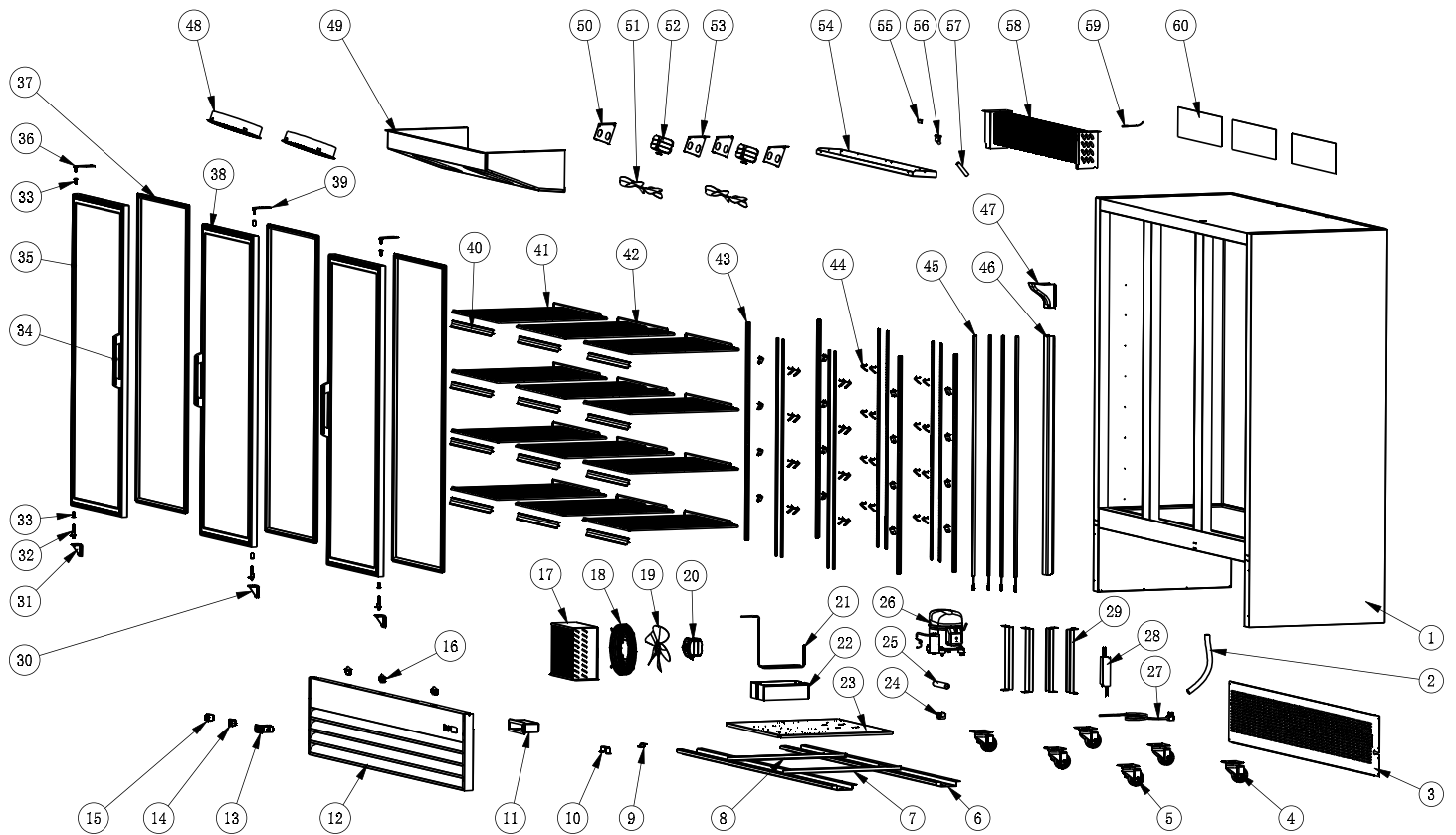
# Parts Breakdown

## Model RE-CN-54R-HC 50124

Item No.	Description	Position	Item No.	Description	Position	Item No.	Description	Position
AU263	Drain Pipe Component for 50124	2	AU274	High Pressure Pipe for 50124	21	AA777	Shelf Tag for 50124	40
AU300	Back Grill for 50124	3	AA874	Outer Drain Pan for 50124	22	AU313	Shelf for 50124	41
AU265	3" Caster without Break for 50124	4	AU305	Compressor Installation Board for 50124	23	AN127	K Strip for 50124	42
AU266	3" Caster with Break for 50124	5	AI969	Filter Fixer for 50124	24	AU282	K Clip for 50124	43
AU301	Caster Supporter for 50124	6	AI968	Filter for 50124	25	AG461	LED Light for 50124	44
AU302	Right Track for Installation Board for 50124	7	AU306	Compressor for 50124	26	AU283	Air Pipe Protection Board for 50124	45
AU303	Left Track for Installation Board for 50124	8	AA135	Power Cord for 50124	27	AU284	Drain Pipe Block for 50124	46
AU270	Installation Board Block for 50124	9	AU307	Power Switch for 50124	28	AU314	Evaporator Fan Motor Cover for 50124	47
AU271	Installation Board Handle for 50124	10	AU308	Support Board for 50124	29	AU315	Evaporator Cover for 50124	48
AI385	Waterproof Cover of Thermostat for 50124	11	AA807	Hinge R for 50124	30	AU286	Left Evaporator Fan Fixer for 50124	49
AU304	Front Grille for 50124	12	AA808	Hinge P for 50124	31	AH702	Evaporator Fan Motor for 50124	51
AU273	Thermostat for 50124	13	AA810	Bottom Hinge Axis for 50124	32	AU287	Right Evaporator Fan Fixer for 50124	52
AA362	LED Light Switch for 50124	14	AA715	Axis Cover for 50124	33	AG552	Inner Drain Pan for 50124	53
AA124	Power Switch for 50124	15	AA695	Glass Door Handle for 50124	34	AT250	Elbow Pipe (Screw) Nut for 50124	54
AA844	Door Switch for 50124	16	AU309	Glass Door for 50124	35	AF036	Elbow Pipe for 50124	55
AS665	Condenser for 50124	17	AU310	Left Upper Hinge for 50124	36	AA969	Drain Hose for 50124	56
AL996	Condenser Fan Cover for 50124	18	AU311	Door Gasket for 50124	37	AT426	Evaporator for 50124	57
AA764	Condenser/Evaporator Fan Motor Blade for 50124	19, 50	AU312	Glass Door for 50124	38	AI382	Temperature Probe for 50124	58
26675	Condenser Fan for 50124	20	AU279	Right Upper Hinge for 50124	39	AU316	Door Sticker for 50124	59

# Parts Breakdown

**Model RE-CN-79R-HC 50125**



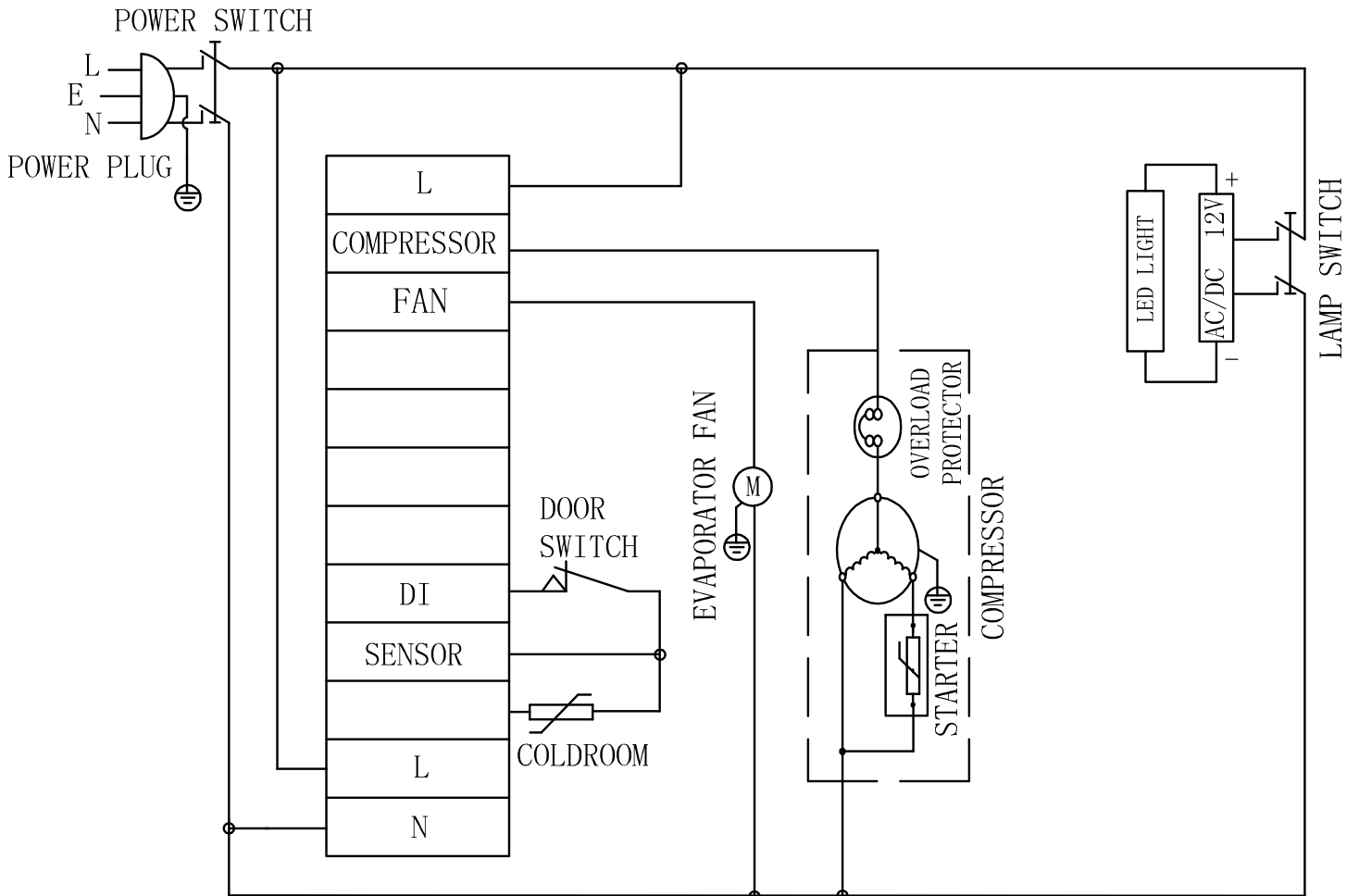
# Parts Breakdown

## Model RE-CN-79R-HC 50125

Item No.	Description	Position	Item No.	Description	Position	Item No.	Description	Position
AU263	Drain Pipe Component for 50125	2	AB970	Outer Drain Pan for 50125	22	AU328	Shelf for 50125	42
AU317	Back Grill for 50125	3	AU322	Compressor Installation Board for 50125	23	AN127	K Strip for 50125	43
AU265	3" Caster without Break for 50125	4	AI969	Filter Fixer for 50125	24	AU282	K Clip for 50125	44
AU266	3" Caster with Break for 50125	5	AI968	Filter for 50125	25	AG461	LED Light for 50125	45
AU318	Caster Supporter for 50125	6	AU323	Compressor for 50125	26	AU283	Air Pipe Protection Board for 50125	46
AU302	Right Track for Installation Board for 50125	7	AA805	Power Cord for 50125	27	AU284	Drain Pipe Block for 50125	47
AU303	Left Track for Installation Board for 50125	8	AU307	Power Switch for 50125	28	AH713	Evaporator Fan Motor Cover for 50125	48
AU270	Installation Board Block for 50125	9	AU308	Support Board for 50125	29	AU329	Evaporator Cover for 50125	49
AU271	Installation Board Handle for 50125	10	AA807	Hinge R for 50125	30	AU286	Left Evaporator Fan Fixer for 50125	50
AI385	Waterproof Cover of Thermostat for 50125	11	AA808	Hinge P for 50125	31	AA764	Condenser/Evaporator Fan Motor Blade for 50125	51
AU319	Front Grille for 50125	12	AA810	Bottom Hinge Axis for 50125	32	AH702	Evaporator Fan Motor for 50125	52
AU273	Thermostat for 50125	13	AA715	Axis Cover for 50125	33	AU287	Right Evaporator Fan Fixer for 50125	53
AA362	LED Light Switch for 50125	14	AA695	Glass Door Handle for 50125	34	AH703	Evaporator Drain Pan for 50125	54
AA124	Power Switch for 50125	15	AU324	Glass Door for 50125	35	AT250	Elbow Pipe (Screw) Nut for 50125	55
AA844	Door Switch for 50125	16	AU310	Left Upper Hinge for 50125	36	AF036	Elbow Pipe for 50125	56
AH690	Condenser for 50125	17	AU325	Door Gasket for 50125	37	AA969	Drain Hose for 50125	57
AU320	Condenser Fan Motor Cover for 50125	18	AU326	Glass Door for 50125	38	AU330	Evaporator for 50125	58
AA814	Condenser Fan Motor Blade for 50125	19	AU279	Right Upper Hinge for 50125	39	AI382	Temperature Probe for 50125	59
AA813	Condenser Fan Motor for 50125	20	AA725	Shelf Tag for 50125	40	AU331	Door Sticker for 50125	60
AU321	High Pressure Pipe for 50125	21	AU327	Shelf for 50125	41			

# Electrical Schematics

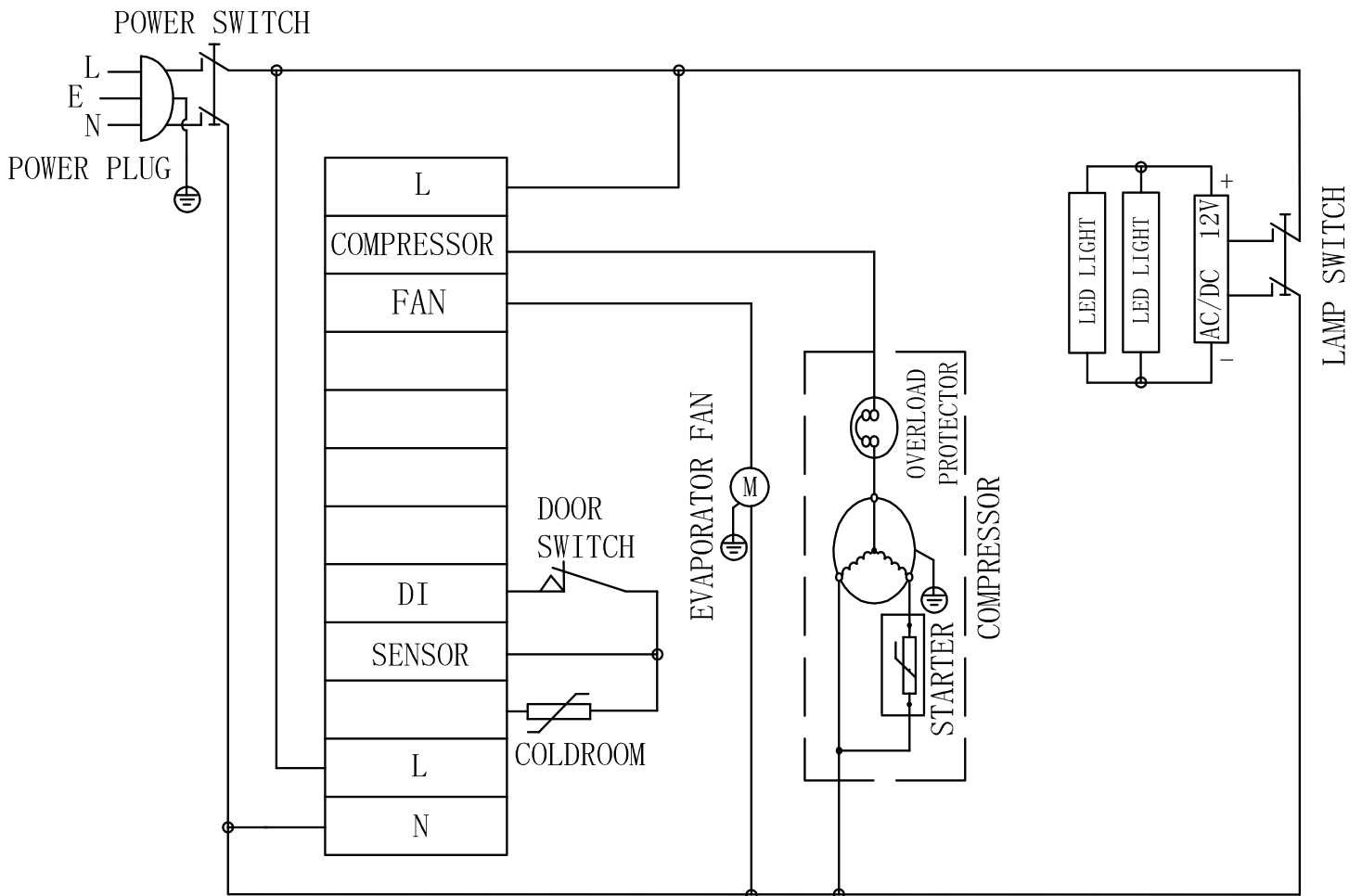
## Model RE-CN-29R-HC 50123



**NEMA**  
 5 - 15P  
 125VAC / 15 AMP

# Electrical Schematics

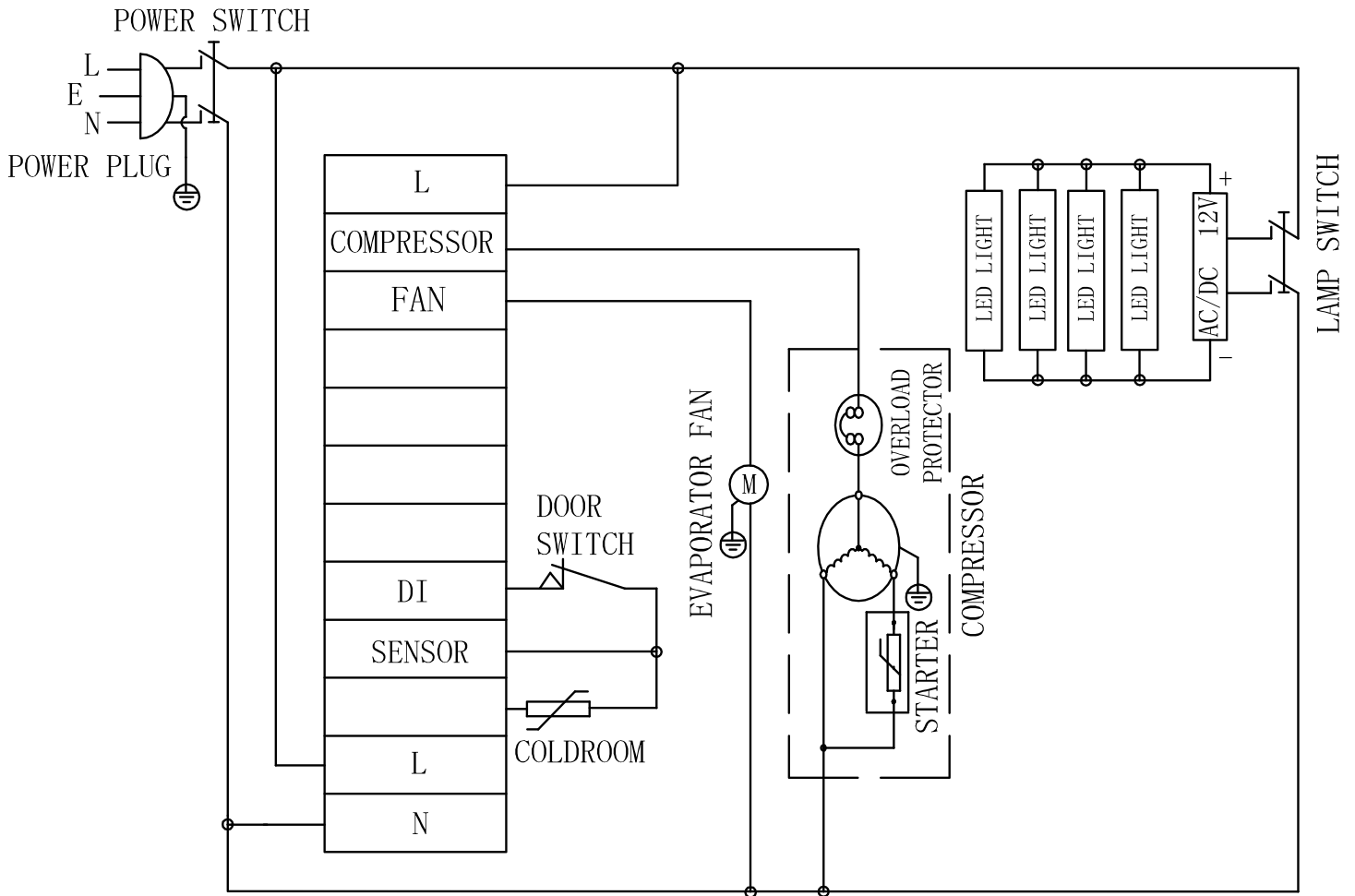
**Model RE-CN-54R-HC** 50124



**NEMA**  
5 - 15P  
125VAC / 15 AMP

# Electrical Schematics

## Model RE-CN-79R-HC 50125



**NEMA**  
 5 - 15P  
 125VAC / 15 AMP









# Warranty Registration

Thank you for purchasing an Omcan product. To register your warranty for this product, complete the information below, tear off the card at the perforation and then send to the address specified below. You can also register online by visiting:

Merci d'avoir acheté un produit Omcan. Pour enregistrer votre garantie pour ce produit, complétez les informations ci-dessous, détachez la carte au niveau de la perforation, puis l'envoyer à l'adresse spécifiée ci-dessous. Vous pouvez également vous inscrire en ligne en visitant:

Gracias por comprar un producto Omcan usted. Para registrar su garantía para este producto, complete la información a continuación, cortar la tarjeta en la perforación y luego enviarlo a la dirección indicada a continuación. También puede registrarse en línea en:

<https://omcan.com/warranty-registration/>

For mailing in Canada

Pour postale au Canada

Por correo en Canadá

For mailing in the US

Pour diffusion aux États-Unis

Por correo en los EE.UU.

**OMCAN**

PRODUCT WARRANTY REGISTRATION

3115 Pepper Mill Court,  
Mississauga, Ontario  
Canada, L5L 4X5

**OMCAN**

PRODUCT WARRANTY REGISTRATION

4450 Witmer Industrial Estates, Unit 4,  
Niagara Falls, New York  
USA, 14305

*or email to: [service@omcan.com](mailto:service@omcan.com)*



Purchaser's Information

Name: \_\_\_\_\_

Address: \_\_\_\_\_

City: \_\_\_\_\_ Province or State: \_\_\_\_\_ Postal or Zip: \_\_\_\_\_

Country: \_\_\_\_\_

Dealer from which Purchased: \_\_\_\_\_

Dealer City: \_\_\_\_\_ Dealer Province or State: \_\_\_\_\_

Invoice: \_\_\_\_\_

Model Name: \_\_\_\_\_ Model Number: \_\_\_\_\_

Machine Description: \_\_\_\_\_

Date of Purchase (MM/DD/YYYY): \_\_\_\_\_

Would you like to extend the warranty?  Yes  No

Company Name: \_\_\_\_\_

Telephone: \_\_\_\_\_

Email Address: \_\_\_\_\_

Type of Company:

Restaurant  Bakery  Deli

Butcher  Supermarket  Caterer

Institution (specify): \_\_\_\_\_

Other (specify): \_\_\_\_\_

Serial Number: \_\_\_\_\_

Date of Installation (MM/DD/YYYY): \_\_\_\_\_

**Thank you for choosing Omcan | Merci d'avoir choisi Omcan | Gracias por elegir Omcan**



Since 1951 Omcan has grown to become a leading distributor of equipment and supplies to the North American food service industry. Our success over these many years can be attributed to our commitment to strengthen and develop new and existing relationships with our valued customers and manufacturers. Today with partners in North America, Europe, Asia and South America, we continually work to improve and grow the company. We strive to offer customers exceptional value through our qualified local sales and service representatives who provide convenient access to over 6,500 globally sourced products.

---

Depuis 1951 Omcan a grandi pour devenir un des "leaders" de la distribution des équipements et matériel pour l'industrie des services alimentaires en Amérique du Nord. Notre succès au cours de ces nombreuses années peut être attribué à notre engagement à renforcer et à développer de nouvelles et existantes relations avec nos clients et les fabricants de valeur. Aujourd'hui avec des partenaires en Amérique du Nord, Europe, Asie et Amérique du Sud, nous travaillons continuellement à améliorer et développer l'entreprise. Nous nous efforçons d'offrir à nos clients une valeur exceptionnelle grâce à nos ventes locales qualifiées et des représentants de service qui offrent un accès facile à plus de 6500 produits provenant du monde entier.

---

Desde 1951 Omcan ha crecido hasta convertirse en un líder en la distribución de equipos y suministros de alimentos en América del Norte industria de servicios. Nuestro éxito en estos años se puede atribuir a nuestro compromiso de fortalecer y desarrollar nuevas relaciones existentes con nuestros valiosos clientes y fabricantes. Hoy con socios de América del Norte, Europa, Asia y América del Sur, que trabajan continuamente para mejorar y crecer la empresa. Nos esforzamos por ofrecer a nuestros clientes valor excepcional a través de nuestro local de ventas y representantes de los servicios que proporcionan un fácil acceso a más de 6,500 productos con origen a nivel mundial.

