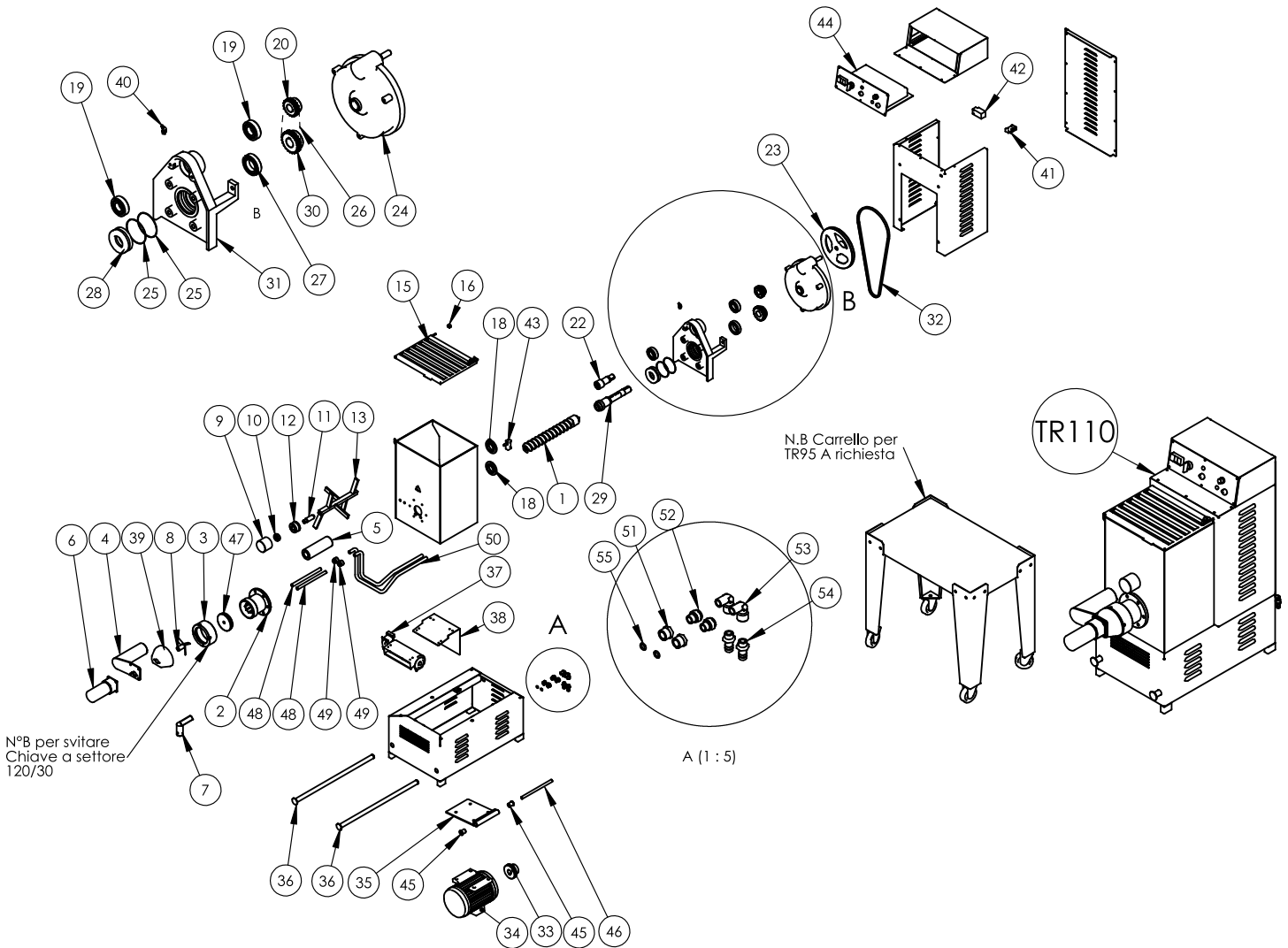


# Parts Breakdown

Model PM-IT-0025 16643



# Parts Breakdown

## Model PM-IT-0025 16643

Item No.	Description	Position	Item No.	Description	Position	Item No.	Description	Position
37967	Worm Complete with Propeller for 16643	1	77793	Reducer Pulley for 16643	23	77809	Fattener for 16643	40
77780	Sleeve for 16643	2	77794	Reducer for 16643	24	77810	Micro Switch MS30 for 16643	41
31248	Die Retaining Ring for 16643	3	77795	Spacer for 16643	25	77811	Micro Switch FR515 for 16643	42
14564	Rotating Cutter Sup. Arm for 16643	4	45190	Double Chain 06B-2 3/8" 55 S+J for 16643	26	77812	Micro Switch MS09 for 16643	43
77782	Fixed Support for 16643	5	77797	Bearing 6008 for 16643	27	40205	Complete Electrical System - Board Switches and Panel for 16643	44
14565	Cutter Motor with Plug for 16643	6	77798	Bearing 51308 for 16643	28	77814	Bushing for 16643	45
16280	Cutter Blade Single for 16643	7	77799	Mixer Lower Shaft for 16643	29	77815	Shaft Motor Base for 16643	46
77784	Cutter Blade 3-Blade for 16643	8	77800	Lower Pinion Z=23 3/8" for 16643	30	77816	Nylon Cup for 16643	47
10901	Rotating Mixer Support with Bearing and Shaft for 16643	9, 10, 11	77801	Rear Support Plate + /S -for 16643	31	77817	1/4 Tubes for 16643	48
77835	Fixed Support for 16643	12	77802	Belt 1180 for 16643	32	77818	Nipple Fittings for 16643	49
39487	Mixer for 16643	13	77803	Motor Pulley for 16643	33	77819	3/8 Flexible Tube for 16643	50
77788	Cover for 16643	15	39081	Motor 90L B3/BL SX 220V 60Hz 1ph 1,5kW for 16643	34	77820	Fittings for 16643	51
39623	Cam for 16643	16	77804	Motor Base for 16643	35	77821	Reducer for 16643	52
77789	Upper Wheel for 16643	18	77805	Sieve Support Rods for 16643	36	77822	1/4 Elbows for 16643	53
77843	Bearing 6206 2RS for 16643	19	77806	Fan for 16643	37	77823	Hose for 16643	54
77791	Upper Sprocket Z=22 3/8 for 16643	20	77807	Fan Base for 16643	38	77824	1/4 Gasket for 16643	55
77792	Upper Mixer Shaft for 16643	22	77808	Knife Shelf Protection for 16643	39			