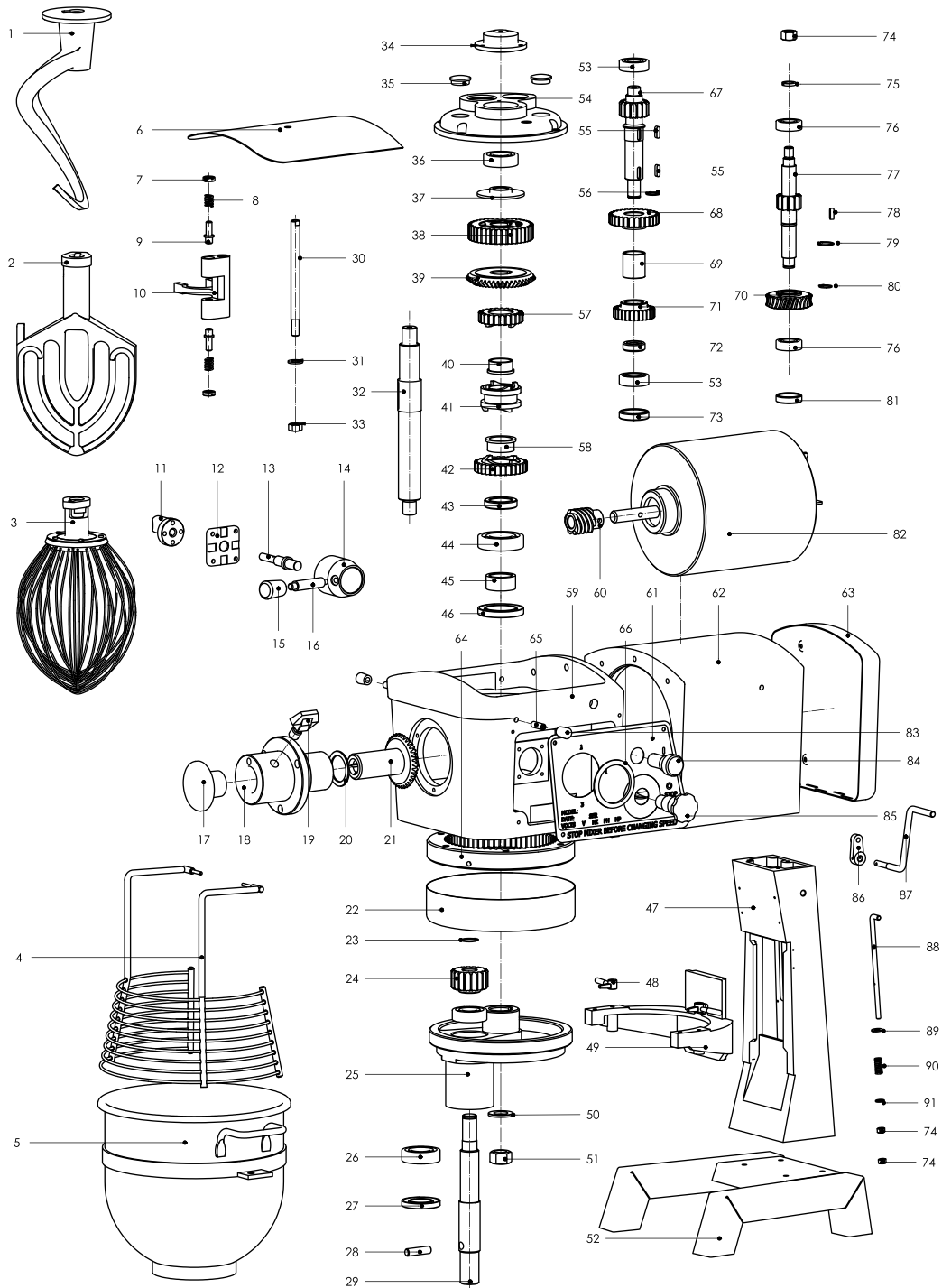


Parts Breakdown

Model MX-CN-0030-G 20442





Parts Breakdown

Model MX-CN-0030-G 20442

Item No.	Description	Position	Item No.	Description	Position	Item No.	Description	Position
24951	Dough Hook for 20442	1	24989	Gear for 20442	38-2	25026	Gear for 20442	71
24952	Beater for 20442	2	24990	Roller for 20442	38-3	25027	Gasket for 20442	72
24953	Wire Whip for 20442	3	24880	Spring for 20442	38-4	25028	Plug 1 for 20442	73
24954	Safety Guard for 20442	4	24992	Gear for 20442	39	25029	Nut for 20442	74
24955	Bowl for 20442	5	24901	Bushing for 20442	40	25030	Spring Washers for 20442	75
24956	Top Cover for 20442	6	24994	Sleeve for 20442	41	25084	Bearing for 20442	76
24960	Shifting Yoke for 20442	7-10	24995	Gear for 20442	42	25032	Shaft Worm Gear for 20442	77
24863	Cam-Gear Shifter for 20442	11	24996	Gasket for 20442	43	25008	Key for 20442	78
24864	Plate-Shifter Index for 20442	12	24997	Bearing for 20442	44	25034	Circlips for Shaft for 20442	79
24963	Handle-Shifter for 20442	13	24998	Bushing for 20442	45	25035	Circlips for Shaft for 20442	80
24964	Handle Set for 20442	14	24999	Oil Seal for 20442	46	25036	Plug 2 for 20442	81
24965	Turnset for 20442	15	25000	Body Housing for 20442	47	25037	Motor for 20442	82
24966	Speed Handle for 20442	16	25001	Bowl Hold Down Kit for 20442	48	25038	Rubber for 20442	83
24967	Plug for 20442	17	25002	Support for 20442	49	24922	Green Button Round for 20442	84
24968	Attachment Hub for 20442	18	25003	Spacer for 20442	50	25040	Red Stop Button without Timer CSA for 20442	85
24870	Tighten Handle for 20442	19	25004	Nut for 20442	51	25041	On/Off Switch/Button with Timer for 20442	85
24871	Ring for 20442	20	25005	Base for 20442	52	25042	Crank Lever for 20442	86
24971	Gear for 20442	21	25006	Bearing for 20442	53	25043	Handle-Shifter for 20442	87
24972	Hood Ring for 20442	22	25007	Transmission Shaft Support for 20442	54	25044	Connecting Rod for 20442	88
24973	Circlips for Shaft Q for 20442	23	25008	Key for 20442	55	24938	Spacer for 20442	89
24974	Planetary Gear for 20442	24	25009	Circlips for Shaft for 20442	56	25046	Spring for 20442	90
24975	Operating Shelf for 20442	25	25010	Gear for 20442	57	25047	Spacer for 20442	91
24905	Bearing 6205 for 20442	26	25011	Bushing for 20442	58	15559	Angle Iron for 20442	92
24977	Oil Seal for 20442	27	25012	Front Housing for 20442	59	25049	Rail Guide Plater for 20442	93
24978	Pin for 20442	28	25013	Worm Wheel-New for 20442	60	25050	Run Capacitor 60 UF - New for 20442	
24979	Working Shaft for 20442	29	25015	Mark for 20442	61	16323	Run Capacitor 40uf for 20442	
24980	Declutch Shift Shaft for 20442	30	25016	Case for 20442	62	25052	Start Capacitor 400 UF for 20442	
24939	Spacer for 20442	31	25017	Back Cover for 20442	63	25053	Contact-Relay for 20442	
24982	Main Shaft for 20442	32	25018	Internal Gear for 20442	64	25054	Power Cord for 20442	
24883	Nut for 20442	33	25019	Screw for 20442	65	25055	Reset-Overload Switch for 20442	
24984	Top Batter Valve Cap for 20442	34	25020	Seal Up Ring for 20442	66	24950	Rear Cover Screws for 20442	
24985	Plug Cover for 20442	35	25021	Gear Shaft for 20442	67	24947	Safety Guard-Bowl Switch for 20442	
25070	Bearing 6204 for 20442	36	25022	Gear for 20442	68	25152	Timer Knob for 20442	
24987	Spacer-Lower for 20442	37	25023	Bushing for 20442	69			
24988	Big Gear for 20442	38-1	25024	Brass Gear-New Style 28 Teeth for 20442	70			