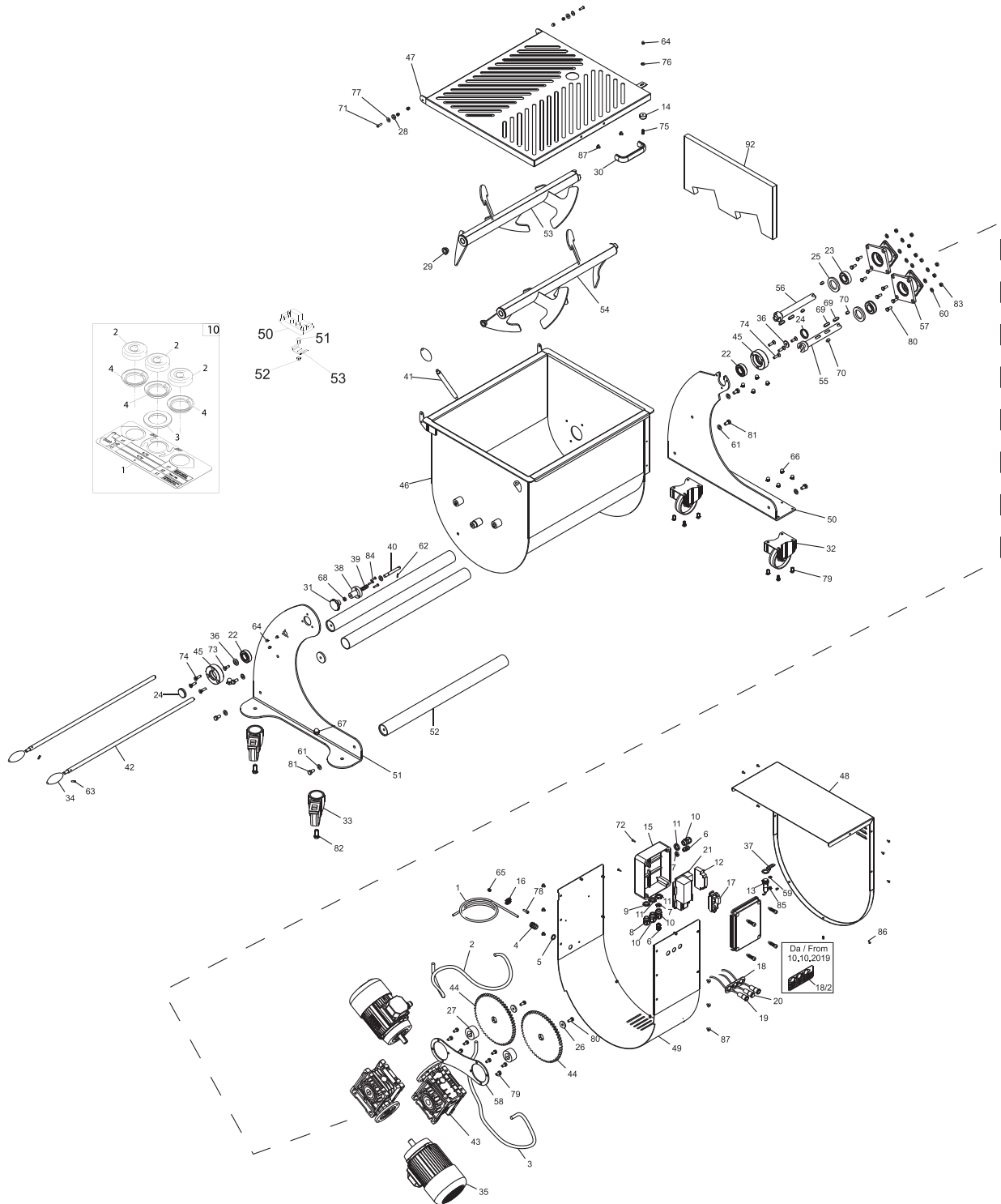


# Parts Breakdown

Model MM-IT-0120 37451



# Parts Breakdown

## Model MM-IT-0120 37451

Item No.	Description	Position	Item No.	Description	Position	Item No.	Description	Position
AE728	Frór Cable 4x1.50 for 37451	01	61596	Gasket 40-62-7 for 37451	25	AE738	DIN Guide Omega H.7mm L = 20mm for 37451	53
AN673	Mask. 3 Buttons Acc. x Cap Silic. for 37451	1	61610	Zinc Washer M8x30 H4 for 37451	26	AC070	Female Paddle for 37451	53
62602	Power Lead Motor TF/1.5 for 37451	02	61607	Bushing for 37451	27	AC146	Male Paddle for 37451	54
AN674	Silicone Capsule x Puls. Steel for 37451	2	AN183	Dist. Plast 18x6.4x3 Micro for 37451	28	61595	Transc. Pin Femm L = 220 for 37451	55
AE729	Power Cable TF TC BZ Engine for 37451	03	62621	Bush Flang. JFM-1622-12 TCM-ME for 37451	29	61598	Transc. Pin Masc L = 220 for 37451	56
AN675	Dist. 19.1x30x2 Black PExPuls. Stop for 37451	3	66642	Handle - New Style/for Side of Container for 37451	30	AE734	Flange Motorid for 37451	57
61604	Strain Relief + Nut for 37451	04	79656	Knob for Fixing Container for 37451	31	61606	Bracket Lock Gear for 37451	58
AN676	Nut x Silic Cover. Puls. Steel for 37451	4	61556	Stainless Steel Non-Swivel.Caster D.100 for 37451	32	62643	Flat Washer DIN 125 D 6 for 37451	59
61603	Nut Ott.Nich.PG 11 for 37451	05	61579	Mobile Wheel with Brake D 100 C/Perno for 37451	33	62644	Flat Washer DIN 125 D 8 for 37451	60
62605	Plastic Cable Gland PG7 for 37451	06	78634	Knob for 37451	34	62645	Flat Washer DIN 125 D 10 for 37451	61
AG286	Plastic Nut PG 7 for 37451	07	AE731	Engine Mixing kg.180 HP3 380/60 for 37451	35	62646	Elastic Spine DIN 1481 3x18 for 37451	62
62606	PG 11 Plastic Cable Gland for 37451	08	61590	Washer SO 1650 Inox for 37451	36	62647	Elastic Pin DIN 1481 5x20 for 37451	63
AG287	Plastic Nut PG 11 for 37451	09	AN184	Supp.Sens.Cod. D.18 Piegat. SO Inox for 37451	37	62648	Blind Nut DIN 1587 M5 for 37451	64
62607	Essacavo + Dado Plastica PG for 37451	10	61569	Boat Stops Crade for 37451	38	61583	Nut DIN 1587 M6 for 37451	65
AN677	Show Kit 3 Buttons x Cuff Silic for 37451	10	61571	Spring for 37451	39	62650	P Nut DIN 1587 M8 for 37451	66
AG288	Plastic Nut PG 13.5 for 37451	11	61570	Pin for 37451	40	62651	Blind Nut DIN 1587 M12 for 37451	67
AN179	Control Unit for Safety Switches for 37451	12	61564	Lever Rod for Container Overturning for 37451	41	62652	Nut ES. DIN 439 M10 Low for 37451	68
AN180	Round Sensor L=2000 SO2020-2400IX for 37451	13	61591	Paddle Rod for 37451	42	AN556	DIN 6885/A 8x7x28 Tabs for 37451	69
AN181	Round Magnet Diam.25 for 37451	14	AE733	Reducer MRV 063 B14 R = 49 for 37451	43	62654	Feathers DIN 6885 / AB 8x7x16 for 37451	70
61549	Box GW 44207 for 37451	15	61605	Ring Gear for 37451	44	62655	Screw TBEI ISO 7380 M6x25 for 37451	71
61608	Terminal Comb. BZ for 37451	16	61585	Shaft Support SX for 37451	45	AE740	Screw Autof.TC + DIN 7981 D 3.5x16 for 37451	72
62670	B Overload Protection EQ for 37451	17, 50	61577	Cradle Inox for 37451	46	AN185	Vite TSPEI DIN 7991 M8x25 for 37451	73
AE730	Mascher. Three Puls. Acc. TC-ME H = 36 for 37451	18	61578	Tank Cover for 37451	47	62658	Screw TSPEI DIN 7991 M8x30 for 37451	74
AN182	Mascher. Tre Puls. Acc. for 37451	18/2	61588	Motor Cover for 37451	48	AN186	Vite TSP Torx DIN 7991 M5x20 TX25 for 37451	75
60396	Stainless Steel On Button with Lamp for 37451	19	61584	Carter Band Mot. for 37451	49	AN187	Washer Large DIN 9021 D 5x15 for 37451	76
60397	Stainless Steel Off Button for 37451	20	61600	Base DX Rid. for 37451	50	62660	Washer F Wide DIN 9021 D 6x18 for 37451	77
41224	Circuit Board R3+Autom EQ for 37451	21	60080	Screw Poeliers M5x12 (Pack of 10) for 37451	51	62661	Hex.Socket Head Cap Screw M6x20 for 37451	78
61586	Bearing 6205 ZZ for 37451	22	61599	Base SX for 37451	51	62662	Screw TE DIN 933 M8x16 T.F. for 37451	79
61597	Bearing Reg. SP 7205 for 37451	23	60079	Self-Locking Nut ES DIN 982 M5 High for 37451	52	62663	X.Screw DIN 933 M8x20 for 37451	80
61589	Cap 40/7/C Pulley 1C SO1650 for 37451	24	61601	Tube Union Bases for 37451	52	62664	Screw TE DIN 933 M10x20 T.F. for 37451	81

# Parts Breakdown

---

## Model MM-IT-0120 37451

Item No.	Description	Position	Item No.	Description	Position	Item No.	Description	Position
62665	Screw TE DIN 933 M12x30 T.F. for 37451	82	62668	Self-Lock Nut ES DIN 982 M6 High for 37451	85	AN188	Isolamento Vasca Mot. for 37451	92
62666	Hex.Nut DIN 934 M8 for 37451	83	62669	Poeliers M4x10 Screw for 37451	86			
62667	Flathead CSK Screw DIN 963 M5x25 for 37451	84	60081	Screw Poeliers M6x10 for 37451	87			