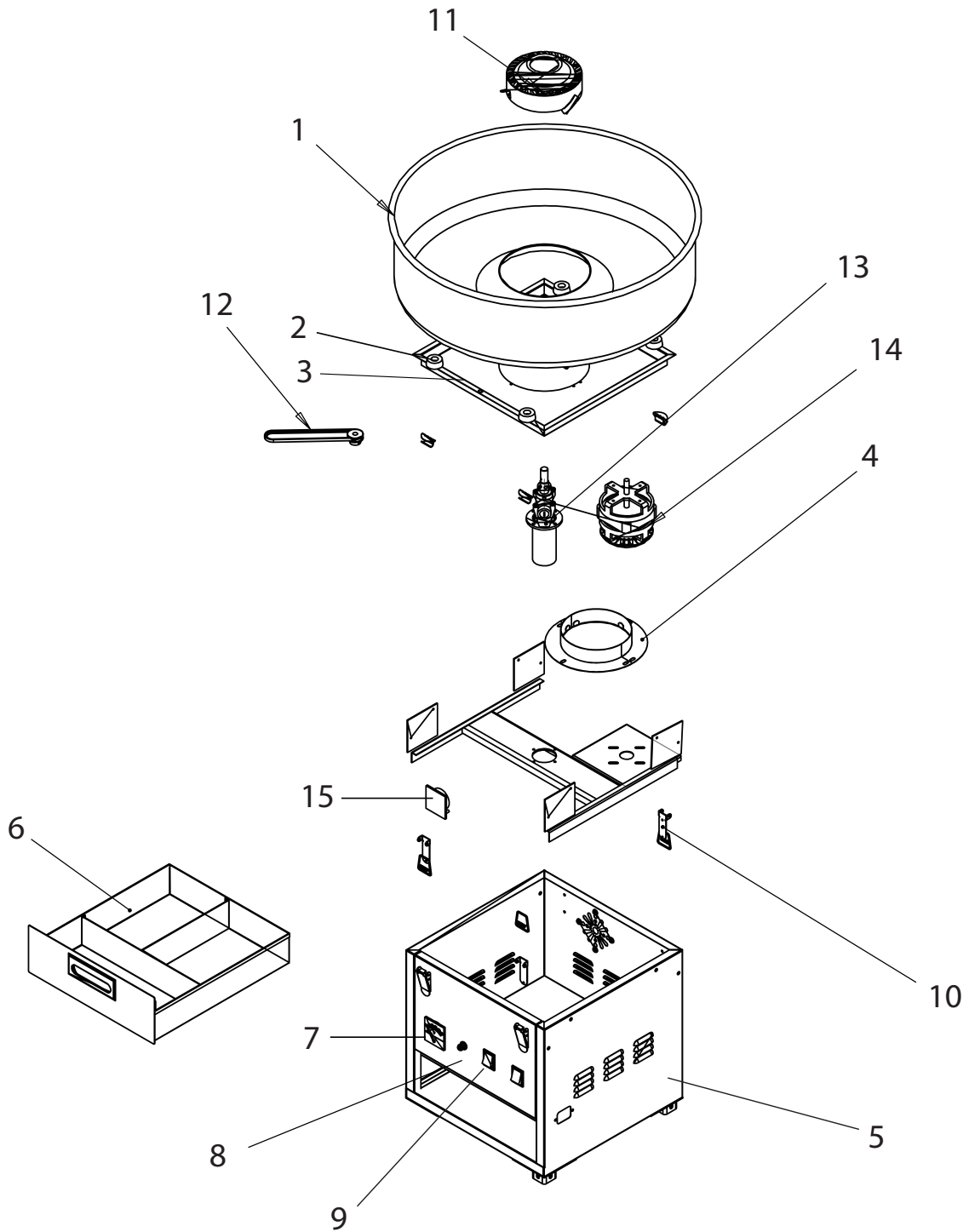


Parts Breakdown

Model **CF-CN-0520** 41336



Parts Breakdown

Model CF-CN-0520 41336

| Item No. | Description | Position | Item No. | Description | Position | Item No. | Description | Position |
|----------|-------------------------------------|----------|----------|--------------------------------------|----------|----------|---|----------|
| 76499 | Pan for 41336 | 1 | 76501 | Belt for 41336 | 12 | 63662 | Internal Wire (300V 16AWG) for 41336 | |
| 63658 | Foot for 41336 | 2 | 76518 | Axis Assemble for 41336 | 13 | 63663 | Cable Tie for 41336 | |
| 76500 | Layer Board for Pan for 41336 | 3 | 76517 | Motor for 41336 | 14 | 63665 | Inlet for 41336 | |
| 76515 | Protection Assemble for 41336 | 4 | 63671 | Motor Capacitor for 41336 | 15 | 63666 | Fuse for 41336 | |
| 76509 | Rack for 41336 | 5 | 63656 | Power Supply Cord for 41336 | | 63667 | Interlock Switch for 41336 | |
| 76504 | Drawer for 41336 | 6 | 63657 | Connector for 41336 | | 63668 | Silicone Coated Fiberglass Sleeve for 41336 | |
| 76506 | Switch Fuse Voltage Meter for 41336 | 7 - 9 | 63659 | PVC Tube for 41336 | | 63669 | Thermo-Limit (230C) for 41336 | |
| 76510 | Hook for 41336 | 10 | 63660 | Heating Shrinkable Tube for 41336 | | 63670 | Thermo-Limit (245C) for 41336 | |
| 76498 | Heating Head for 41336 | 11 | 63661 | Internal Wire (600V 18AWG) for 41336 | | 63672 | Marking Label for 41336 | |