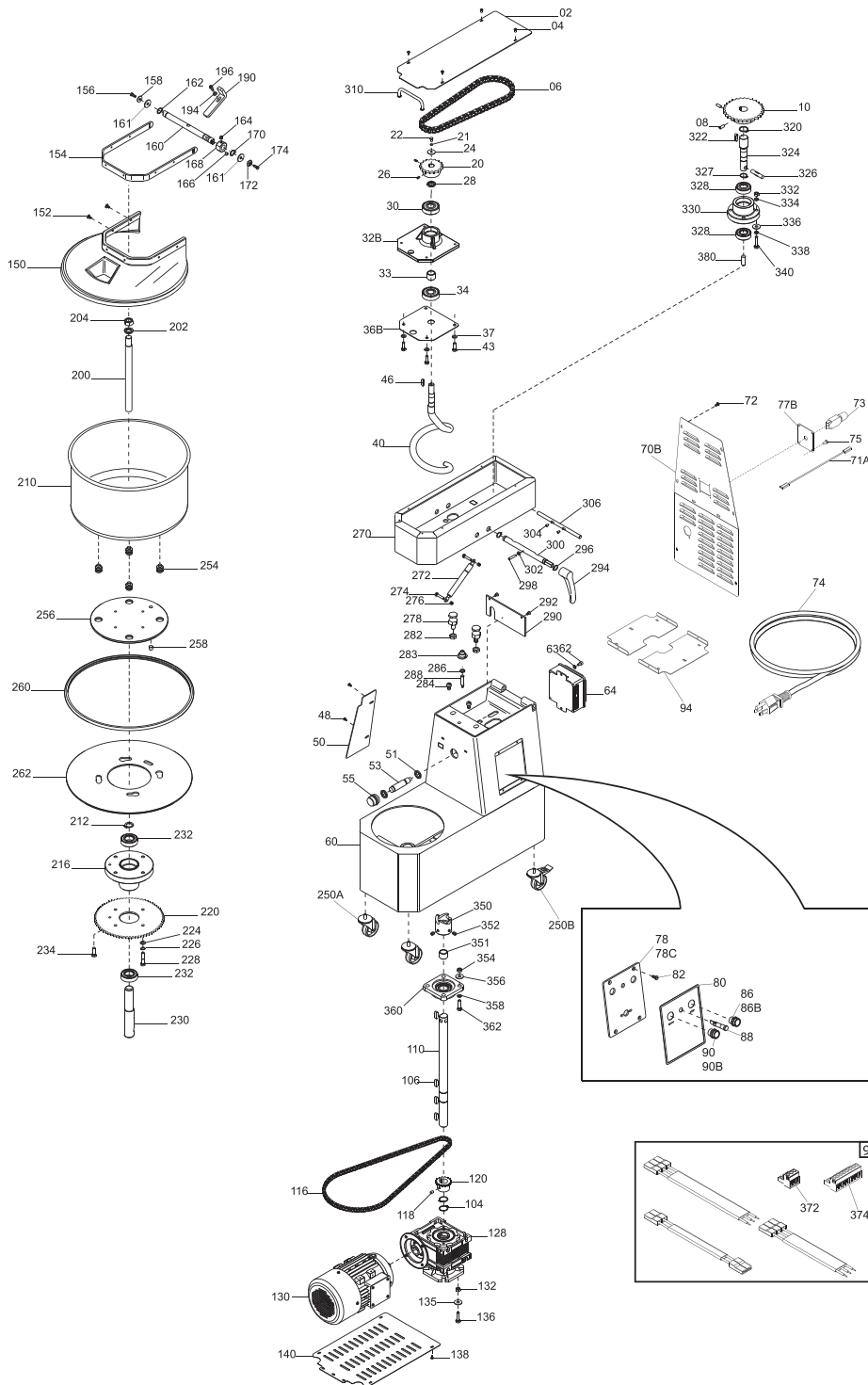


Parts Breakdown

Model **MX-IT-0020-RT** 47287



Parts Breakdown

Model MX-IT-0020-RT 47287

Item No.	Description	Position	Item No.	Description	Position	Item No.	Description	Position
AH080	Upper Casing ETL TA 20 VRN for 47287	02	AH022	Screw TE Din 933 M8x25 T.F. for 47287	43	AH014	Washer F.Larga Din 9021 D4x12 for 47287	84
69217	Screw Poeliers M4x8 for 47287	04	AH008	Feathers Din 6885 / A5x5x25 for 47287	46	AG949	Black Push Button N.O. for 47287	86
AG956	Chain Spir. 1/2x5/16" for 47287	06	69217	Screw Poeliers M4x8 for 47287	48	AG947	Stainless Steel Off Button Resin-Coated Y12 UL for 47287	86B
AH031	Screw Din 916 M6x20 NE for 47287	08	AH073	Internal Wiring 110/60 UL TA for 47287	49	AG951	Unified Light UL 24 V for 47287	88
AG959	Pinion Z30 1/2x5/16" for 47287	10	AG985	Tank Protection ETL Vern. for 47287	50	AG950	White Push Button N.O. for 47287	90
AH027	Nut ES. Din 934 M10 for 47287	12	AH076	Proximity Sensor TA for 47287	53+51	AG948	Stainless Steel On Button with Light Y12 Resin UL for 47287	90B
62645	Flat Washer Din 125 D10 for 47287	15	AH096	Proximity Support for 47287	55	AH084	Internal Panel ETL 20 TA for 47287	94
AH016	Washer F.Larga Din 9021 D10x30 for 47287	16	AH079	Welded Frame ETL TA 20 Vern. for 47287	60	62652	Nut ES. Din 439 M10 Low for 47287	96
AH025	Screw TE Din 933 M10x35 T.F. for 47287	18	62660	Washer F Wide Din 9021 D6x18 for 47287	61	AH027	Nut ES. Din 934 M10 for 47287	97
AG960	Pignon Z17 1/2x5/16" D16 for 47287	20	AH019	Screw TCEI Din 912 M6x10 for 47287	62	62645	Flat Washer Din 125 D10 for 47287	98
AH003	Grower Washer UNI 1751 D.6 for 47287	21	AG995	Electrical Box UL 110/60 for 47287	64	AH073	Internal Wiring 110/60 UL TA for 47287	99
AH021	Screw TE Din 933 M6x22 T.F. for 47287	22	AH081	Rear Carter Y16 ETL TA 20 VRN for 47287	70B	AH007	Retaining Rings Din 471 D25E for 47287	104
AH002	Grower Washer Uni 1751 D5 for 47287	23	AG952	Power Cable UL Thermal Protection for 47287	71A	AH009	Feathers Din 6885 / A8x7x25 for 47287	106
AH015	Washer F.Larga Din 9021 D6x24 for 47287	24	69217	Screw Poeliers M4x8 for 47287	72	AH078	Transmission Shaft TS 20 for 47287	110
AH029	Screw Din 916 M4x10 NE for 47287	26	AG967	Thermal Protection T11 211 15A UL for 47287	73	AG957	Tank Chain 3/8x7/32" for 47287	116
AG974	Spiral Support Distance for 47287	28	AG966	Power Cable 110/60 ETL PA244S for 47287	74	AH030	Grub Screw Din 916 M6x8 NE for 47287	118
AG946	Ball Bearing 6303 2-RD HRC 20 for 47287	30	AH010	Screw Autof.TC+Din 7981 D3x8 for 47287	75	AG961	Pignone Z16 3/8x7/32" D25 CHI. for 47287	120
AG954	Spiral Cast Iron Supp Y12 HRC 20 Lav. for 47287	32B	AG991	Supp. Plate Prot. Term. MN for 47287	77B	AG964	Rid.NMRV 050 B14 1/30 FA80 F1 for 47287	128
AG976	Spacer for 47287	33	AH060	Plate. Controls Panel for 47287	78	AG963	Motor MC 80 0.75KW B14 4P UL 115/60 for 47287	130
AG946	Ball Bearing 6303 2-RD HRC 20 for 47287	34	AG987	CE Stainless Steel Control Plate for 47287	78C	AH027	Nut ES. Din 934 M10 for 47287	132
AG973	Spiral Support Plate Y12 for 47287	36B	AH011	Screw TC+Din 7985 M4x8 for 47287	79	62645	Flat Washer Din 125 D10 for 47287	135
62644	Flat Washer Din 125 D8 for 47287	37	AG971	Face Plate. Controls Panel for 47287	80	AH024	Screw TE Din 933 M10x30 T.F. for 47287	136
AG972	Spiral Y17 for 47287	40	AH012	Screw TSPEI Din 7991 M5x8 for 47287	82	69217	Screw Poeliers M4x8 for 47287	138

Parts Breakdown

Model MX-IT-0020-RT 47287

Item No.	Description	Position	Item No.	Description	Position	Item No.	Description	Position
AG988	Lower Cover for 47287	140	AH007	Retaining Rings Din 471 D25E for 47287	212	AH099	Washer Din 125 D12 for 47287	280
AG994	ETL Thermoformed Protection for 47287	150	AG955	Bowl Holder for 47287	216	AH109	Self-Lock Nut ES Din 982 M12 Low for 47287	282
69218	Screw Poeliers M5x8 for 47287	152	AG962	Crown Z70 3/8x7/32" LAV.CHI. for 47287	220	AH097	Supp. Cover Sensor M10 TA for 47287	283
AG992	Cover Profile Prot. for 47287	154	AH004	Grower Washer UNI 1751 D8 for 47287	226	AH094	Pin TA for 47287	284
AH013	Flathead CSK Screw Din 7991 M5x14 for 47287	156	AH023	Screw TE Din 933 M8x35 T.F. for 47287	228	AH077	Magnetic Sensor Head UL TA for 47287	288
AG980	Shaft. Tank Protection for 47287	160	AG981	Shaft. Bowl Support for 47287	230	AH083	Protection Micro ETL TA 20 VRN for 47287	290
AG996	Plastic Washer 16x25x1 for 47287	161	AH032	Screw without Head Din 916 M8x16 NE for 47287	231	AH012	Screw TSPEI Din 7991 M5x8 for 47287	292
AH006	Stop Rings Din 471 D15E for 47287	162	AG945	Bearing 6205 2RS ORS for 47287	232	AH095	Release Lever. TA for 47287	294
AH030	Grub Screw Din 916 M6x8 NE for 47287	164	AH022	Screw TE Din 933 M8x25 T.F. for 47287	234	AH101	Retaining Rings Din 471 D16E for 47287	296
18960	Magnet for SO Anodized for 47287	166	AG998	Wheel ETL CMT1-3PBB for 47287	250A	AH104	Grub Screw Din 913 M4x35 CE for 47287	298
AG997	Cam TA for 47287	168	AG999	ETL Wheel C/Brake CMT1-3PPB for 47287	250B	AH090	Release Shaft TA 20 for 47287	300
AG977	Washer for 47287	172	AH087	Bowl Insert. TA for 47287	254	AH026	Hex.Nut Din 934 M4 for 47287	302
AH026	Hex.Nut Din 934 M4 for 47287	177	AH085	Fixed Disc TA for 47287	256	AH030	Grub Screw Din 916 M6x8 NE for 47287	304
AH000	Washer Flat Din 125 D.4 for 47287	179	AH086	Pin for 47287	258	AH091	Head Hinge Shaft TA 20 for 47287	306
69215	Nut Din 934 M3 for 47287	182	AH098	Rubber Mobile Disc TA 20 for 47287	260	AH075	Handle TA for 47287	310
AH017	Screw TCEI Din 912 M4x12 for 47287	184	AH088	Disco Mobile TA 20 for 47287	262	AH007	Retaining Rings Din 471 D25E for 47287	320
AG989	Corner Plate for 47287	190	AH082	Welded Head ETL TA 20 Vern. for 47287	270	AC008	Screw Din 916 M8x10 NE for 47287	321
AH000	Washer Flat Din 125 D.4 for 47287	194	AH017	Screw TCEI Din 912 M4x12 for 47287	271	AH009	Feathers Din 6885 / A8x7x25 for 47287	322
AH017	Screw TCEI Din 912 M4x12 for 47287	196	AH072	Gas Spring 094323 TA 20 for 47287	272	AH089	Transmission Shaft for 47287	324
AG979	Rod Breaker for 47287	200	AH014	Washer F.Larga Din 9021 D4x12 for 47287	273	AH103	Pin Inox Din 7 D10x50 for 47287	326
AH005	Grower Washer UNI 1751 D18 for 47287	201	AH105	Screw TE Din 933 M6x30 T.F. for 47287	274	AH102	C-Clip.Retaining Din 471 D.20 Ext for 47287	327
AH033	Flat Washer Din 125 D18 Zinc for 47287	202	62643	Flat Washer Din 125 D6 for 47287	275	AH034	Ball Bearing 6204 2RS NTN for 47287	328
AH028	Nut ES. Din 934 M18 for 47287	204	AH106	Hex.Nut Din 934 M6 for 47287	276	AH071	Head Holder for 47287	330
AG975	Processing Tank 360x210 for 47287	210	AH093	Hexagonal Screw for 47287	278	62644	Flat Washer Din 125 D8 for 47287	334

Parts Breakdown

Model MX-IT-0020-RT 47287

Item No.	Description	Position	Item No.	Description	Position	Item No.	Description	Position
AH004	Grower Washer UNI 1751 D8 for 47287	336	AH027	Nut ES. Din 934 M10 for 47287	354	AG958	Flange Support for 47287	360
62645	Flat Washer Din 125 D10 for 47287	338	AH009	Feathers Din 6885 / A8x7x25 for 47287	355	AH025	Screw TE Din 933 M10x35 T.F. for 47287	362
AH108	Screw TBSQ Din 603 M8x35 Zinc for 47287	340	62644	Flat Washer Din 125 D8 for 47287	356	AH108	Screw TBSQ Din 603 M8x35 Zinc for 47287	362
AH092	Transmission Joint TA for 47287	350	62645	Flat Washer Din 125 D10 for 47287	356	AG969	3-Pole HRC Connector for 47287	372
AH074	Distance Transm. Joint 20-30 TA for 47287	351	AH004	Grower Washer UNI 1751 D8 for 47287	357	AG970	8 Poles HRC Connector for 47287	374
AC008	Screw Din 916 M8x10 NE for 47287	352	AH100	Grower Washer Uni 1751 D10 for 47287	357	AH107	Screw without Head Din 916 M8x12 NE for 47287	380
AH030	Grub Screw Din 916 M6x8 NE for 47287	353	62645	Flat Washer Din 125 D10 for 47287	358			