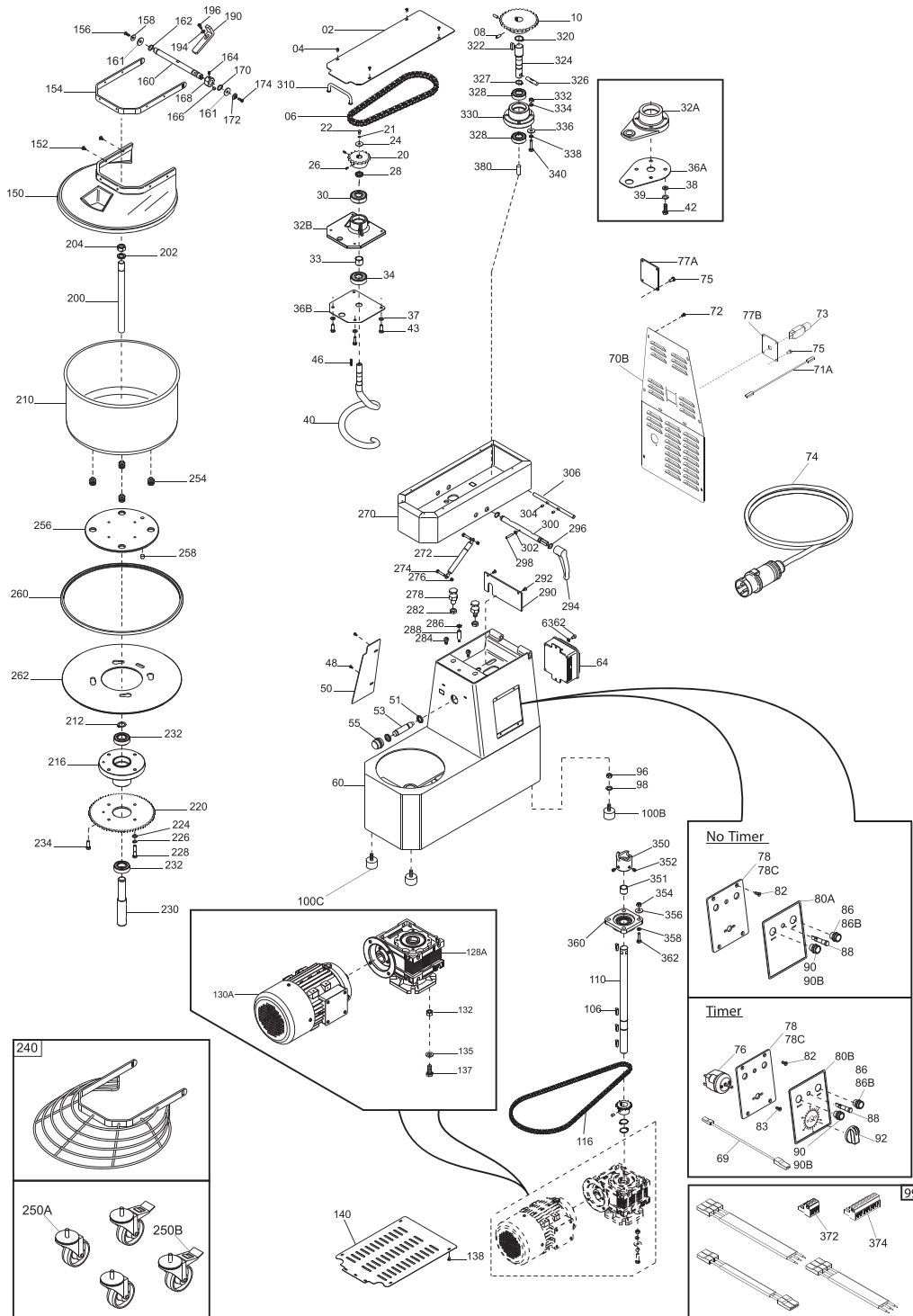


Parts Breakdown

Model MX-IT-0030-RT 47288



Parts Breakdown

Model MX-IT-0030-RT 47288

Item No.	Description	Position	Item No.	Description	Position	Item No.	Description	Position
AH116	Upper Casing ETL TA 30 VRN for 47288	02	AH059	Tank Protection ETL Vern. for 47288	50	AH113	Internal Wiring 220/60 UL TA for 47288	99
69217	Screw Poeliers M4x8 for 47288	04, 48, 72, 83, 138	AH076	Proximity Sensor TA for 47288	53, 51	AH007	Retaining Rings Din 471 D25E for 47288	104, 212, 320
AH038	Chain 1/2x5/6" for 47288	06	AH096	Proximity Support for 47288	55	AH009	Feathers Din 6885 / A8x7x25 for 47288	106, 322, 355
AH031	Screw Din 916 M6x20 NE for 47288	08	AH115	Welded Frame ETL TA 30 Vern. for 47288	60	AH114	Transmission Shaft T1 30-40 for 47288	110
AG959	Pinion Z30 1/2x5/16" for 47288	10	62660	Washer F Wide Din 9021 D6x18 for 47288	61	AH039	Chain 3/8x7/32" for 47288	116
AH027	Nut ES. Din 934 M10 for 47288	12, 97, 132, 354	AH019	Screw TCEI Din 912 M6x10 for 47288	62	AH030	Grub Screw Din 916 M6x8 NE for 47288	118, 164, 304, 353
62645	Flat Washer Din 125 D10 for 47288	15, 135, 338, 358	AH066	Electric Box TGM2SIR MN for 47288	64	AH041	Pinion Z20 3/8x7/32" D25 for 47288	120
AH016	Washer F.Larga Din 9021 D10x30 for 47288	16	AH117	Rear Carter Y16 ETL TA 30 VRN for 47288	70B	AH044	Reducer NMRV 063 B14 1/30 FA 90 for 47288	128A, 130A
AH025	Screw TE Din 933 M10x35 T.F. for 47288	18, 362	AG952	Power Cable UL Thermal Protection for 47288	71A	62664	Screw TE Din 933 M10x20 T.F. for 47288	137
AH040	Pinion Z17 1/2x5/16" D20 for 47288	20	AH046	Thermal Protection T11-211 11A MN for 47288	73	AH061	Underdeck Protection for 47288	140
AH004	Grower Washer UNI 1751 D8 for 47288	21, 23, 226, 336	AH112	Power Cable Comp. 220/60 UL for 47288	74	AH065	ETL Thermoformed Protection for 47288	150
62663	X.Screw Din 933 M8x20 for 47288	22	AG991	Supp. Plate Prot. Term. MN for 47288	77B	69218	Screw Poeliers M5x8 for 47288	152
AH070	Washer F Wide Din 9021 D8x32 ZN for 47288	24	AH060	Plate. Controls Panel for 47288	78	AH063	Lid Frame for 47288	154
AH069	Screw without Head Din 916 M5x16 NE for 47288	26	AH011	Screw TC+Din 7985 M4x8 for 47288	79	AH013	Flathead CSK Screw Din 7991 M5x14 for 47288	156
AH050	Spacer for 47288	28	AG971	Face Plate. Controls Panel for 47288	80A	AH055	Lid Shaft for 47288	160
AH034	Ball Bearing 6204 2RS NTN for 47288	30, 34	AH012	Screw TSPEI Din 7991 M5x8 for 47288	82, 292	AG996	Plastic Washer 16x25x1 for 47288	161
AH037	Spiral Cast Iron Supp Y12 HRC 30 Lav. for 47288	32B	AH014	Washer F.Larga Din 9021 D4x12 for 47288	84, 273	AH006	Stop Rings Din 471 D15E for 47288	162
AH052	Dist.Int.Cusc.Supp.Spiral for 47288	33	AG949	Black Push Button N.O. for 47288	86	18960	Magnet for SO Anodized for 47288	166
AH049	Spiral Support Plate Y12 for 47288	36B	AG947	Stainless Steel Off Button Resin-Coated Y12 UL for 47288	86B	AG997	Cam TA for 47288	168
62644	Flat Washer Din 125 D8 for 47288	37, 334, 356	AG951	Unified Light UL 24 V for 47288	88	AG977	Washer for 47288	172
AH048	Spiral Y17 for 47288	40	AG950	White Push Button N.O. for 47288	90	AH026	Hex.Nut Din 934 M4 for 47288	177, 302
AH022	Screw TE Din 933 M8x25 T.F. for 47288	43, 234	AG948	Stainless Steel On Button with Light Y12 Resin UL for 47288	90B	AH000	Washer Flat Din 125 D.4 for 47288	179, 194
AH067	Feathers Din 6885 / A6x6x25 for 47288	46	AH120	Internal Panel ETL 30 TA for 47288	94	69215	Nut Din 934 M3 for 47288	182

Parts Breakdown

Model MX-IT-0030-RT 47288

Item No.	Description	Position	Item No.	Description	Position	Item No.	Description	Position
AH017	Screw TCEI Din 912 M4x12 for 47288	184, 196, 271	AH086	Pin for 47288	258	AH104	Grub Screw Din 913 M4x35 CE for 47288	298
AG989	Corner Plate for 47288	190	AH124	Rubber Protection for 47288	260	AH122	Release Shaft TA 30 for 47288	300
AH054	Shaft for 47288	200	AH121	Rotating Disc 30 TA for 47288	262	AH123	Hinge Pin 30 TA for 47288	306
AH005	Grower Washer Uni 1751 D18 for 47288	201	AH118	Welded Head ETL TA 30 Vern. for 47288	270	AH075	Handle TA for 47288	310
AH033	Flat Washer Din 125 D18 Zinc for 47288	202	AH111	Gas Spring 084093 TA for 47288	272	AC008	Screw Din 916 M8x10 NE for 47288	321, 352
AH028	Nut ES. Din 934 M18 for 47288	204	AH105	Screw TE Din 933 M6x30 T.F. for 47288	274	AH089	Transmission Shaft for 47288	324
AH051	Bowl 400x260 for 47288	210	62643	Flat Washer Din 125 D6 for 47288	275	AH103	Pin Inox Din 7 D10x50 for 47288	326
AG955	Bowl Holder for 47288	216	AH106	Hex.Nut Din 934 M6 for 47288	276	AH102	C-Clip.Retaining Din 471 D.20 Ext for 47288	327
AH110	Chain Ring Z85 3/8x7/32" for 47288	220	AH093	Hexagonal Screw for 47288	278	AH071	Head Holder for 47288	330
AH023	Screw TE Din 933 M8x35 T.F. for 47288	228	AH099	Washer Din 125 D12 for 47288	280	AH092	Transmission Joint TA for 47288	350
AG981	Shaft. Bowl Support for 47288	230	AH109	Self-Lock Nut ES Din982 M12 Low for 47288	282	AH074	Distance Transm. Joint 20-30 TA for 47288	351
AH032	Screw without Head Din 916 M8x16 NE for 47288	231	AH097	Supp. Cover Sensor M10 TA for 47288	283	AG958	Flange Support for 47288	360
AG945	Bearing 6205 2RS ORS for 47288	232, 328	AH094	Pin TA for 47288	284	AG969	3-Pole HRC Connector for 47288	372
AG998	Wheel ETL CMT1-3PBB for 47288	250A	AH077	Magnetic Sensor Head UL TA for 47288	288	AG970	8 Poles HRC Connector for 47288	374
AG999	ETL Wheel C/Brake CMT1-3PPB for 47288	250B	AH119	Protection Micro ETL TA 30 VRN for 47288	290	AH107	Screw without Head Din 916 M8x12 NE for 47288	380
AH087	Bowl Insert. TA for 47288	254	AH095	Release Lever. TA for 47288	294			
AH085	Fixed Disc TA for 47288	256	AH101	Retaining Rings Din 471 D16E for 47288	296			