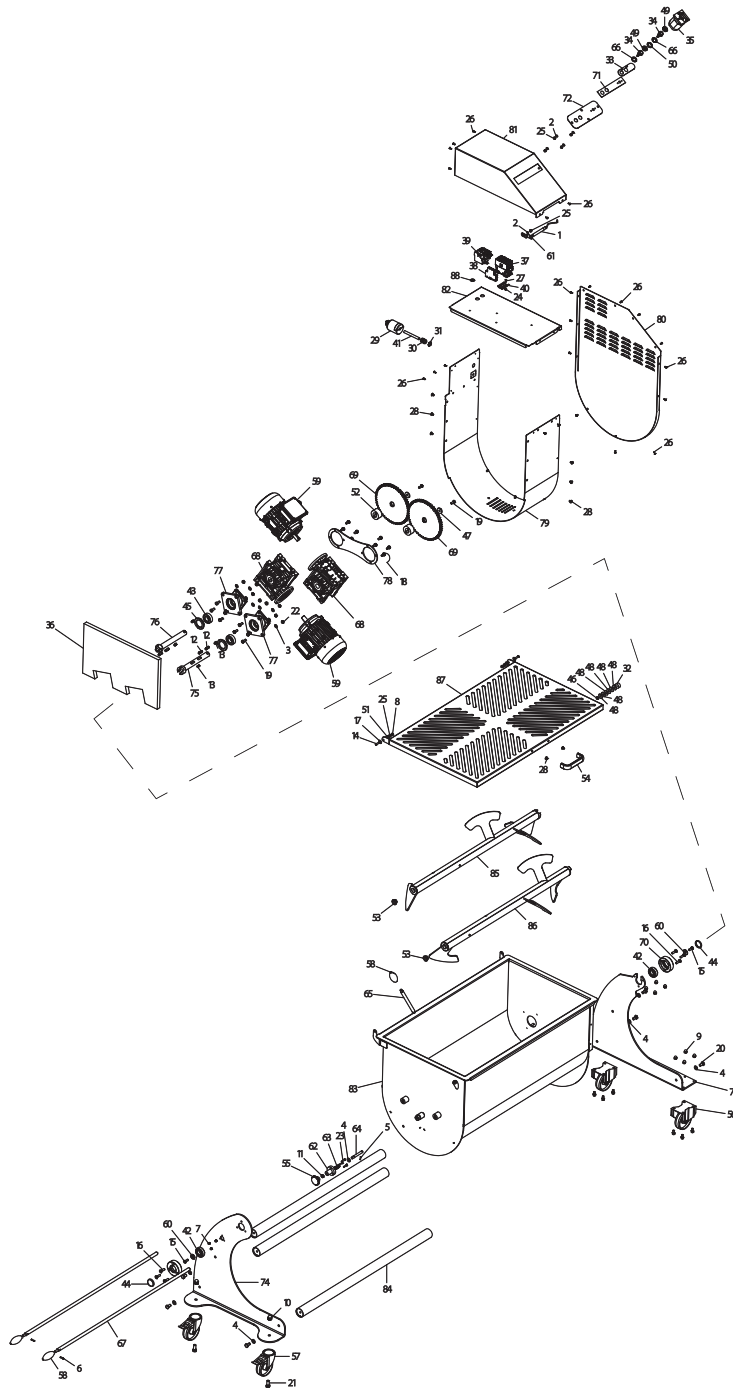


PARTS BREAKDOWN

ITEM	MODEL
48058	MM-IT-0180-ETL



PARTS BREAKDOWN

ITEM	MODEL
48058	MM-IT-0180-ETL

Item No.	Description	Position	Item No.	Description	Position	Item No.	Description	Position
AH077	Magnetic Sensor Head for 48058	1	62667	Flathead CSK Screw Din 963 M5 x 25 for 48058	23	61596	Gasket 40-62-7 for 48058	45
62643	Flat Washer Din 125 D 6 for 48058	2	66634	Self-Locking Nut ES Din 982 M 4 High for 48058	24	AP726	Round Sensor L=2000 S02020-2400IX for 48058	46
62644	Flat Washer Din 125 D 8 for 48058	3	62668	Self-Lock Nut ES Din 982 M 6 High for 48058	25	61610	Zinc Washer M8x30 H4 for 48058	47
62645	Flat Washer Din 125 D 10 for 48058	4	62669	Poeliers M 4x10 Screw for 48058	26	AP727	Nylon Washer D8,4 D25 H2 for 48058	48
62646	Elastic Spine Din 1481 3x18 for 48058	5	66633	Screw Poeliers M4x12 for 48058	27	AN674	Silicone Capsule x Puls. Steel for 48058	49
62647	Elastic Pin Din 1481 5x20 for 48058	6	60081	Screw Poeliers M 6x10 for 48058	28	AN675	Dist. 19.1x30x2 Black PE x Puls. Stop for 48058	50
62648	Blind Nut Din 1587 M5 for 48058	7	AP736	Plug Hubbel UL 20A 230/TF CSA for 48058	29	AN183	Dist. Plast 18x6,4x3 Micro ME-IP 10-20 for 48058	51
61583	Nut Din 1587 M 6 for 48058	8	61604	Strain Relief + Nut for 48058	30	61607	Bushing ME 80 Evo for 48058	52
62650	P Nut Din 1587 M8 for 48058	9	61603	Nut Ott.Nich.PG 11 for 48058	31	62621	Bush Flang. JFM-1622-12 TCM-ME for 48058	53
62651	Blind Nut Din 1587 M 12 for 48058	10	AN181	Round Magnet Diam.25 for 48058	32	18961	Handle - Old Style/Large (L-132mm) for 48058	54
62652	Nut ES. Din 439 M 10 Low (10 pcs/pk) for 48058	11	AM948	Key Pad IS-SO for 48058	33	79656	Knob for Fixing Container for 48058	55
62653	Feathers Din 6885 / A 8x7x28 for 48058	12	AN355	Stainless Steel Button MSM-19 UL Cut Ind for 48058	34	61556	Stainless Steel Non-Swivel.Caster D.100 for 48058	56
62654	Feathers Din 6885 / AB 8x7x16 for 48058	13	AP102	Rotary Switch 25Amp for 48058	35	61579	Mobile Wheel with Brake D 100 C/ Perno for 48058	57
62655	Screw TBEI ISO 7380 M 6x25 for 48058	14	AN188	Motor Tank Insulation ME-IP 120-180 Evo for 48058	36	78634	Knob for 48058	58
AN185	Screw TSPEI Din 7991 M 8x25 for 48058	15	39667	Remote Control Board AF 26-30-00-13 110/230 60Hz for 48058	37	AP738	Motor M80 HP 1,5 B14 4P 400/60 UL for 48058	59
62658	Screw TSPEI Din 7991 M 8x30 for 48058	16	39668	Contacteur Aus Lat x AF 26-30-00-13 ABB for 48058	38	61590	Washer SO 1650 Inox for 48058	60
62660	Washer F Wide Din 9021 D 6x18 for 48058	17	66632	Terminal Protection 13-16A ABB TF 42-16 for 48058	39	AN385	Supp. Micro Bending Micro 100W 3A UL for 48058	61
62662	Screw TE Din 933 M8x16 T.F. for 48058	18	66635	Guide Din Omega H.7mm L= 50mm for 48058	40	61569	Boat Stops Crade for 48058	62
62663	X.Screw Din 933 M8 x 20 for 48058	19	AP737	Cable AWG 4x14 SJTO 300V 105°C for 48058	41	61571	Spring for 48058	63
62664	Screw TE Din 933 M 10x20 T.F. for 48058	20	61586	Bearing 6205 ZZ for 48058	42	61570	Pin for 48058	64
62665	Screw TE Din 933 M 12x30 T.F. for 48058	21	61597	Bearing Reg. SP 7205 ME 80 Evo for 48058	43	61564	Lever Rod for Container Overturning for 48058	65
62666	Hex.Nut Din 934 M8 for 48058	22	61589	Cap 40/7/C Pulley 1C S01650 for 48058	44	AN676	Nut x Silic Cover. Puls. Steel for 48058	66

PARTS BREAKDOWN

ITEM	MODEL
48058	MM-IT-0180-ETL

Item No.	Description	Position	Item No.	Description	Position	Item No.	Description	Position
AE732	Shovel IX IP 180 Kg Double-Shaft for 48058	67	61595	Transc. Pin Femm L = 220 M and 120 Evo for 48058	75	AE727	Cot Inox ME 180 Evo for 48058	83
61593	Gear Box MRV 063 B14 R=49 for 48058	68	61598	Transc. Pin Masc L = 220 ME 120 Evo for 48058	76	AE736	Union Tube Bases ME 180 Evo for 48058	84
61605	Ring Gear ME 80 Evo for 48058	69	AE734	Flange Motorid for 48058	77	AE737	Female Shovel ME 180 Evo for 48058	85
61585	Shaft Support SX Evo for 48058	70	61606	Bracket Lock Gear ME 120 Evo for 48058	78	AE739	Male Shovel ME 180 Evo for 48058	86
AP733	Sheet 2 Puls. IX ME 80 Evo EL/ETL for 48058	71	AP740	Motor Carter Band ME 120 Evo EL/ETL for 48058	79	AP744	Basin Cover ME 180 Evo ETL for 48058	87
AP734	Sheet Int 2 Puls IX ME 80 Evo EL/ETL for 48058	72	AP741	Motor Carter ME 120 Evo EL/ETL for 48058	80	AM961	Ground Warning Label Diam.22 for 48058	88
61600	Base DX Rid. ME 120 Evo for 48058	73	AP742	Motor Carter Shell ME 120 Evo EL/ETL for 48058	81			
61599	Base SX ME 120 Evo for 48058	74	AP743	Sheet Imp. Ele/Mot. ME 120 Evo EL/ETL for 48058	82			