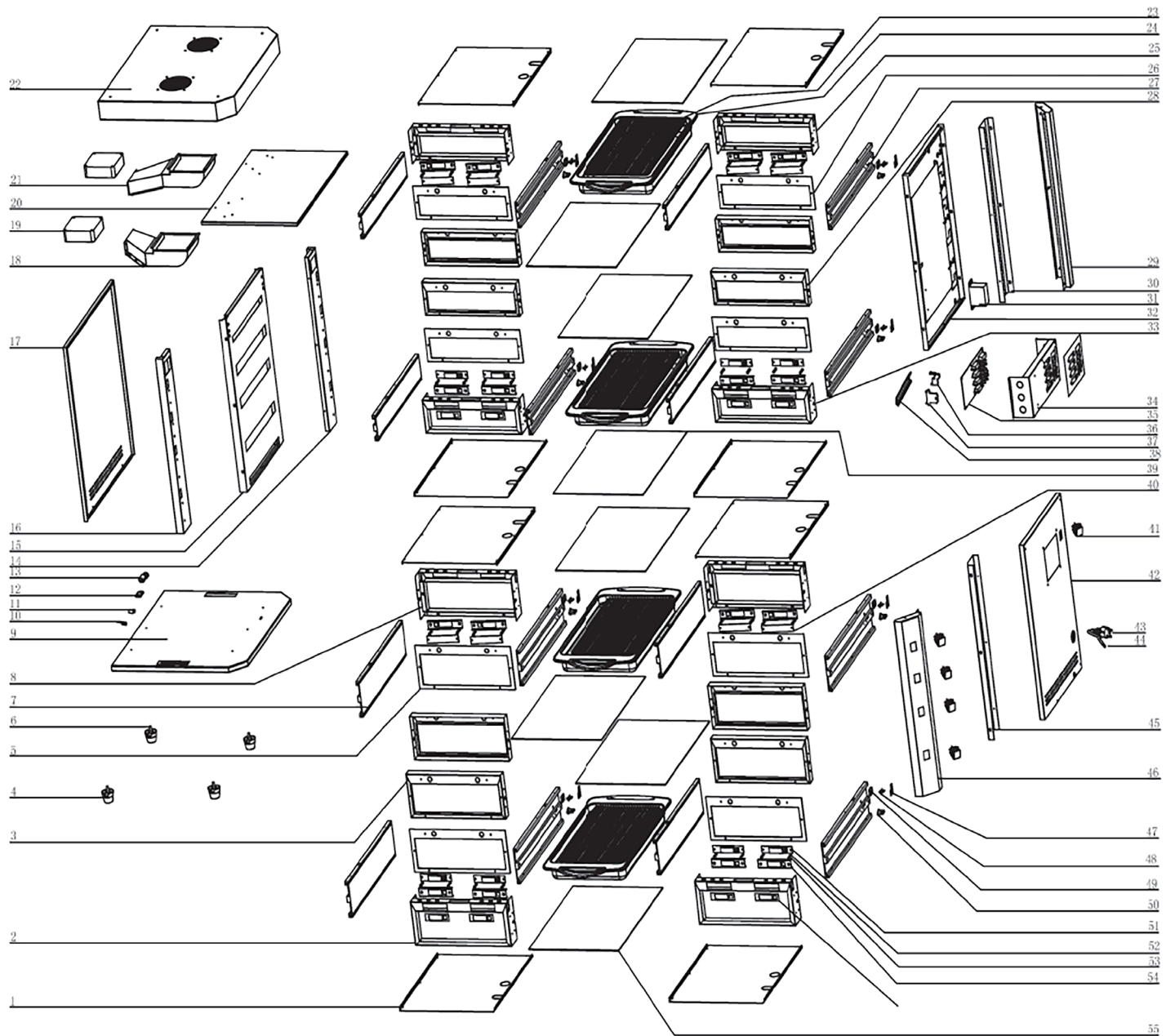


# Parts Breakdown

Model **FW-CN-0004-V** 48172



# Parts Breakdown

## Model FW-CN-0004-V 48172

| Item No. | Description  | Position | Item No. | Description   | Position | Item No. | Description                          | Position |
|----------|--|----------|----------|---|----------|----------|--------------------------------------|----------|
| AS298    | Thermal Insulation Cotton Cover Plate for 48172                    | 1        | AS312    | Fan Motor for 48172   | 19       | AS330    | Sliding Rail for 48172               | 38       |
| AS299    | Display Fixed Plate Assembly Left (Bottom) for 48172               | 2, 33    | AS313    | Wind Shield for 48172   | 20       | AS331    | Heat Insulating Plate for 48172      | 39       |
| AS300    | Left and Right Side Plate Fixing Plate Assembly (Bottom) for 48172 | 3        | AS314    | Air Duct Left Assembly for 48172                                | 21       | AS332    | Display Board (W1) for 48172         | 40       |
| AS301    | Rubber Feet for 48172  | 4        | AS315    | Top Cover Plate for 48172                                       | 22       | AR485    | Switch (Higher Amp) for 48172        | 41       |
| AS302    | Heat Insulation Pad (Bottom) for 48172                             | 5        | AS316    | 1/1 Shelf for 48172   | 23       | AS333    | Right Side Plate for 48172           | 42       |
| AS303    | Foot Pad for 48172   | 6        | AS317    | 1/1 High Temperature Resistant Conditioning Plate for 48172     | 24       | 67691    | Power Cord for 48172                 | 43       |
| AS304    | Left and Right Side Plate (Bottom) for 48172                       | 7        | AS318    | Display Fixed Plate Assembly Right (Top) for 48172              | 25       | AS334    | Power Line for 48172                 | 44       |
| AS305    | Air Duct Middle Assembly for 48172                                 | 8        | AS319    | Heat Insulation Pad (Top) for 48172                             | 26       | AS335    | Left Pillar on Right Side for 48172  | 45       |
| AS306    | Base Plate Assembly for 48172                                      | 9        | AS320    | Left and Right Side Plate (Top) for 48172                       | 27       | AS336    | Left Support on Right Side for 48172 | 46       |
| AD870    | Fixed Plate for 48172  | 10       | AS321    | Left and Right Side Plate Fixing Plate Assembly (Top) for 48172 | 28       | AS337    | Probe Pressure Plate for 48172       | 47       |
| AD869    | Equipotential Grounding Block for 48172                            | 11       | AS322    | Right Support on Right Side for 48172                           | 29       | AS338    | Temperature Sensor for 48172         | 48       |
| 61246    | Wire Clip Holder for 48172   | 12       | AS323    | Right Pillar on Right Side for 48172                            | 30       | AS339    | Probe Fixer for 48172                | 49       |
| 61245    | Wire Clamp Cover for 48172   | 13       | AS324    | Transformer for 48172   | 31       | AS340    | Controller 110°C for 48172           | 50       |
| AS307    | Left Pillar on Left Side for 48172                                 | 14       | AS325    | Right Pillar Connector for 48172                                | 32       | AS341    | Display Board (W2) for 48172         | 51       |
| AS308    | Left Pillar Connector for 48172                                    | 15       | AS326    | Computer Version of Fixed Plate for 48172                       | 34       | AS342    | Insulating Washer for 48172          | 52       |
| AS309    | Right Pillar on Left Side for 48172                                | 16       | AS327    | Main Control Board for 48172                                    | 35       | AS343    | Insulating Column for 48172          | 53       |
| AS310    | Left Side Plate for 48172  | 17       | AS328    | Terminal Block Fixing Plate for 48172                           | 36       | AS344    | Sticker Fixing Plate for 48172       | 54       |
| AS311    | Air Duct Right Assembly for 48172                                  | 18       | AS329    | Terminal Block for 48172  | 37       | AS345    | Silica Gel Heating Plate for 48172   | 55       |