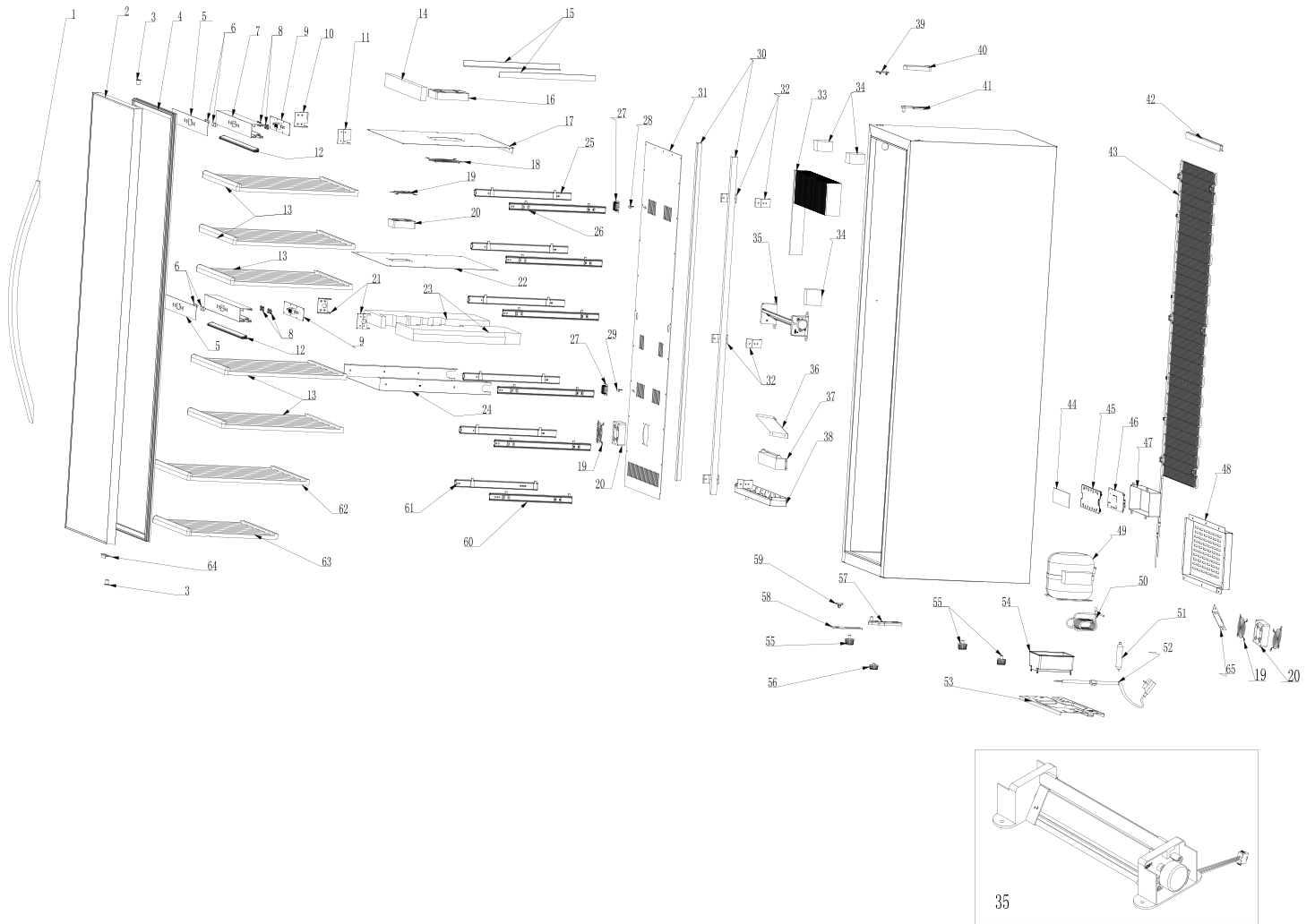


Parts Breakdown

Model WC-CN-0126-DB 48525



Parts Breakdown

Model WC-CN-0126-DB 48525

Item No.	Description	Position	Item No.	Description	Position	Item No.	Description	Position
AS780	Handle Stainless Steel for 48525	1	79755	Bottom Cover (Mid.Board) for 48525	24	AS804	Electric Board Cover for 48525	47
AS781	Door Assembly Full Glass for 48525	2	AS793	Sliding Trace Left-14" for 48525	25	AS805	Compressor Room Cover for 48525	48
79712	Shaft Sleeve for 48525	3	AS794	Sliding Trace Right-14" for 48525	26	AS806	Compressor for 48525	49
AS782	Door Gasket for 48525	4	79700	Sensor Cap for 48525	27	68735	Exhaust Pipe for 48525	50
AS783	Control Panel Sticker-Black for 48525	5	79730	Up-Sensor for 48525	28	68736	Dry Filter for 48525	51
AS784	Button for 48525	6	79749	Down Sensor for 48525	29	AS807	Power Supply Cord for 48525	52
AS785	Electric Box with LED Light Strip for 48525	7	68799	Condenser Strip for 48525	30	79695	Compressor Support Plate for 48525	53
AS786	Button Nut for 48525	8	AS795	Back Ventilation Board for 48525	31	79691	Water Tray for 48525	54
AS787	Display PCB Board for 48525	9	68738	Back Ventilation Board Holder for 48525	32	AS808	Front Foot-15mm for 48525	55
79676	Electric Box Support Left for 48525	10	AS796	Evaporator for 48525	33	79696	Front Foot for 48525	56
68729	Right Support Frame of Upper Electric Box for 48525	11	AS797	Evaporator Sealing Block for 48525	34	79697	Down Hinger+Foot for 48525	57
AS788	LED Light Strip for 48525	12	AS798	Motor General Assembly for 48525	35	AS809	Lock Bracket with Plastic Cushion for 48525	58, 59
AS789	Upper Wood Shelf for 48525	13, 69	79683	PVC Sink for 48525	36	AS810	Sliding Trace Left-12" for 48525	60
79703	Sealing (Froming) for 48525	14	AS799	Heater for 48525	37	AS811	Sliding Trace Right-12" for 48525	61
79705	Fixed Plate for 48525	15	79711	Watershed Plate for 48525	38	AS812	Lower Shelf for 48525	62
AS790	Fan-1 DC12025 for 48525	16	79685	Top Cover for 48525	39	AS813	Bottom Wood Shelf for 48525	63
79752	Top Ventilation Board for 48525	17	79687	Hinge Cover for 48525	40	AM686	Door Limit - Full Glass Door for 48525	64
68732	Fan Cover for 48525	18	79686	Upper Hinger for 48525	41	AS814	Carton Box for 48525	65
AS791	Small Fan Cover for 48525	19	68799	Condenser Strip for 48525	42	AS815	Manual for 48525	66
79701	8025 Fan for 48525	20	AS800	Condenser for 48525	43	AS816	Display Shelf Assembly for 48525	67
79708	Fixation Electrical Box (Down) for 48525	21	AS801	Velcro Tape for 48525	44	AS817	Foldable Shelf for 48525	68
79754	Up Cover (Mid.Board) for 48525	22	AS802	Electric Board Base for 48525	45	AS818	Upright Shelf for 48525	70
AS792	Middle Board Foam for 48525	23	AS803	Electric Board for 48525	46			