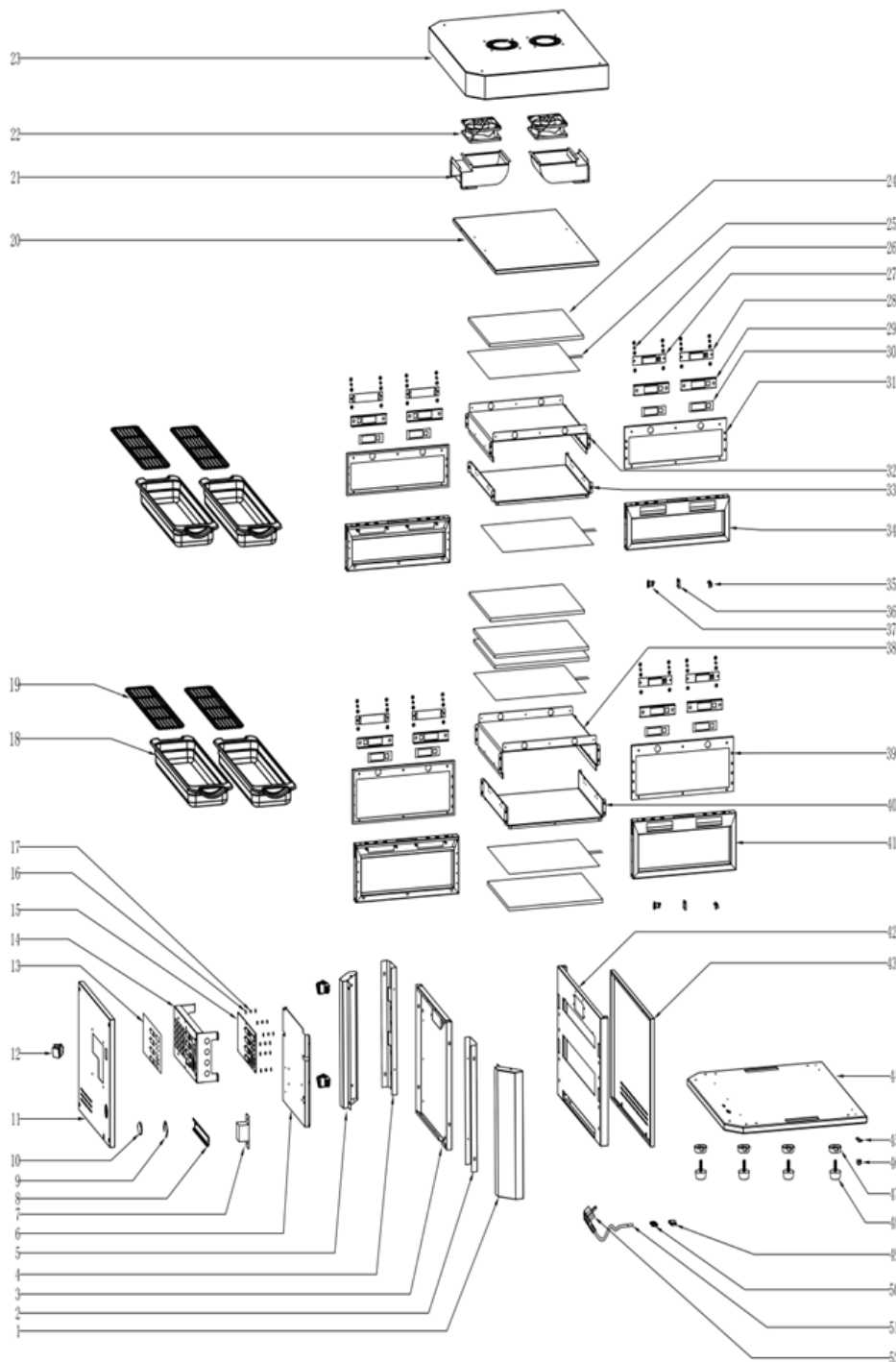


Parts Breakdown

Model FW-CN-0002-V 48548



Parts Breakdown

Model FW-CN-0002-V 48548

| Item No. | Description | Position | Item No. | Description | Position | Item No. | Description | Position |
|----------|---|----------|----------|--------------------------------------|----------|----------|---|----------|
| AU421 | Right Support on Right Side for 48548 | 1 | AU433 | Shelf for 48548 | 19 | 70863 | Thermostat T1M/33 for 48548 | 37 |
| AU422 | Right Pillar on Right Side for 48548 | 2 | AU434 | Wind Shield for 48548 | 20 | AU444 | Channels-A (Bottom) for 48548 | 38 |
| AU423 | Right Pillar Connector for 48548 | 3 | AU435 | Air Duct Assembly for 48548 | 21 | AU445 | Heat Insulation Pad (Bottom) for 48548 | 39 |
| AU424 | Left Pillar on Right Side for 48548 | 4 | AS312 | Fan Motor for 48548 | 22 | AU446 | Channels-B (Bottom) for 48548 | 40 |
| AU425 | Left Support on Right Side for 48548 | 5 | AU436 | Top Cover Plate for 48548 | 23 | AU447 | Channels Fixed Plate (Bottom) for 48548 | 41 |
| AU426 | Computer Version of Fixed Plate (Outside) for 48548 | 6 | AU437 | Insulation for 48548 | 24 | AU448 | Left Pillar Connector for 48548 | 42 |
| AS324 | Transformer for 48548 | 7 | AU438 | Aluminum Foil Heater for 48548 | 25 | AU449 | Left Plate for 48548 | 43 |
| AS330 | Sliding Rail for 48548 | 8 | AS343 | Insulating Column for 48548 | 26 | AU450 | Upper Connection for 48548 | 44 |
| AS318 | Display Fixed Plate Assembly Right (Top) for 48548 | 9 | AS341 | Display Board (W2) for 48548 | 27 | AD870 | Fixed Plate for 48548 | 45 |
| AU427 | Loudspeaker for 48548 | 10 | AS332 | Display Board (W1) for 48548 | 28 | AD869 | Equipotential Grounding Block for 48548 | 46 |
| AU428 | Right Plate for 48548 | 11 | AS344 | Sticker Fixing Plate for 48548 | 29 | AS303 | Foot Pad for 48548 | 47 |
| AR485 | Switch (Higher Amp) for 48548 | 12 | AU439 | Tags (Window Display) for 48548 | 30 | AS301 | Rubber Feet for 48548 | 48 |
| AU429 | Tags (Main Control Board) for 48548 | 13 | AU440 | Heat Insulation Pad (Top) for 48548 | 31 | 61245 | Wire Clamp Cover for 48548 | 49 |
| AS326 | Computer Version of Fixed Plate for 48548 | 14 | AU441 | Channels-A (Top) for 48548 | 32 | 61246 | Wire Clip Holder for 48548 | 50 |
| AU430 | Main Control Board for 48548 | 15 | AU442 | Channels-B (Top) for 48548 | 33 | AK995 | Power Line for 48548 | 51 |
| AS342 | Insulating Washer for 48548 | 16 | AU443 | Channels Fixed Plate (Top) for 48548 | 34 | 67691 | Power Cord for 48548 | 52 |
| AU431 | Insulating Column(5) for 48548 | 17 | AS338 | Temperature Sensor for 48548 | 35 | | | |
| AU432 | Pan for 48548 | 18 | AS339 | Probe Fixter for 48548 | 36 | | | |