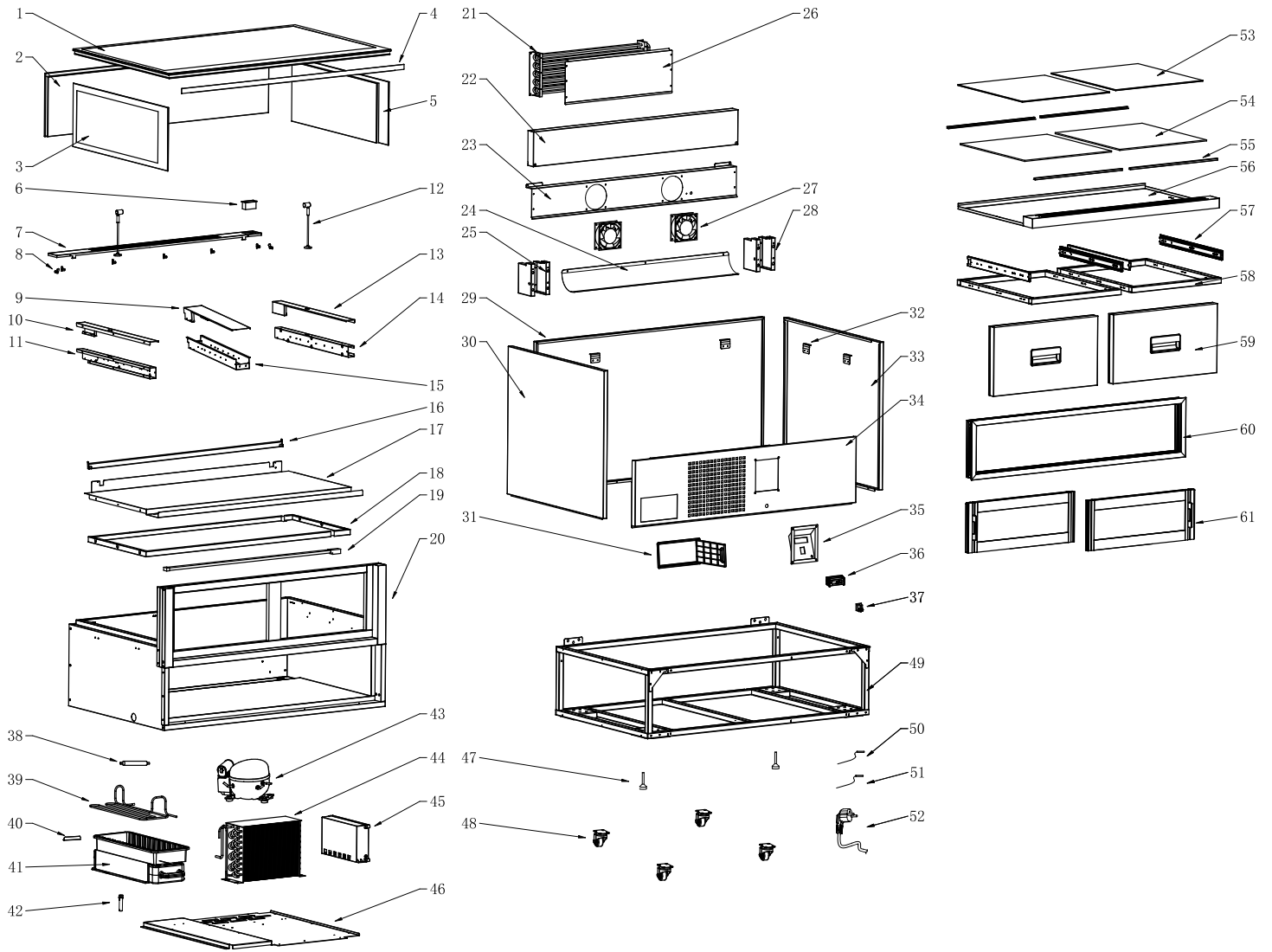


Parts Breakdown

Model RE-CN-0048 48562



Parts Breakdown

Model RE-CN-0048 48562

Item No.	Description	Position	Item No.	Description	Position	Item No.	Description	Position
AT841	Top Glass for 48562	1	AT854	Air Deflector for 48562	24	AT805	Water Level Monitoring Sleeve for 48562	42
AT842	Front Glass for 48562	2	AT782	Evaporator Right Windshield for 48562	25	AT806	Compressor for 48562	43
AT762	Right Glass for 48562	3	AT855	Evaporator Fixing Plate for 48562	26	AL812	Condenser for 48562	44
AT843	Top Glass Trim for 48562	4	AR383	Fan Motor for 48562	27	AL828	Condenser Fan for 48562	44
AT764	Left Glass for 48562	5	AT784	Evaporator Left Windshield for 48562	28	AL827	Flange for 48562	44
AL835	Front Display for 48562	6	AT856	Front Frame for 48562	29	AR527	Motor for 48562	44
AT844	Air Outlet for 48562	7	AT786	Right Frame for 48562	30	AT807	Junction Box Bottom for 48562	45
AT766	Intel and Outlet Limit for 48562	8	AT787	Water Box Door for 48562	31	AT808	Junction Box Cover for 48562	45
AT845	Pull Door Track Trim Piece for 48562	9	AT788	Water Box Door Body for 48562	31	AT809	Digital Control for 48562	45
AT767	Pull Door Track Right Trim Piece for 48562	10	AT789	Frame Support for 48562	32	AT810	Switch for 48562	45
AT768	Pull Door Track Right Fixed Plate for 48562	11	AT790	Left Frame for 48562	33	AT811	Base Plate for 48562	46
AT769	LED Spotlights for 48562	12	AT857	Rear Lower Frame for 48562	34	AR334	Adjustable Foot for 48562	47
AT770	Pull Door Track Left Trim Piece for 48562	13	AT792	Switch Panel for 48562	35	AL824	Casters for 48562	48
AT771	Pull Door Track Left Fixed Plate for 48562	14	AR356	Display for 48562	36	AT815	Box Base Connector for 48562	49
AT846	Pull Door Track Fixed Plate for 48562	15	AL834	Switch for 48562	37	AT858	Base Parts for 48562	49
AT847	Pull Door Track Support for 48562	16	AT793	Dry Filter for 48562	38	AT813	Box Base Left Connector for 48562	49
AT848	Top Trim Cover for 48562	17	AT794	High Pressure Vaporized Copper Pipe for 48562	39	AT814	Box Base Right Connector for 48562	49
AT849	Top Trim for 48562	18	AT795	Water Storage Box Baffle for 48562	40	AR273	Temp Probe for 48562	50
AL791	LED for 48562	19	AT800	Water Box Left Fixing Plate for 48562	41	AR274	Overheating Probe for 48562	51
AT850	Box Foam Assembly for 48562	20	AT801	Water Box Right Fixing Plate for 48562	41	AT816	American Semi-Finished Power Cord for 48562	52
AR345	Nut for 48562	20	AT802	Water Box Cover Plate for 48562	41	AT859	Light Guide Plate Glass for 48562	53
AT777	Drain Pipe Clamp for 48562	20	AT796	Water Box for 48562	41	AT860	Light Guide Plate for 48562	54
AT776	Drain Pipe Connection for 48562	20	AT798	Water Storage Box for 48562	41	AT861	Light Guide Plate Light Bar Fastener for 48562	55
AL817	Water Leakage Pipe for 48562	20	AT797	Cover Plate for 48562	41	AT862	LED for 48562	55
AT851	Evaporator for 48562	21	AT799	Magnetic Door Contact for 48562	41	AT863	Light Guide Plate Placement Plate for 48562	56
AT852	Evaporator Front Trim Plate for 48562	22	AT803	Water Level Monitoring Pipe for 48562	42	AT822	Sliding Rail for 48562	57
AT853	Motor Fixing Plate for 48562	23	AT804	Water Level Monitoring Diversion Device for 48562	42	AT864	Door Slide Rail Assembly for 48562	58

Parts Breakdown

Model **RE-CN-0048** 48562

Item No.	Description	Position	Item No.	Description	Position	Item No.	Description	Position
AT865	Door Gasket for 48562	59	AT866	Upper and Lower Door Beam for 48562	60	AT867	Upper and Lower Door Frame for 48562	61
AT826	Sliding Door Left Trim for 48562	59	AT829	Left and Right Door Beam for 48562	60	AT835	Side Door Frame for 48562	61
AT827	Sliding Door Right Trim for 48562	59	AT830	Door Frame Block for 48562	60	AT836	Side Handle for 48562	61
AT832	Door Frame Connector for 48562	60	AT839	Gate Magnetic Strip for 48562	61	AT868	Door Glass for 48562	61
AT833	Door Frame Fixed Part for 48562	60	AT838	Handle for 48562	61			
AT831	Door Suction Bar for 48562	60	AT837	Pulley for 48562	61			