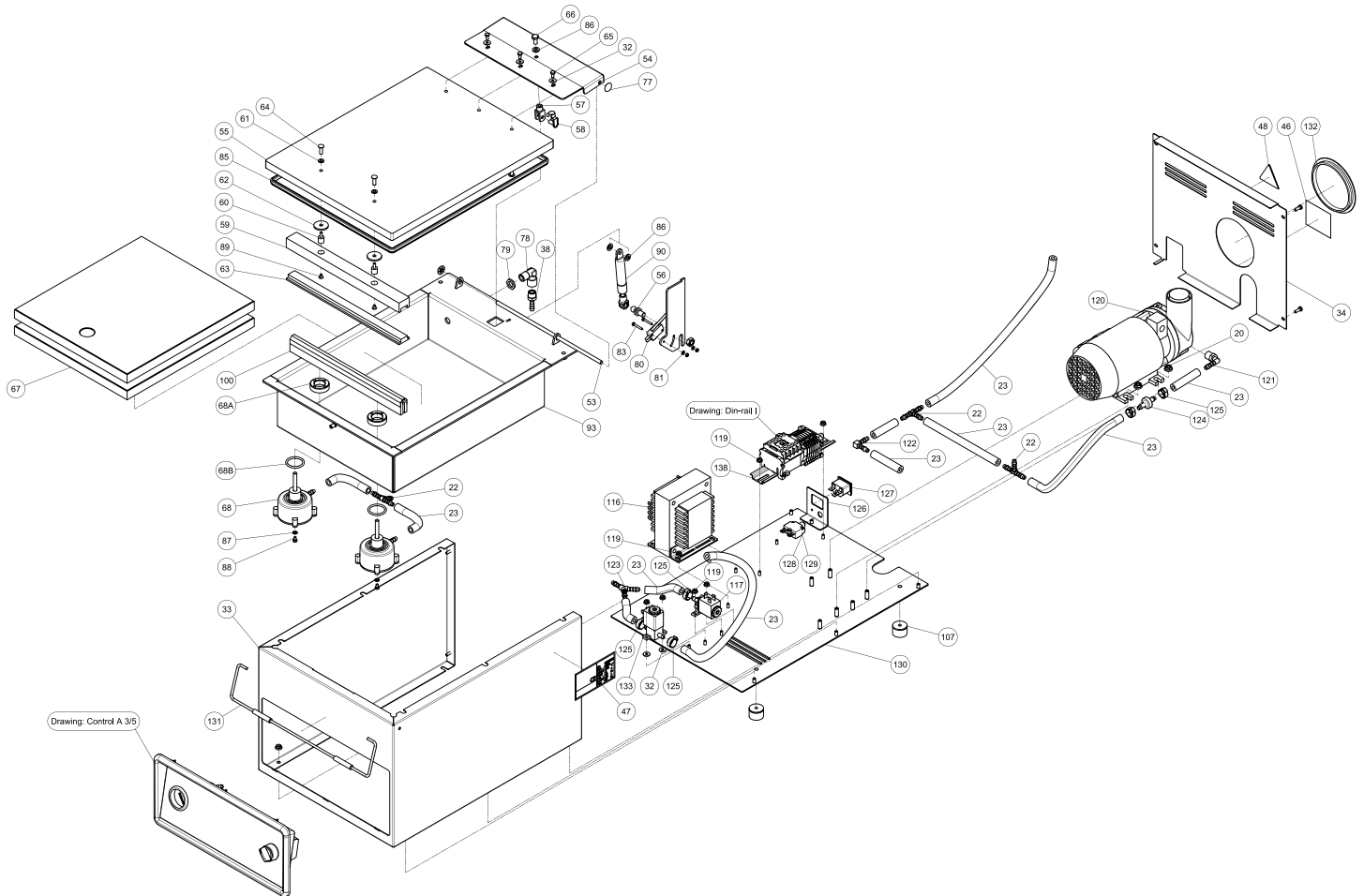


Parts Breakdown

Model VP-NL-0008-S 50007





Parts Breakdown

Model VP-NL-0008-S 50007

Item No.	Description	Position	Item No.	Description	Position	Item No.	Description	Position
27781	Hexagon Flangenut M6 Din6923 A2 for 50007	20	30004	Hexagon Screw M4x8 Din 933 A2 for 50007	65	15718	Decompress Valve 303500 for 50007	117
27836	Connecting Piece T-Piece 6mm for 50007	22	30005	Hexagon Screw M6x12 Din933 A2 for 50007	66	35041	Hose Clip Klemfa 12.8x14.8mm for 50007	119
27837	Hose (O2) Drago 6x13 for 50007	23	30006	Insert Plate 120/140-ST for 50007	67	30014	Vacuum Pump 004-316 220/240-1-50/60 for 50007	120
34998	Flat Washer M4 D9021 A2 for 50007	32	30007	Seal Cylinder 305500 for 50007	68	30015	Square Hose Coupling 1/4"x6 Ext. for 50007	121
29995	Bottom Section 120/140-ST for 50007	33	30007	Seal Cylinder 305500 for 50007	68A	30016	Square Connect Piece 6mm for 50007	122
29996	Backplate 120/140-ST for 50007	34	30007	Seal Cylinder 305500 for 50007	68B	30017	Y Connecting Piece 6mm for 50007	123
29997	Brass Hose Coupling 1/4"x6 Ext. for 50007	38	27810	Spring Ring with Cover 6mm for 50007	77	63991	Non-Return Valve 8mm for 50007	124
27796	Sticker Oil for 50007	46	30009	Elbow 1/4" Int/Ext Brass for 50007	78	30019	Hose Clip Klemfa 12.8x14.8mm for 50007	125
27794	Sticker Machine Type for 50007	47	30010	Brass Nut 1/4" for 50007	79	30020	Holder Net Entree STF-42 for 50007	126
27795	Sticker Tension Triangle for 50007	48	15775	Micro Switch MV3003L for 50007	80	27791	Net Entree Male Snap-In STF42 for 50007	127
29998	Hinge Bearing ST.ST. 6x255 for 50007	53	27822	Castle Washer M3 for 50007	81	30021	Thermal Fuse 4A for 50007	128
29999	Hinge Part for 50007	54	30011	Slotted Cheese Head Screw M3x20 A2 Din84 for 50007	83	30022	Thermal Fuse 8A for 50007	129
30000	Vacuum Cover 120/140-ST for 50007	55	35291	Silicone Profile Cover 5.5mm L=1MTR for 50007	85	30023	Bottom Plate 120/140-ST for 50007	130
30001	Balltap 03/ACR L=12 for 50007	56	27824	Castle Washer M6 for 50007	86	30024	Lid Locker 120/140-ST for 50007	131
27808	Adjusting Fork for 50007	57	27829	V-Ring Vertand M4 DIN 6798-A for 50007	87	30025	Closing Plug GPN 120/140-ST for 50007	132
27809	Adjusting Fork Closing Pin for 50007	58	27830	Slotted Cheese Head Screw M4x6 A2 Din84 for 50007	88	15717	3-Way Valve 500260 for 50007	133
30002	Silicon Holder 120/140-ST for 50007	59	30012	Slott.Countersunk Head Screw M4x6 Din963 A2 for 50007	89	27814	Hexagon Nut M8 Din934 A2 for 50007	134
35085	Vibration Absorber Foot for 50007	60	17253	Lid Shock Cylinder for 50007	90	27823	Hexagon Nut M3 Din934 A2 for 50007	135
27804	Rubber Washer 10x5x1 for 50007	61	15884	Sealbeam Standard Compact Complete for 50007	100	30026	Slott.Rais.Counter.Head Screw M4x12 Din7985 A2 for 50007	136
15853	Ring Nylon (33-5) for 50007	62	35063	Vibration Absorber Foot for 50007	107	27839	Assembly Control A 3/5 for 50007	137
15842	Silicone T-Profil 40 Shore One Meter for 50007	63	27782	Hexagon Flangenut M5 Din6923 A2 for 50007	108	30028	Din-Conductor I 220-240V-1~ Assemb. for 50007	138
15701	Book Screw Brass 350/15 for 50007	64	35039	Y Connecting Piece 6mm for 50007	116			