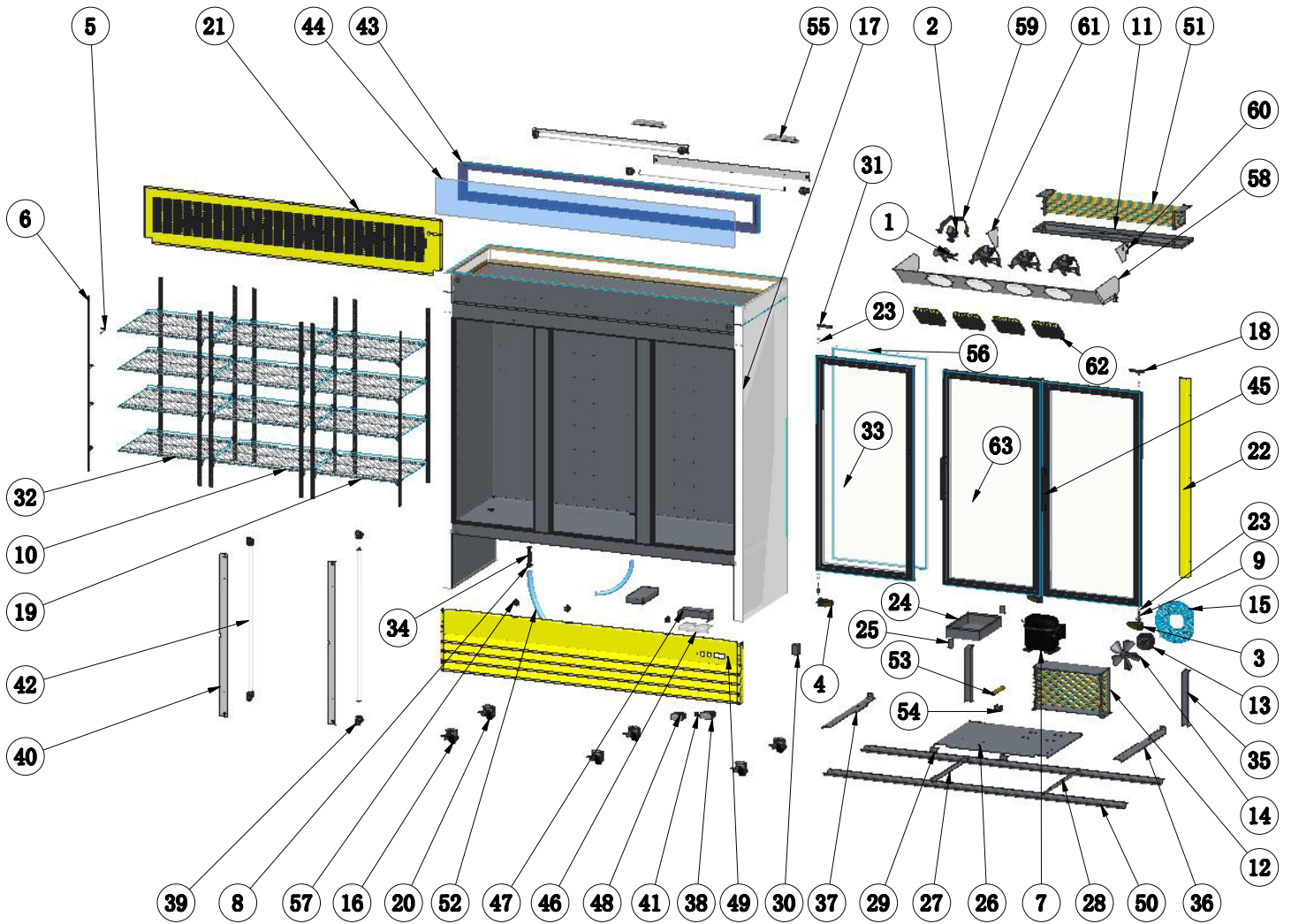


Parts Breakdown

Model RE-CN-0052-HC-BK 51052



Parts Breakdown

Model RE-CN-0052-HC-BK 51052

Item No.	Description	Position	Item No.	Description	Position	Item No.	Description	Position
61219	Evaporator Fan Blade V154/22 before March 2021 for 51052	1	26247	Caster without Brake for 51052	20	AA837	Light Box Plate for 51052	44
AA764	Condenser/Evaporator Fan Motor Blade after March 2021 for 51052	1	AE918	Back Grill for 51052	21	AA695	Glass Door Handle for 51052	45
AS176	Evaporator Fan Motor before March 2021 for 51052	2	AE919	Air Pipe Protection Board for 51052	22	AE926	Thermostat Installation Plate for 51052	46
AG448	Evaporator Fan Motor after March 2021 for 51052	2	AA715	Axis Cover for 51052	23	AB975	Waterproof Cover of Thermostat for 51052	47
AA807	Bottom Right Hinge Holder for 51052	3	AB970	Outer Drain Pan for 51052	24	AA124	Power Switch for 51052	48
AA808	Bottom Left Hinge Holder for 51052	4	AA304	Installation Board Limited Block for 51052	25, 29	AN144	Front Grill for 51052	49
26884	K Clip for 51052	5	AE920	Installation Board for 51052	26	AE928	Caster Supporter for 51052	50
AA809	K Strip for 51052	6	AE894	Right Rail for Installation Board for 51052	27	AA842	Evaporator before March 2021 for 51052	51
AS739	Compressor NEU6214U before March 2021 for 51052	7	AE892	Left Rail for Installation Board for 51052	28	26372	Evaporator after March 2021 for 51052	51
AG573	Compressor after March 2021 for 51052	7	AB974	Handle for Installation Board for 51052	30	AA216	Drain Tube for 51052	52
AA687	Drain Pipe Cover for 51052	8	AE921	Upper Left Hinge Holder for 51052	31	AB594	Filter for 51052	53
AA810	Bottom Hinge Axis for 51052	9	AA830	Left Glass Door for 51052	33	AB595	Filter Fixer for 51052	54
AA811	Middle Shelf for 51052	10	AA686	Plastic Drain Pipe with Fixer for 51052	34	AA787	LED Power Supply before March 2021 for 51052	55
AE916	Inner Drain Pan for 51052	11	AE922	Supporting Board for 51052	35	AS740	Power Supply LPV-60-12/ After Processing-Input: Female YL Terminal, Output: Male YL Terminal after March 2021 for 51052	55
AA300	Condenser before March 2021 for 51052	12	AE923	Right Connecting Board for Caster for 51052	36	AE929	Gasket for 51052	56
AH690	Condenser after March 2021 for 51052	12	AE924	Left Connecting Board for Caster for 51052	37	AA844	Door Switch for 51052	57
AS738	Fan Motor ECM7120 AC115/60Hz 1550rpm 20W before March 2021 for 51052	13	27185	Carel Temperature Controller PYGX1Z0501 before March 2021 for 51052	38	AE930	Evaporator Cover for 51052	58
AA813	Condenser Fan Motor after March 2021 for 51052	13	AI375	Dixell Temperature Controller after March 2021 for 51052	38	AA757	Evaporator Fan Motor Bracket for 51052	59
AA814	Condenser Fan Motor Blade for 51052	14	AE925	Fixer for Inner LED Light for 51052	39	AB987	Right End Plate for Evaporator for 51052	60
AB077	Condenser Fan Cover for 51052	15	AA835	LED Inside Cabinet for 51052	40	AB993	Left End Plate for Evaporator for 51052	61
26246	Caster with Brake for 51052	16	AA362	LED Light Switch for 51052	41	AA710	Evaporator Fan Motor Cover for 51052	62
AA857	Upper Right Hinge Holder for 51052	18	AA722	LED Light for 51052	42	AE931	Right Glass Door for 51052	63
AE917	Shelf for 51052	19, 32	AA836	Light Box Frame for 51052	43			