

## Aurora Undercounter Freezers, Stainless Steel

ITEM: 59053  
MODEL: FR-CN-0686E-HC

59055  
FR-CN-1219E-HC

59092  
FR-CN-1529E-HC



27" wide  
59053



48" wide  
59055

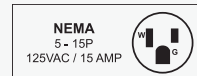
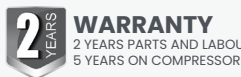
60" wide  
59092

**The perfect solution to add cold storage space for frozen products and ingredients conveniently within reach.**

This undercounter freezer is perfect for cold food storage operations while saving space. Slide it under a counter or work table to utilize its space for storing chilled items. Its durable stainless steel construction is designed to endure frequent use, and its user-friendly controls reduce the time spent adjusting and monitoring settings for peak performance. Additionally, it uses Hydro-carbon R290 refrigerant, which is environmentally friendly and more efficient.

**FEATURES:**

- Stainless steel interior and exterior
- Refrigeration system keeps food at safe
- Self-closing doors with 90-degree stay-open feature
- Adjustable heavy-duty PVC coated shelves
- Digital control system makes it easy to adjust temperature set point and defrost frequency
- Hydro-carbon R290 refrigerant, which is environmentally friendly and more efficient

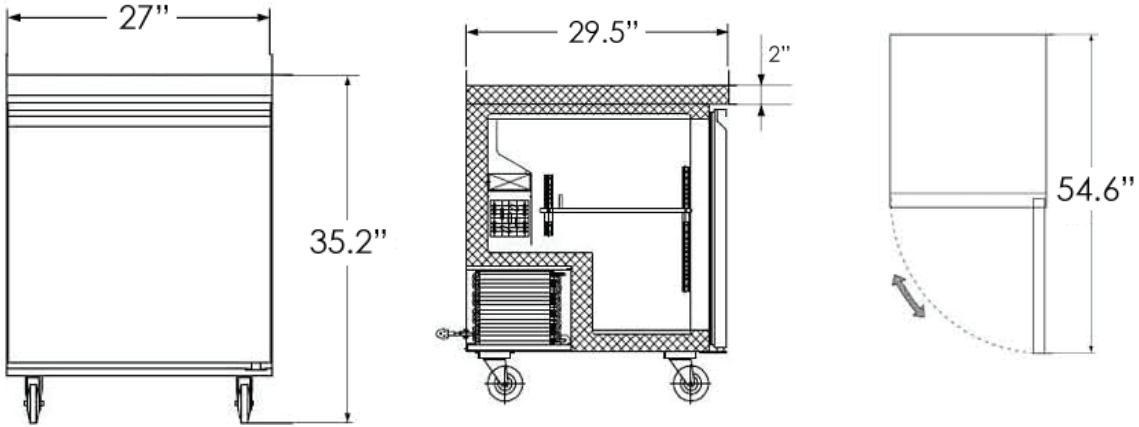


## TECHNICAL SPECIFICATION

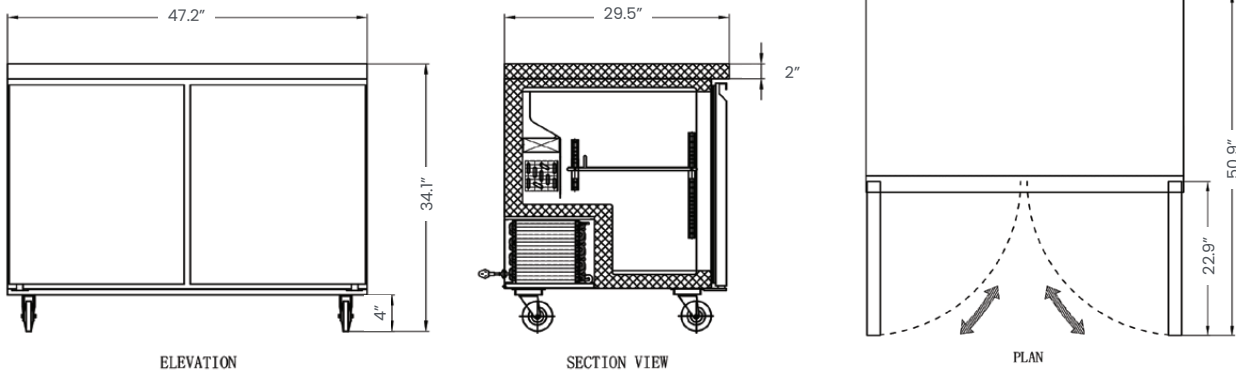
Features	27" wide with 6.3 cu.ft. ( 177 L) Capacity	48" wide with 11 cu. ft. (320 L) Capacity	60" wide with 15 cu. ft. (425 L) Capacity
Item	59053	59055	59092
Model	FR-CN-0686E-HC	FR-CN-1219E-HC	FR-CN-1529E-HC
Capacity	6.3 cu.ft. ( 177 L)	11.3 cu.ft (320 L)	15 cu. ft. (425 L)
Number of Doors	1 Swing Door - Solid Door	2 Swing Doors - Solid Doors	
Self-closing Door	Yes		
Number of Shelves	1	2	
Shelf Capacity (kg/pc)	44 lb. (20 kg.)	88lb. (40kg.)	
Shelf Material	Plastic Coated Steel		
Number of Casters	Yes (4)		
Power	1/6 hp	352 W	345 W
Amps	1.9 A	3.72 A	4.5 A
Electrical	110-120V / 60Hz / 1Ph		
Temperature Controller	Digital		
Temperature Range	-18 to -22°C (-0 to -8°F)		
Refrigerant:	R290		
Insulation Material	Cyclopentane		
Cooling System	Ventilated		
Defrosting	Automatic		
Interior Dimensions (WDH)	22.2" x 22.8" x 23.5" (565 x 580 x 597 mm)	42.6" x 19.8" x 23.5" (1083 x 504 x 597 mm)	55.6" x 19.84" x 23.5" (1413 x 504 x 597 mm)
Net Weight	169lb. (77 kg.)	214 lb. (97 kg.)	254 lb. (115 kg.)
Net Dimensions (WDH)	27" x 29.5" x 35.2" (685 x 750 x 895 mm)	47.2" x 29.5" x 35.2" (1200 x 750 x 895 mm)	60.2"x 29.5" x 38.8" (1529 x 750 x 985 mm)
Gross Weight	220 lb. (100 kg.)	275.6 lb. (125 kg.)	324 lb. (147 kg.)
Gross Dimensions (WDH)	30" x 33 " x 39" (770 x 830 x 980 mm)	50" x 32" x 38" (1270 x 820 x 970 mm)	74" x 32" x 38" (1600 x 820 x 970 mm)
Plug Type	NEMA 5-15P		

\* This equipment is intended for indoor environment using where ambient temperature do not exceed 24°C(75°F) & 55% relative humidity

**TECHNICAL DRAWING**



**27" wide  
59053**

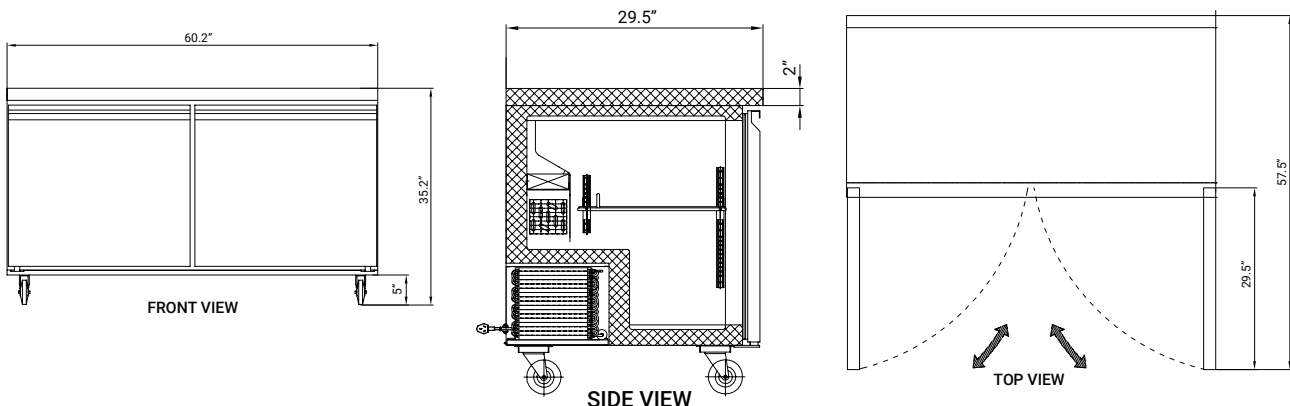


**ELEVATION**

**SECTION VIEW**

**PLAN**

**48" wide  
59055**



**FRONT VIEW**

**SIDE VIEW**

**TOP VIEW**

**60" wide  
59092**