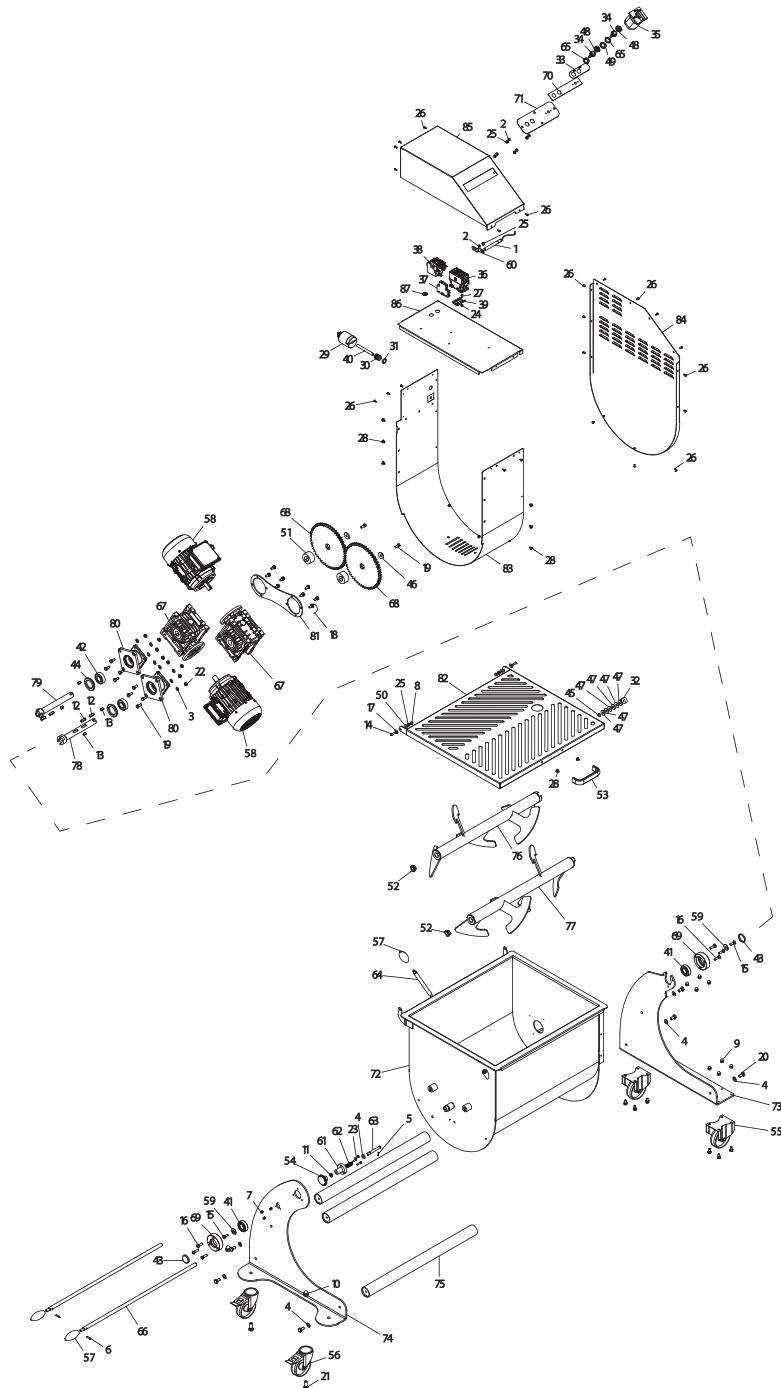


PARTS BREAKDOWN

ITEM	MODEL
48057	MM-IT-0120-ETL



PARTS BREAKDOWN

ITEM	MODEL
48057	MM-IT-0120-ETL

Item No.	Description	Position	Item No.	Description	Position	Item No.	Description	Position
AH077	Magnetic Sensor Head UL TA for 48057	1	62667	Flathead CSK Screw Din 963 M5 x 25 for 48057	23	AP726	Round Sensor L=2000 S02020-2400IX for 48057	45
62651	Blind Nut Din 1587 M 12 for 48057	1	66634	Self-Locking Nut ES Din 982 M 4 High for 48057	24	61610	Zinc Washer M8x30 H4 for 48057	46
62643	Flat Washer Din 125 D 6 for 48057	2	62668	Self-Lock Nut ES Din 982 M 6 High for 48057	25	AP727	Nylon Washer D8,4 D25 H2 for 48057	47
62644	Flat Washer Din 125 D 8 for 48057	3	62669	Poeliers M 4x10 Screw for 48057	26	AN674	Silicone Capsule x Puls. Steel for 48057	48
62645	Flat Washer Din 125 D 10 for 48057	4	66633	Screw Poeliers M4x12 for 48057	27	AN675	Dist. 19.1x30x2 Black PE x Puls. Stop for 48057	49
62646	Elastic Pin Din 1481 3x18 for 48057	5	60081	Screw Poeliers M 6x10 for 48057	28	AN183	Dist. Plast 18x6,4x3 Micro ME-IP 10-20 for 48057	50
62647	Elastic Pin Din 1481 5x20 for 48057	6	AP736	Plug Hubbel UL 20A 230/TF CSA for 48057	29	61607	Bushing ME 80 Evo for 48057	51
62648	Blind Nut Din 1587 M5 for 48057	7	61604	Strain Relief + Nut for 48057	30	62621	Bush Flang. JFM-1622-12 TCM-ME for 48057	52
61583	Nut Din 1587 M 6 for 48057	8	61603	Nut Ott.Nich.PG 11 for 48057	31	18961	Handle - Old Style/Large (L-132mm) for 48057	53
62650	P Nut Din 1587 M8 for 48057	9	AN181	Round Magnet Diam.25 for 48057	32	79656	Knob for Fixing Container IP 50-100 for 48057	54
62652	Nut ES. Din 439 M 10 Low (10 pcs/pk) for 48057	11	AM948	Key Pad IS-SO for 48057	33	61556	Stainless Steel Non-Swivel.Caster D.100 for 48057	55
62653	Feathers Din 6885 / A 8x7x28 for 48057	12	AN355	Stainless Steel Button MSM-19 UL Cut Ind for 48057	34	61579	Mobile Wheel with Brake D 100 C/ Perno for 48057	56
62654	Feathers Din 6885 / AB 8x7x16 for 48057	13	AP102	Rotary Switch 25Amp for 48057	35	78634	Knob IP80/ IP120 for 48057	57
62655	Screw TBEI ISO 7380 M 6x25 for 48057	14	39667	Remote Control Board AF 26-30-00-13 110/230 60Hz for 48057	36	AP738	Motor M80 HP 1,5 B14 4P 400/60 UL for 48057	58
AN185	Screw TSPEI Din 7991 M 8x25 for 48057	15	39668	Contacteur Aus Lat x AF 26-30-00-13 ABB for 48057	37	61590	Washer SO 1650 Inox for 48057	59
62658	Screw TSPEI Din 7991 M 8x30 for 48057	16	66632	Terminal Protection 13-16A ABB TF 42-16 for 48057	38	AN385	Supp. Micro Bending Micro 100W 3A UL for 48057	60
62660	Washer F Wide Din 9021 D 6x18 for 48057	17	66635	Guide Din Omega H.7mm L= 50mm for 48057	39	61569	Boat Stops Crade for 48057	61
62662	Screw TE Din 933 M8x16 T.F. for 48057	18	AP737	Cable AWG 4 x 14 SJTO 300V 105°C for 48057	40	61571	Spring for 48057	62
62663	X.Screw Din 933 M8 x 20 for 48057	19	61586	Bearing 6205 ZZ for 48057	41	61570	Pin for 48057	63
62664	Screw TE Din 933 M 10x20 T.F. for 48057	20	61597	Bearing Reg. SP 7205 ME 80 Evo for 48057	42	61564	Lever Rod for Container Overturning for 48057	64
62665	Screw TE Din 933 M 12x30 T.F. for 48057	21	61589	Cap 40/7/C Pulley 1C S01650 for 48057	43	AN676	Nut x Silic Cover. Puls. Steel for 48057	65
62666	Hex.Nut Din 934 M8 for 48057	22	61596	Gasket 40-62-7 for 48057	44	61591	Paddle Rod IX ME 120 kg for 48057	66

PARTS BREAKDOWN

ITEM	MODEL
48057	MM-IT-0120-ETL

Item No.	Description	Position	Item No.	Description	Position	Item No.	Description	Position
61593	Gear Box MRV 063 B14 R=49 for 48057	67	61599	Base SX ME 120 Evo for 48057	74	61606	Bracket Lock Gear ME 120 Evo for 48057	81
61605	Ring Gear ME 80 Evo for 48057	68	61601	Tube Union Bases ME 120 Evo for 48057	75	AP739	Basin Cover ME 120 Evo EL for 48057	82
61585	Shaft Support SX Evo for 48057	69	AC070	Female Paddle for 48057	76	AP740	Motor Carter Band ME 120 Evo EL/ETL for 48057	83
AP733	Sheet 2 Puls. IX ME 80 Evo EL/ETL for 48057	70	AC146	Male Paddle for 48057	77	AP741	Motor Carter ME 120 Evo EL/ETL for 48057	84
AP734	Sheet Int 2 Puls IX ME 80 Evo EL/ETL for 48057	71	61595	Transc. Pin Femm L = 220 M and 120 Evo for 48057	78	AP742	Motor Carter Shell ME 120 Evo EL/ETL for 48057	85
61577	Cradle Inox ME 120 Evo for 48057	72	61598	Transc. Pin Masc L = 220 ME 120 Evo for 48057	79	AP743	Sheet Imp. Ele/Mot. ME 120 Evo EL/ETL for 48057	86
61600	Base DX Rid. ME 120 Evo for 48057	73	AE734	Flange Motorid for 48057	80	AM961	Ground Warning Label Diam.22 for 48057	87