



# Desktop Refrigeration Displays

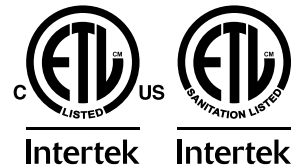
Models RS-CN-0078-S, 0078-D

Items 25826, 25827

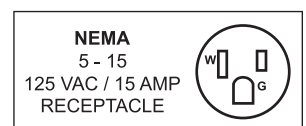
## Instruction Manual



*Revised - 08/19/2022*



Toll Free: 1-800-465-0234  
Fax: 905-607-0234  
Email: [service@omcan.com](mailto:service@omcan.com)  
[www.omcan.com](http://www.omcan.com)



# ***Table of Contents***

Model RS-CN-0078-S / Model RS-CN-0078-D

---

<b>Section</b>	<b>Page</b>
Disclaimer -----	3
General Information -----	4 - 5
Safety and Warranty -----	5 - 7
Technical Specifications -----	7
Handling and Assembly -----	8
Operation -----	8 - 9
Maintenance -----	9 - 10
Troubleshooting -----	10
Parts Breakdown -----	11 - 14
Electrical Schematics -----	15
Notes -----	16 - 18
Warranty Registration -----	19

## *Disclaimer*

---

***OMCAN IS NOT RESPONSIBLE FOR ANY DAMAGES DUE TO WATER LEAKS. WARRANTY FOR WATER LEAKS IS VOID IF THE AMBIENT ROOM TEMPERATURE EXCEEDS 75°F AND 55% RELATIVE HUMIDITY, AND THE APPLIANCE DRAIN IS NOT CONNECTED DIRECTLY TO A FLOOR DRAIN.***

# ***General Information***

---

**Omcan Manufacturing and Distributing Company Inc., Food Machinery of America, Inc. dba Omcan and Omcan Inc. are not responsible for any harm or injury caused due to any person's improper or negligent use of this equipment. The product shall only be operated by someone over the age of 18, of sound mind, and not under the influence of any drugs or alcohol, who has been trained in the correct operation of this machine, and is wearing authorized, proper safety clothing. Any modification to the machine voids any warranty, and may cause harm to individuals using the machine or in the vicinity of the machine while in operation.**

## **CHECK PACKAGE UPON ARRIVAL**

Upon receipt of an Omcan shipment please inspect for external damage. If no damage is evident on the external packaging, open carton to ensure all ordered items are within the box, and there is no concealed damage to the machine. If the package has suffered rough handling, bumps or damage (visible or concealed), please note it on the bill of lading before accepting the delivery and contact Omcan within 24 hours, so we may initiate a claim with the carrier. A detailed report on the extent of the damage caused to the machine must be filled out within three days, from the delivery date shown in the shipping documents. Omcan has no recourse for damaged products that were shipped collect or third party.

**Before operating any equipment, always read and familiarize yourself with all operation and safety instructions.**

**Omcan would like to thank you for purchasing this machine. It's of the utmost importance to save these instructions for future reference. Also save the original box and packaging for shipping the equipment if servicing or returning of the machine is required.**

---

**Omcan Fabrication et distribution Compagnie Limitée et Food Machinery d'Amérique, dba Omcan et Omcan Inc. ne sont pas responsables de tout dommage ou blessure causé du fait que toute personne ait utilisé cet équipement de façon irrégulière. Le produit ne doit être exploité que par quelqu'un de plus de 18 ans, sain d'esprit, et pas sous l'influence d'une drogue ou d'alcool, qui a été formé pour utiliser cette machine correctement, et est vêtu de vêtements de sécurité appropriés. Toute modification de la machine annule toute garantie, et peut causer un préjudice à des personnes utilisant la machine ou des personnes à proximité de la machine pendant son fonctionnement.**

## **VÉRIFIEZ LE COLIS DÈS RÉCEPTION**

Dès réception d'une expédition d'Omcan veuillez inspecter pour dommages externes. Si aucun dommage n'est visible sur l'emballage externe, ouvrez le carton afin de s'assurer que tous les éléments commandés sont dans la boîte, et il n'y a aucun dommage dissimulé à la machine. Si le colis n'a subi aucune mauvaises manipulations, de bosses ou de dommages (visible ou cachée), notez-le sur le bond de livraison avant d'accepter la livraison et contactez Omcan dans les 24 heures qui suivent, pour que nous puissions engager une réclamation auprès du transporteur. Un rapport détaillé sur l'étendue des dommages causés à la machine doit être rempli dans un délai de trois jours, à compter de la date de livraison indiquée dans les documents d'expédition. Omcan n'a aucun droit de recours pour les produits endommagés qui ont été expédiés ou cueilli par un tiers transporteur.



# General Information

---

Avant d'utiliser n'importe quel équipement, toujours lire et vous familiariser avec toutes les opérations et les consignes de sécurité.

Omcan voudrais vous remercier d'avoir choisi cette machine. Il est primordial de conserver ces instructions pour une référence ultérieure. Également conservez la boîte originale et l'emballage pour l'expédition de l'équipement si l'entretien ou le retour de la machine est nécessaire.

---

Omcan Empresa De Fabricacion Y Distribucion Inc. Y Maquinaria De Alimentos De America, Inc. dba Omcan y Omcan Inc. no son responsables de ningun daño o perjuicio causado por cualquier persona inadecuada o el uso descuidado de este equipo. El producto solo podra ser operado por una persona mayor de 18 años, en su sano juicio y no bajo alguna influencia de droga o alcohol, y que este ha sido entrenado en el correcto funcionamiento de esta máquina, y ésta usando ropa apropiada y autorizada. Cualquier modificación a la máquina anula la garantía y puede causar daños a las personas usando la máquina mientras esta en el funcionamiento.

## REVISE EL PAQUETE A SU LLEGADA

Tras la recepcion de un envio Omcan favor inspeccionar daños externos. Si no hay daños evidentes en el empaque exterior, Habra el carton para asegurarse que todos los articulos solicitados estén dentro de la caja y no encuentre daños ocultos en la máquina. Si el paquete ha sufrido un manejo de poco cuidado, golpes o daños (visible o oculto) por favor anote en la factura antes de aceptar la entrega y contacte Omcan dentro de las 24 horas, de modo que podamos iniciar una reclamación con la compañía. Un informe detallado sobre los daños causados a la máquina debe ser llenado en el plazo de tres días, desde la fecha de entrega que se muestra en los documentos de envío. Omcan no tiene ningun recurso por productos dañados que se enviaron a recoger por terceros.

Antes de utilizar cualquier equipo, siempre lea y familiarizarse con todas las instrucciones de funcionamiento y seguridad.

Omcan le gustaría darle las gracias por la compra de esta máquina. Es de la mayor importancia para salvar estas instrucciones para futuras consultas. Además, guarda la caja original y el embalaje para el envío del equipo si servicio técnico o devolución de la máquina que se requiere.

# Safety and Warranty

---

## Cautions:

- Minimize the time with the door open, and reduce opening and closing frequently.
- Never block the air suction inlet.
- Keep air circulation and refrigeration capability.
- Do not overfill the unit or it may hinder its operation.
- Adjust the rack height for proper food storage.

# ***Safety and Warranty***

---

## **Use and Caution:**

- Ensure to cool hot food before placing it in the refrigerator.
- Only trained technicians should repair damaged power cables with special tools.
- Never touch the compressor to avoid injury.
- This appliance is not intended for use by persons (including children) with reduced physical, sensory or mental capabilities or lack of experience and knowledge, unless they have been given supervision or instruction concerning use of the appliance by a person responsible for their safety.
- Children should be supervised to ensure that they do not play with or around the appliance.
- The operation manual is not suitable for persons (including children) with reduced physical, sensory or mental capabilities, or lack of experience and knowledge.

## **MANUFACTURER'S WARRANTY AND LIABILITY**

The manufacturer's warranty covering the good functioning of the machines and their compliance to the service for which they have been designed depends on the correct application of the instructions contained in this manual. The Manufacturer assumes no liability either direct or indirect deriving from:

- Failure to comply with the instructions contained in this manual.
- Use of the machine by personnel who have not read or fully understood the content of this manual.
- Use not complying to the specific norms currently applicable in the country of installation.
- Unauthorized modifications and/or repairs.
- Use of non original accessories or spare parts.
- Exceptional events.

## **OPENING THE BOX**

On reception check packaging integrity, inform courier and Omcan representative immediately.

To unpack the machine, proceed as follows:

- Open the box and remove your copy of the manual of use and maintenance, then proceed according to the instructions found on that manual.
- Lift the machine still wrapped in a transparent polyethylene sheet and extract it from the box.
- Now check the box content and make sure it corresponds to what shown on the external label.

**RESIDENTIAL USERS: Vendor assumes no liability for parts or labor coverage for component failure or other damages resulting from installation in non-commercial or residential applications. The right is reserved to deny shipment for residential usage; if this occurs, you will be notified as soon as possible.**

## **1 YEAR PARTS AND LABOUR WARRANTY**

**Within the warranty period, contact Omcan Inc. at 1-800-465-0234 to schedule an Omcan authorized service technician to repair the equipment locally.**

**Unauthorized maintenance will void the warranty. Warranty covers electrical and part failures, not**

# Safety and Warranty

improper use.

Please see <https://omcan.com/disclaimer> for complete info.

## WARNING:

The packaging components (cardboard, polyethylene, and others) are classified as normal solid urban waste and can therefore be disposed of without difficulty.

In any case, for suitable recycling, we suggest disposing of the products separately (differentiated waste) according to the current norms.

**DO NOT DISCARD ANY PACKAGING MATERIALS IN THE ENVIRONMENT!**

# Technical Specifications

Model	RS-CN-0078-S	RS-CN-0078-D
Number of Doors	1	2
Capacity	82 L / 2.9 cu. ft.	86 L / 3 cu. ft.
Power	180 W	190 W
Electrical	110V / 60Hz / 1	
Lamp Power	1.44 W x 4 (LED)	
Temperature Range	0 - 12°C / 32 - 54°F	
Max Ambient Temp Rating	24°C / 75°F	
Refrigerant & Injection	R290 (40g)	
Type of Climate	4	
Rated Current	1.6A	1.7A
Number of Shelves	3	
Weight	79.4 lbs. / 36 kgs.	80 lbs. / 36.3 kgs.
Packaging Weight	85 lbs. / 38.6 kgs.	86 lbs. / 39 kgs.
Dimensions	16" x 16.7" x 38.6" 404 x 425 x 980mm	17" x 16.7" x 38.6" 429 x 425 x 980mm
Packaging Dimensions	19" x 18" x 41" 483 x 457 x 1041mm	19" x 19" x 41" 483 x 483 x 1041mm
Item Number	25826	25827

# Handling and Assembly

<p><b>Handle with care</b> Unplug the wall socket first. Never tilt it over 45 degrees when handling.</p>	<p><b>Dry place</b> Always locate the refrigerator in a dry location.</p>
<p><b>Sufficient space</b> The distance from both sides and back of refrigerator to wall or other substance must be no less than 10cm. The refrigeration capability may decrease if its surrounding space is too small to circulate air.</p>	<p><b>Well ventilated</b> Always locate the refrigerator in an area with good ventilation. When using for the first time, wait for 24 hours after handling to start.</p>
<p><b>Far from heat source</b> Never place the refrigerator direction under sunlight. Never locate it near any heat source to prevent reducing refrigeration capability.</p>	<p><b>No heavy load</b> Never put any heavy objects on top of the refrigerator.</p>
<p><b>Do not make holes</b> Never make any holes on the refrigerator. Do not attach any objects onto the refrigerator.</p>	<p><b>Stable Location</b> Unpack and place the refrigerator on flat and stable ground.</p>
<p><b>Exclusive power socket</b> Normally, the power supply should be 100 – 110V, 60 Hz single phase AC with exclusive single phase two pin receptacle.</p>	<p><b>Do not share the socket</b> Never let the refrigerator share a socket with another appliance. The cable may become hot and this may cause a fire.</p>
<p><b>Protect cables</b> Never break or damage the cables as this may cause electrical shock.</p>	<p><b>No water flushing</b> Never give the refrigerator surface a flush otherwise electrical shock may occur.</p>
<p><b>Avoid flammable and explosive objects</b> Never put any flammable or explosive items inside the refrigerator such as gasoline or alcohol. Never put any dangerous product nearby the refrigerator.</p>	<p><b>No spray</b> Do not spray the unit with a flammable substance such as paint. This may result in a fire.</p>
<p><b>After power break</b> After power break or unplugging the refrigerator, always wait at least 5 minutes before starting the refrigerator again.</p>	<p><b>No medicine</b> No medicine is allowed to be kept inside the refrigerator.</p>

# Operation

## BEFORE USE:

Plug the refrigerator on 110V exclusive socket. After the refrigerator is running, test the air suction to confirm that it is sufficiently cold. Then you may put food and drinks inside.

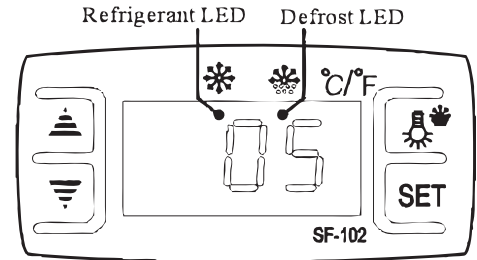


# Operation



## DIGITAL TEMPERATURE CONTROLLER:

### FEATURES OF FUNCTION

It is a mini-sized and integrated intelligent controller and applicable to the compressor of one HP. The main functions are: Temperature Display, Temperature Control, Manual/Automatic defrost by turning off, Illumination Control, Value Storing, Self Testing, Parameter Locking.



### FRONT PANEL OPERATION

1. Set temperature:  
Press "SET" button, the set temperature is displayed.  
Press  $\triangle$  or  $\nabla$  button to modify and store the displayed value.  
Press "SET" button to exit the adjustment and display the cold-room temperature.
2. If no more button is pressed within 10 seconds, the cold-room temperature will be displayed.
3. Illumination: Press  button, it lights; Press again, it stops.  
Manual start/stop defrost: Press  button and hold for 6 seconds to defrost or stop defrost.
4. Refrigerant LED: During refrigeration, the LED is on; When the cold room temp. is constant, the LED is off; During the delay start, the LED flashes.
5. Defrost LED: during defrosting, the LED is on; When is stops defrosting, the LED is off, During the delay display of defrost, the LED flashes.
6. Digital controller reset:  
When display shows "DISORDER", press  $\nabla$  button for 2s until buzzer rings, quickly press  $\triangle$  button for 6s until buzzer rings again, the display will flash for 3s and it restores factory setting.

# Maintenance

Keep the refrigerator clean and periodic maintenance is necessary. Always unplug the power cord before maintenance. Never use a damaged plug or loose socket to prevent electric shock or short circuiting. Never flush the refrigerator. Never use alkaline detergent, soap, gasoline, acetone or bush.

## CLEAN OUTSIDE

Dip a soft cloth in neutral detergent (dish detergent) to clean the outside of the refrigerator and then wipe it with a dry soft cloth.

## CLEAN INSIDE

Take the rack out for cleaning with water. Use a soft cloth to wipe the box.

## SHUTTING DOWN REFRIGERATOR FOR EXTENDED PERIODS

Take out all food and unplug the wall socket. Clean both inside and outside of the refrigerator thoroughly

# Maintenance

---

and open the door to sufficiently dry. LEAVE DOOR OPEN DURING LONG TERM STORAGE. Clean the condensate tray and wipe dry.

# Troubleshooting

---

Trouble	Cause and Remedy
No refrigeration	Is the plug in the wall socket?
	Is the fuse blown?
Unsatisfactory refrigeration	Is it under direct sunlight? Is there any heat source nearby?
	Does the door close well? Has the door been open for an extended period?
	Is the door seal strip deformed or damaged?
	Is the refrigerator over filled?
	Does food block the air outlet?
	Regulate the temperature controller.
Too much noise	The refrigerator is not level.
	The refrigerator touches the wall or other objects.
	There is a loose part in the refrigerator.
Contact an Omcan service agent for help if simple troubleshooting does not solve the problems.	

**The following situations are not problems:**

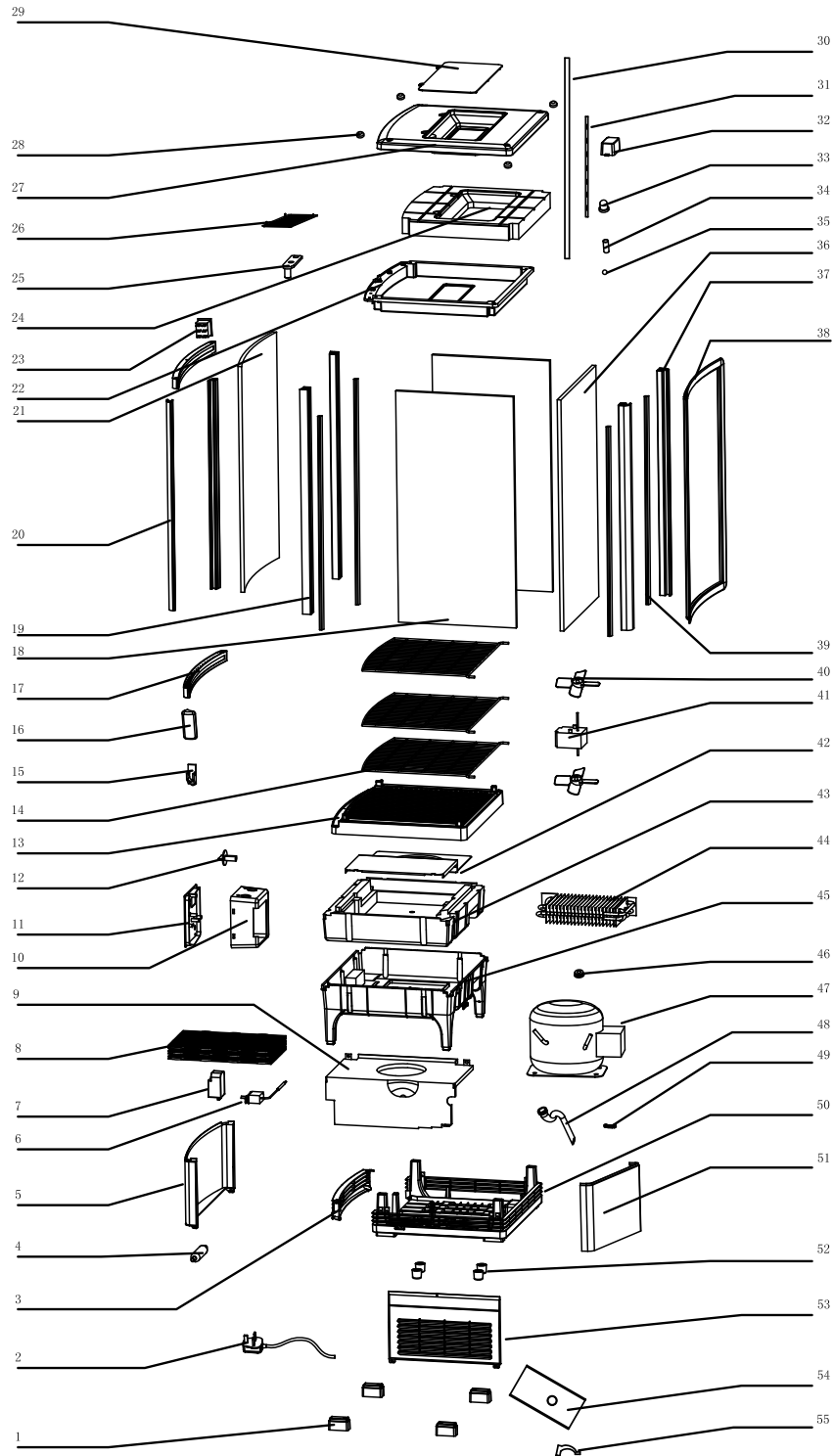
- The murmur of water is heard when the refrigerator is working. This is normal as the coolant is circulating in the system.
- During high humidity days, condensation may be found on the outside of the refrigerator. This is not a problem, this is caused by high ambient humidity. Simply use a cloth to wipe it.

**NOTE**

1. The electric circuit diagram and parameters on the product name plate are final.
2. The design might be improve without notice.
3. If the supply cord is damaged, it must be replaced by the manufacturer, its service agent or similarly qualified persons in order to avoid hazard.

# Parts Breakdown

Model RS-CN-0078-S 25826



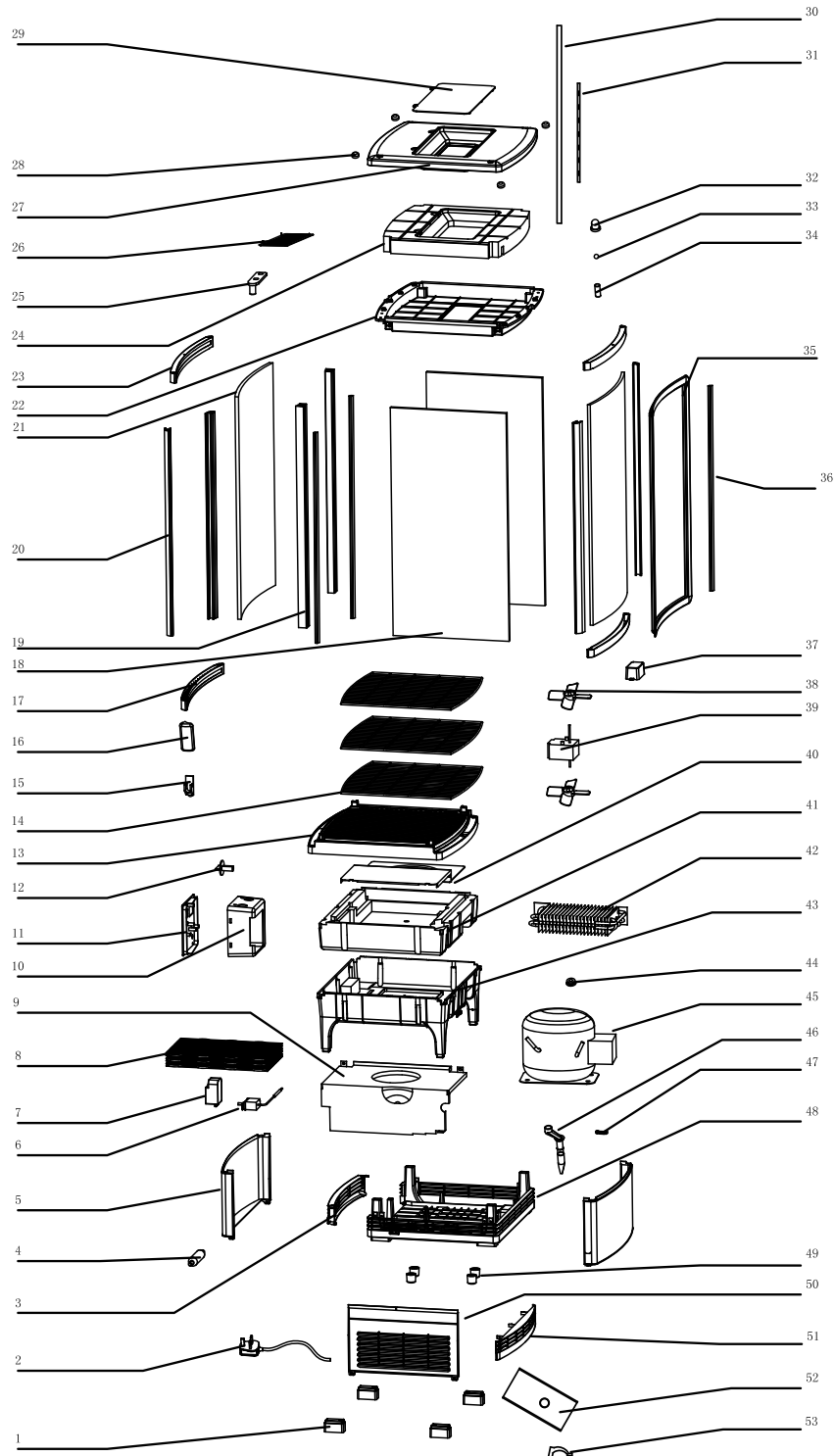
# Parts Breakdown

## Model RS-CN-0078-S 25826

Item No.	Description	Position	Item No.	Description	Position	Item No.	Description	Position
30563	Base Foot for 25826	1	30601	Pole for 25826	20	30593	Light Tube for 25826	39
30621	Power Cord for 25826	2	30584	Door Glass for 25826	21	30607	Fan Blade for 25826	40
30565	Plastic Door for 25826	3	30598	Light Ceiling for 25826	22	30608	Fan Motor for 25826	41
30624	Dry Filter for 25826	4	30597	Switch for 25826	23	30576	Evaporator Protect Board for 25826	42
79666	Curved Front Base Panel for 25826	5	30589	Lamp Insert Foam for 25826	24	30609	Foam Base of Evaporator for 25826	43
30568	Thermostat for 25826	6	30587	Upper Gemel for 25826	25	30612	Evaporator for 25826	44
30569	Defrost Timer for 25826	7	79665	Transparent Light Ceiling for 25826	26	30614	Plastic Base for 25826	45
30571	Condenser for 25826	8	30591	Upper Cover for 25826	27	30613	Motor Fixed Ring for 25826	46
30572	Condenser Cushion for 25826	9	30592	Screw Cover for 25826	28	30615	Compressor for 25826	47
30573	Control Box for 25826	10	30588	Outer Light Cover for 25826	29	30616	Upper/Bottom Seep Tube for 25826	48
30574	Control Panel for 25826	11	30603	Side Stainless Iron Piece for 25826	30	30617	Wire Board for 25826	49
30575	Control Knob for 25826	12	30602	Top and Bottom Stainless Iron Piece for 25826	31	30618	Plastic Fence for 25826	50
30577	Vent Tray for 25826	13	30595	Ballast for 25826	32	30567	Front Grill for 25826	51
30579	Shelf for 25826	14	30604	Bush for 25826	33	79663	Circular Pad for 25826	52
30578	Shelf Clip for 25826	15	30605	Steel Ball for 25826	34	30564	Side Grill for 25826	53
30580	Handle for 25826	16	30606	Door Pin for 25826	35	79662	Metal Base of Fan Motor for 25826	54
30583	Upper Door Frame for 25826	17	30600	Rear Glass for 25826	36	60140	Hook for Insulation Pipe for 25826	55
30599	Side Glass for 25826	18	79664	Black Pole for 25826	37			
30585	Front Pole for 25826	19	30586	Door Gasket for 25826	38			

# Parts Breakdown

Model RS-CN-0078-D 25827



# Parts Breakdown

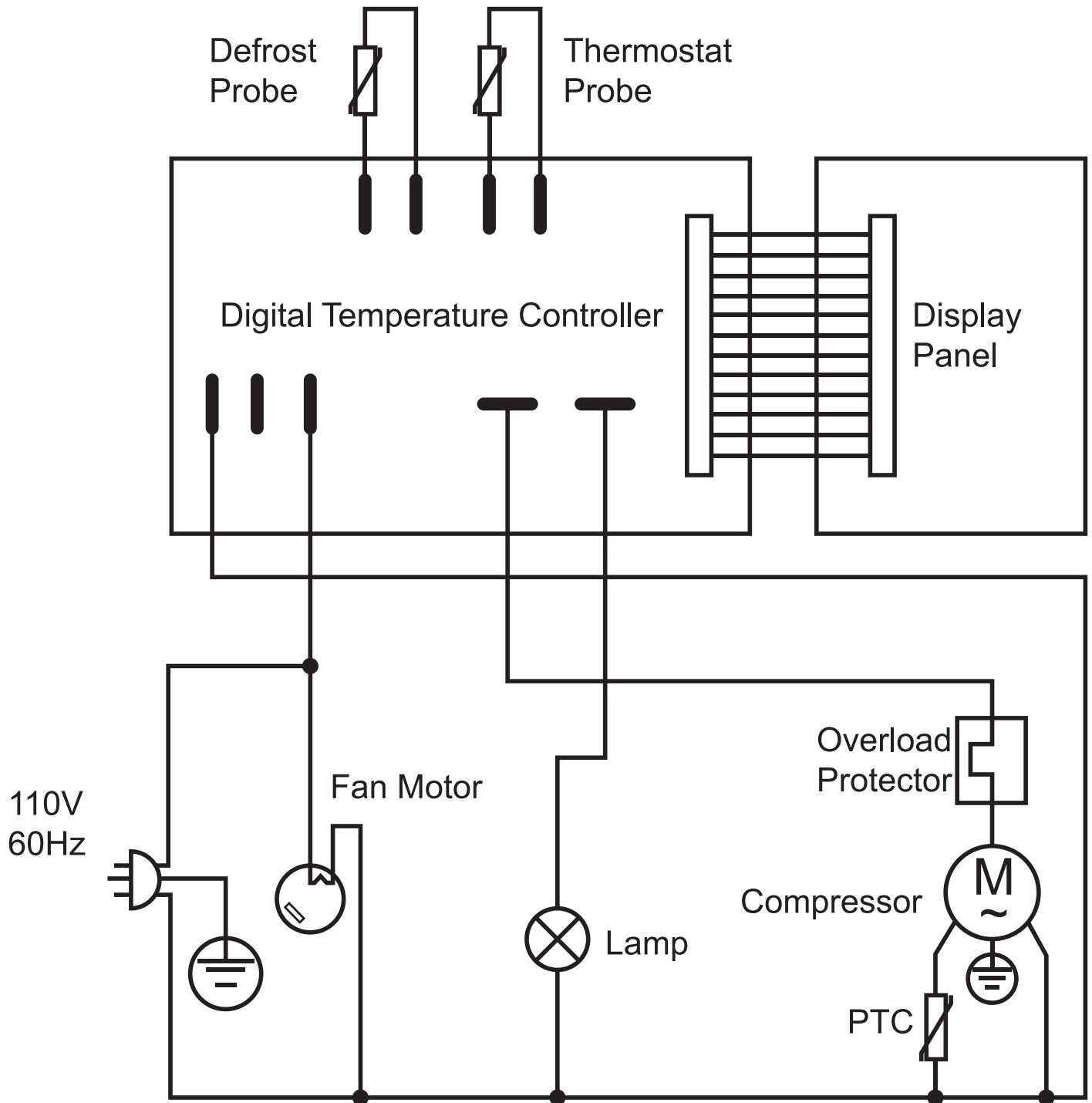
## Model RS-CN-0078-D 25827

Item No.	Description	Position	Item No.	Description	Position	Item No.	Description	Position
30626	Base Foot for 25827	1	30585	Front Pole for 25827	19	30656	Ballast for 25827	37
30621	Power Cord for 25827	2	30661	Pole for 25827	20	30667	Fan Blade for 25827	38
30628	Plastic Door for 25827	3	30584	Door Glass for 25827	21	30668	Fan Motor for 25827	39
30683	Dry Filter for 25827	4	30659	Light Ceiling for 25827	22	30670	Evaporator Tray for 25827	40
79666	Curved Front Base Panel for 25827	5	79667	Upper Door Frame for 25827	23	30669	Foam Base of Evaporator for 25827	41
30631	Thermostat for 25827	6	30650	Lamp Insert Foam for 25827	24	30671	Evaporator for 25827	42
30632	Defrost Timer for 25827	7	30648	Upper Gemel for 25827	25	30673	Plastic Base for 25827	43
30634	Condensator for 25827	8	79665	Transparent Light Ceiling for 25827	26	30672	Motor Fixed Ring for 25827	44
30635	Condensator Cushion for 25827	9	30652	Upper Cover for 25827	27	30674	Compressor for 25827	45
30636	Control Box for 25827	10	30653	Screw Cover for 25827	28	30675	Upper/Bottom Seep Tube for 25827	46
30637	Control Panel for 25827	11	30649	Outer Light Cover for 25827	29	30676	Wire Board for 25827	47
30638	Control Knob for 25827	12	30665	Side Stainless Iron Piece for 25827	30	30677	Plastic Fence for 25827	48
30640	Vent Tray for 25827	13	30666	Top and Bottom Stainless Iron Piece for 25827	31	79663	Circular Pad for 25827	49
30642	Shelf for 25827	14	30662	Bush for 25827	32	30627	Side Grill for 25827	50
30641	Shelf Clip for 25827	15	30663	Steel Ball for 25827	33	30678	Insert Parts for 25827	51
30643	Handle for 25827	16	30664	Door Pin for 25827	34	79662	Metal Base of Fan Motor for 25827	52
30646	Upper/Bottom Door Frame for 25827	17	30647	Door Gasket for 25827	35	60140	Hook for Insulation Pipe for 25827	53
30660	Side Glass for 25827	18	30654	Light Tube for 25827	36			

# Electrical Schematics

**Model RS-CN-0078-S** 25826

**Model RS-CN-0078-D** 25827













# Warranty Registration

Thank you for purchasing an Omcan product. To register your warranty for this product, complete the information below, tear off the card at the perforation and then send to the address specified below. You can also register online by visiting:

Merci d'avoir acheté un produit Omcan. Pour enregistrer votre garantie pour ce produit, complétez les informations ci-dessous, détachez la carte au niveau de la perforation, puis l'envoyer à l'adresse spécifiée ci-dessous. Vous pouvez également vous inscrire en ligne en visitant:

Gracias por comprar un producto Omcan usted. Para registrar su garantía para este producto, complete la información a continuación, cortar la tarjeta en la perforación y luego enviarlo a la dirección indicada a continuación. También puede registrarse en línea en:

<https://omcan.com/warranty-registration/>

For mailing in Canada

Pour postale au Canada

Por correo en Canadá

**OMCAN**

PRODUCT WARRANTY REGISTRATION

3115 Pepper Mill Court,

Mississauga, Ontario

Canada, L5L 4X5

For mailing in the US

Pour diffusion aux États-Unis

Por correo en los EE.UU.

**OMCAN**

PRODUCT WARRANTY REGISTRATION

4450 Witmer Industrial Estates, Unit 4,

Niagara Falls, New York

USA, 14305

*or email to: [service@omcan.com](mailto:service@omcan.com)*



Purchaser's Information

Name: \_\_\_\_\_

Address: \_\_\_\_\_

City: \_\_\_\_\_ Province or State: \_\_\_\_\_ Postal or Zip: \_\_\_\_\_

Country: \_\_\_\_\_

Dealer from which Purchased: \_\_\_\_\_

Dealer City: \_\_\_\_\_ Dealer Province or State: \_\_\_\_\_

Invoice: \_\_\_\_\_

Model Name: \_\_\_\_\_ Model Number: \_\_\_\_\_

Machine Description: \_\_\_\_\_

Date of Purchase (MM/DD/YYYY): \_\_\_\_\_

Would you like to extend the warranty?  Yes  No

Company Name: \_\_\_\_\_

Telephone: \_\_\_\_\_

Email Address: \_\_\_\_\_

Type of Company:

Restaurant  Bakery  Deli

Butcher  Supermarket  Caterer

Institution (specify): \_\_\_\_\_

Other (specify): \_\_\_\_\_

Serial Number: \_\_\_\_\_

Date of Installation (MM/DD/YYYY): \_\_\_\_\_

**Thank you for choosing Omcan | Merci d'avoir choisi Omcan | Gracias por elegir Omcan**



Since 1951 Omcan has grown to become a leading distributor of equipment and supplies to the North American food service industry. Our success over these many years can be attributed to our commitment to strengthen and develop new and existing relationships with our valued customers and manufacturers. Today with partners in North America, Europe, Asia and South America, we continually work to improve and grow the company. We strive to offer customers exceptional value through our qualified local sales and service representatives who provide convenient access to over 6,500 globally sourced products.

---

Depuis 1951 Omcan a grandi pour devenir un des “leaders” de la distribution des équipements et matériel pour l’industrie des services alimentaires en Amérique du Nord. Notre succès au cours de ces nombreuses années peut être attribué à notre engagement à renforcer et à développer de nouvelles et existantes relations avec nos clients et les fabricants de valeur. Aujourd’hui avec des partenaires en Amérique du Nord, Europe, Asie et Amérique du Sud, nous travaillons continuellement à améliorer et développer l’entreprise. Nous nous efforçons d’offrir à nos clients une valeur exceptionnelle grâce à nos ventes locales qualifiées et des représentants de service qui offrent un accès facile à plus de 6500 produits provenant du monde entier.

---

Desde 1951 Omcan ha crecido hasta convertirse en un líder en la distribución de equipos y suministros de alimentos en América del Norte industria de servicios. Nuestro éxito en estos años se puede atribuir a nuestro compromiso de fortalecer y desarrollar nuevas relaciones existentes con nuestros valiosos clientes y fabricantes. Hoy con socios de América del Norte, Europa, Asia y América del Sur, que trabajan continuamente para mejorar y crecer la empresa. Nos esforzamos por ofrecer a nuestros clientes valor excepcional a través de nuestro local de ventas y representantes de los servicios que proporcionan un fácil acceso a más de 6,500 productos con origen a nivel mundial.

