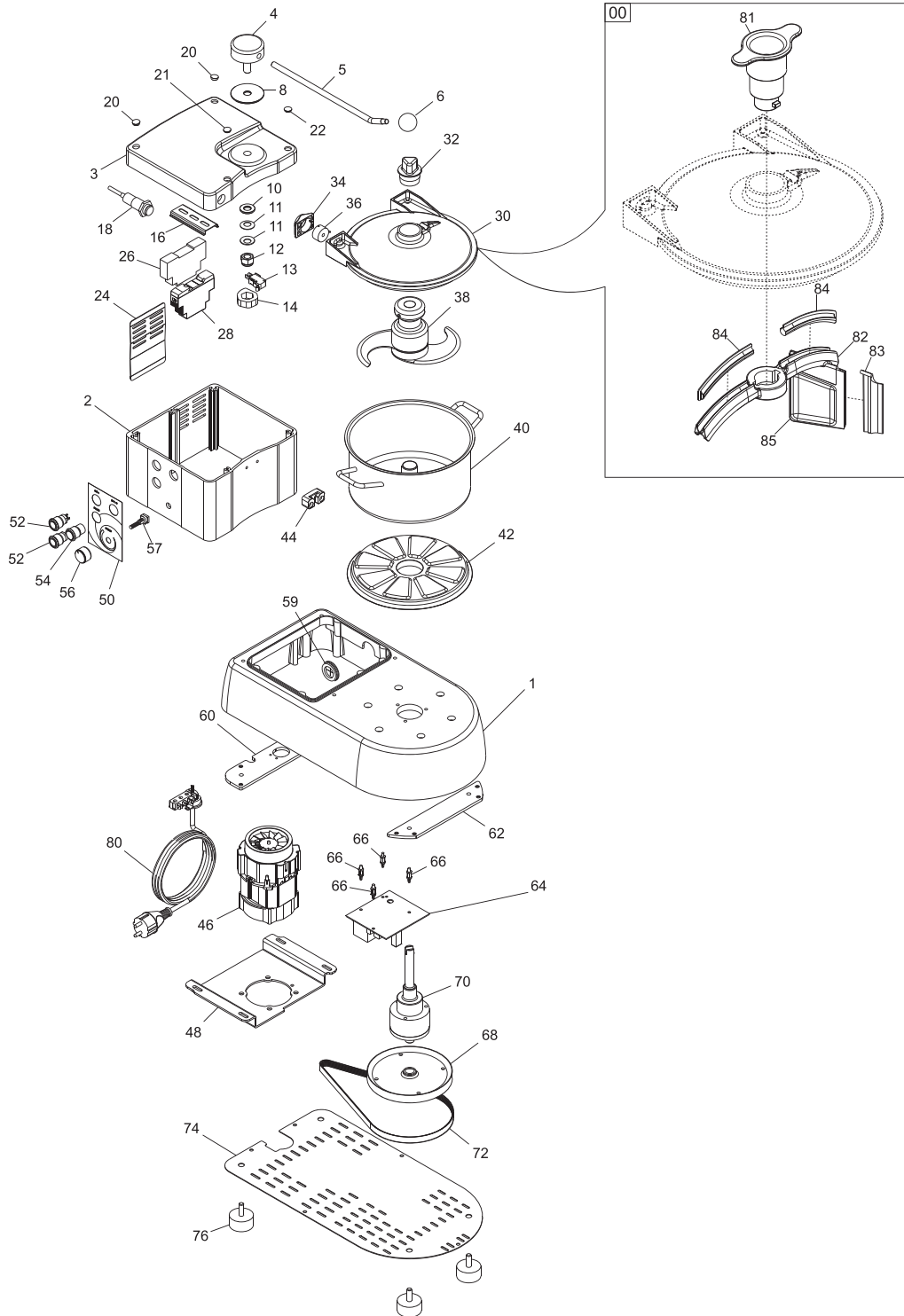


Parts Breakdown

Model FP-IT-0006-VT 47269



Parts Breakdown

Model FP-IT-0006-VT 47269

Item No.	Description	Position	Item No.	Description	Position	Item No.	Description	Position
AH784	Scraper Spatula 6 for 47269	00	AH755	Control Unit NC 11 01 for 47269	26	AH769	Rubber Grommet 9 for 47269	59
AH742	Base 6 Bril. for 47269	01	AH756	Switching Power Supply 24VDC 12W for 47269	28	AH770	Long Foot Plate 6 for 47269	60
AH785	Neck 6 Oss. for 47269	02	AH757	Cover Compl. + Guarn. 6 for 47269	30	AH771	Short Foot Plate 6 for 47269	62
AH744	Head 4-6 Bril. for 47269	03	AH758	Cover Cap 9 for 47269	32	AH772	Pot 4-6 Board Y19 230 MN for 47269	64
AH745	Lever Flange 9 for 47269	04	AH759	Magn. Unit Holder Lock 6 for 47269	34	AH773	6 Card Spacer for 47269	66
AH746	Rod Lever 6 for 47269	05	AH760	Magnetic Unit Coded N 180 HA for 47269	36	AH774	Variot Hub Pulley for 47269	68
AH747	Upper Ice Knob for 47269	06	AH787	Shaft with Regular Knives for 47269	38	AH789	Complete Pulley Hub 6 for 47269	70
AH748	Clutch Washer Lever 9 for 47269	08	37174	Bowl for 47269	40	17764	Belt for 47269	72
AH749	Cam Thickness Washer 9 for 47269	10	AH761	Pot Lift 6 for 47269	42	AH776	Cover 6 for 47269	74
61573	Cup Spring 12.2x25x0.7 for 47269	11	AH762	Cooker Lock 4-6 for 47269	44	AH777	Foot 40x20 M8x23 for 47269	76
37151	Clutch Nut for 47269	12	60295	Motor 110V 50Hz for 47269	46	AH778	Power Cable Comp. Suko with PA244S for 47269	80
AH750	Microswitch with Lever HRC for 47269	13	AH763	Motor Slide 6 for 47269	48	AH779	Spatula Handle 9 for 47269	81
37152	Microswitch Cam for 47269	14	AH788	Show Commands C6 Inv. for 47269	50	AH780	Spatula Arm 6 for 47269	82
AH751	Din Rail Control Unit 9 for 47269	16	AH765	Stainless Steel Button with Light Y10 for 47269	52	AH790	Pot Scraper 6 for 47269	83
AH752	Coded Sensor N180 FB M18 for 47269	18	AH766	Stainless Steel Button Y10 for 47269	54	AH782	Rubber Arm Spatula 6 for 47269	84
AH753	Head Screw Caps Set for 47269	22	AH767	Potentiom Knob. D.24 for 47269	56	AH791	Supp. Scraper Pot 6 for 47269	85
AH786	Ventilation Sheet 6 for 47269	24	AH768	Power Wired for 47269	57			