



SERVING THE FOOD INDUSTRY SINCE 1951

Mega Refrigerated Sandwich/ Salad Prep Tables

50045
PT-CN-0686-HC

50046
PT-CN-1194-HC

50047
PT-CN-1524-HC

50048
PT-CN-1778-HC



Enhance your food business setup with ultimate Refrigerated Mega Prep Tables.

These tables designed to efficiently organize and cool ingredients for a variety of culinary needs, from sandwiches to salads and beyond.

KEY FEATURES

Ample Space

These refrigerated prep tables boast a spacious working area, allowing for extra ingredient storage.

Energy efficiency

The isolation system is built using Cyclopentane, which helps to maintain the temperature within the food storage while reducing energy consumption.

Durability

High-quality stainless steel construction provides durability and longevity, and guarantees maximum hygiene and food-grade standards.

Convenience

Thick commercial-grade cut board mounted to the table is convenient for cutting and dicing the food during preparation, protecting your table from scratches and knife marks.

Mobility

The table is equipped with heavy-duty casters for effortless movement and setup, while ensuring that your surface remains unscathed.

Eco-Friendly

The equipments use Hydro-Carbon R290 refrigerant, which is both environmentally friendly and energy efficient. This results in an overall reduction of energy costs of up to 28%.

Telephone: 1-800-465-0234

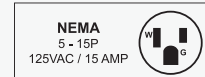
Fax: (905) 607-0234

Email: sales@omcan.com

Website: www.omcan.com



Authorized Dealer

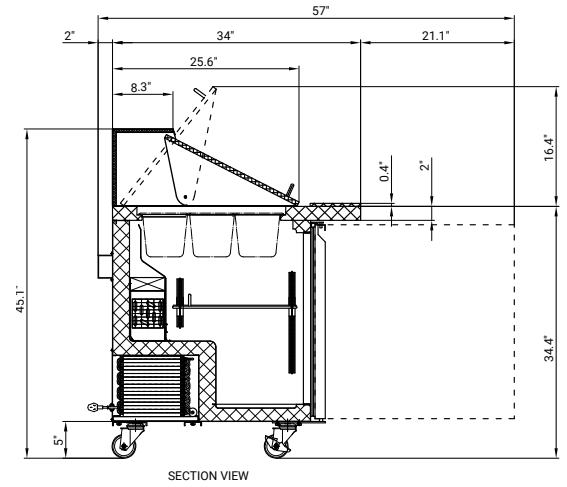
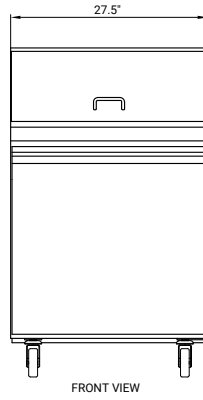
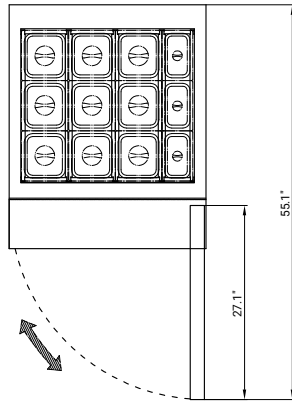


TECHNICAL SPECIFICATION

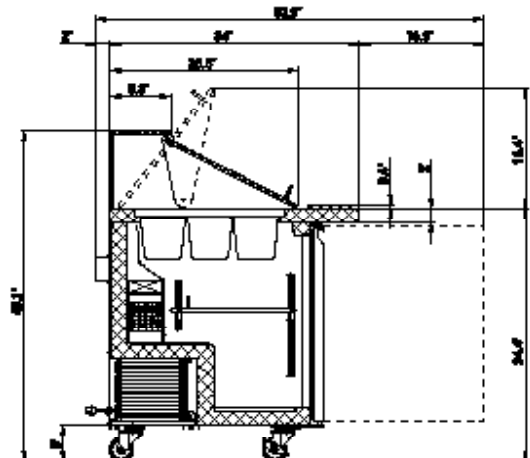
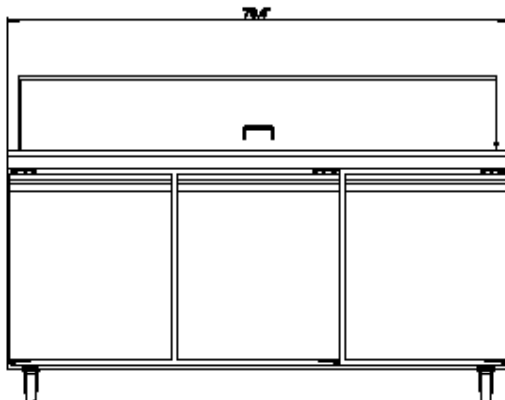
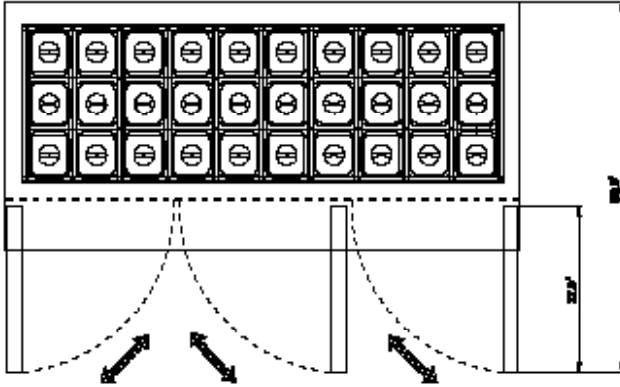
Item	50045	50046	50047	50048
Model	PT-CN-0686-HC	PT-CN-1194-HC	PT-CN-1524-HC	PT-CN-1778-HC
Features	28" with 1 Door	47" with 2 Doors	60" with 2 Doors	70" with 3 Doors
Width	28"	47"	60"	70"
Net Volume	160 L (5.6 cu.ft.)	286 L (10 cu.ft.)	428 L (15.1 cu.ft.)	440 L (15.5 cu.ft.)
Temperature Range	0.5 - 5°C (33 - 41°F)			
Max Ambient Temp Rating	32°C (90°F)			
Power	150 W	186 W	186 W	560 W
Amps	2.88 A	4.56 A	4.8 A	8.9 A
Electrical	110V / 60Hz / 1Ph			
Refrigerant	R290			
Isolation Material	cyclopentane			
Cooling System	ventilated			
Defrosting	Automatic			
Type of Controller	Digital			
Self-Closing Door	YES			
Number of Doors	1	2	2	3
Number of Shelves	1	2	2	3
Number of Casters	4			
Shelf Loading Capacity	44 lbs. (20 kg)	40 lbs. (18 kg)	53 lbs. (24 kg)	44 lbs. (20 kg)
Shelf Material	Plastic Coated			
Number of Insert Pans	6 x 1/6 GN 2 x 1/9 GN	12 x 1/6 GN 6 x 1/3 GN	16 x 1/6 GN	18 x 1/6 GN
Interior Dimensions (WDH)	24" x 23.8" x 23.5" (611 x 605 x 597 mm)	42.8" x 23.8" x 23.5" (1088 x 605 x 597 mm)	56" x 23.8" x 23.5" (1429 x 605 x 597 mm)	66" x 24" x 23.5" (1687 x 605 x 597 mm)
Exterior Dimensions (WDH)	27.5" x 29.5" x 42.4" (698 x 750 x 1075 mm)	46 7/8" x 29 1/2" x 42 3/8" (1188 x 750 x 1075 mm)	60" x 29.5" x 42.4" (1529 x 750 x 1075 mm)	70.4" x 29.5" x 42.4" (1787 x 750 x 1075 mm)
Gross Dimensions (WDH)	32 2/8" x 34 5/8" x 45 5/8" (820 x 880 x 1160 mm)	52" x 34 5/8" x 45 5/8" (1320 x 880 x 1160 mm)	65.4" x 34.6" x 45.6" (1660 x 880 x 1160 mm)	75.6" x 34.6" x 45.6" (1920 x 880 x 1160 mm)
Net Weight	187 lbs. (85 kg)	271 lbs. (123 kg)	319 lbs. (145 kg)	378 lbs. (172 kg)
Gross Weight	255 lbs. (116 kg)	394 lbs. (179 kg)	451 lbs. (205 kg)	513 lbs. (233 kg)

TECHNICAL DRAWINGS

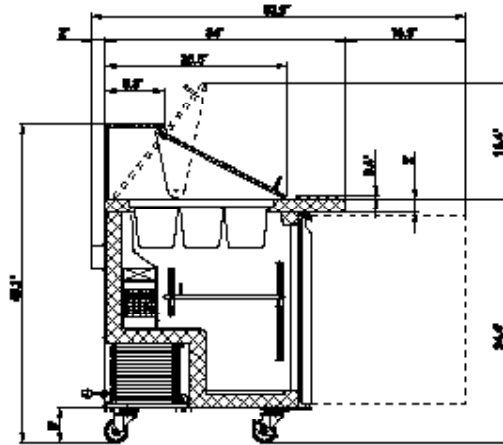
#50045
28-inch Mega



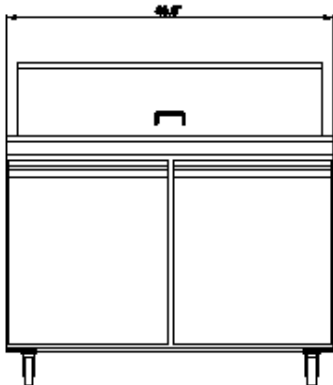
#50048
70-inch Mega



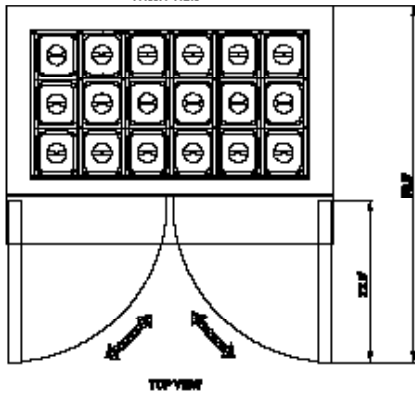
TECHNICAL DRAWINGS



#50046
47-inch Mega



FRONT VIEW



TOP VIEW

#50047
60-inch Mega

