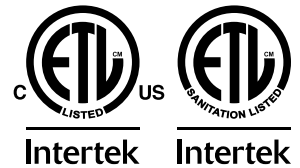




**Refrigerated Showcases**  
Models RS-CN-0530, 0700, 1050  
Items 43459, 41469, 43460  
**Instruction Manual**



*Revised - 01/25/2024*



Toll Free: 1-800-465-0234  
Fax: 905-607-0234  
Email: [service@omcan.com](mailto:service@omcan.com)  
[www.omcan.com](http://www.omcan.com)



# ***Table of Contents***

Model RS-CN-0530 / Model RS-CN-0700 / Model RS-CN-1050

---

<b>Section</b>	<b>Page</b>
Disclaimer -----	3
General Information -----	4 - 5
Safety and Warranty -----	5 - 7
Technical Specifications -----	8
Operation -----	8 - 9
Maintenance -----	9 - 10
Troubleshooting -----	10 - 11
Parts Breakdown -----	12 - 19
Electrical Schematics -----	20 - 22
Warranty Registration -----	23

## *Disclaimer*

---

***OMCAN IS NOT RESPONSIBLE FOR ANY DAMAGES DUE TO WATER LEAKS. WARRANTY FOR WATER LEAKS IS VOID IF THE AMBIENT ROOM TEMPERATURE EXCEEDS 75°F AND 55% RELATIVE HUMIDITY, AND THE APPLIANCE DRAIN IS NOT CONNECTED DIRECTLY TO A FLOOR DRAIN.***

---

***OMCAN N'EST PAS RESPONSABLE DES DOMMAGES DUS AUX FUITES D'EAU. LA GARANTIE POUR LES FUITES D'EAU EST ANNULÉE SI LA TEMPÉRATURE AMBIANTE DE LA PIÈCE DÉPASSE 75°F ET 55% D'HUMIDITÉ RELATIVE, ET SI LE DRAIN DE L'APPAREIL N'EST PAS RACCORDÉ DIRECTEMENT À UN DRAIN DE PLANCHER.***

---

***OMCAN NO SE HACE RESPONSABLE DE LOS DAÑOS CAUSADOS POR FUGAS DE AGUA. LA GARANTÍA POR FUGAS DE AGUA QUEDA ANULADA SI LA TEMPERATURA AMBIENTE SUPERA LOS 75°F Y EL 55% DE HUMEDAD RELATIVA, Y EL DESAGÜE DEL APARATO NO ESTÁ CONECTADO DIRECTAMENTE A UN DESAGÜE DE PISO.***

# General Information

---

Omcan Manufacturing and Distributing Company Inc., Food Machinery of America, Inc. dba Omcan and Omcan Inc. are not responsible for any harm or injury caused due to any person's improper or negligent use of this equipment. The product shall only be operated by someone over the age of 18, of sound mind, and not under the influence of any drugs or alcohol, who has been trained in the correct operation of this machine, and is wearing authorized, proper safety clothing. Any modification to the machine voids any warranty, and may cause harm to individuals using the machine or in the vicinity of the machine while in operation.

## CHECK PACKAGE UPON ARRIVAL

Upon receipt of an Omcan shipment please inspect for external damage. If no damage is evident on the external packaging, open carton to ensure all ordered items are within the box, and there is no concealed damage to the machine. If the package has suffered rough handling, bumps or damage (visible or concealed), please note it on the bill of lading before accepting the delivery and contact Omcan within 24 hours, so we may initiate a claim with the carrier. A detailed report on the extent of the damage caused to the machine must be filled out within three days, from the delivery date shown in the shipping documents. Omcan has no recourse for damaged products that were shipped collect or third party.

**Before operating any equipment, always read and familiarize yourself with all operation and safety instructions.**

Omcan would like to thank you for purchasing this machine. It's of the utmost importance to save these instructions for future reference. Also save the original box and packaging for shipping the equipment if servicing or returning of the machine is required.

---

Omcan Fabrication et distribution Compagnie Limitée et Food Machinery d'Amérique, dba Omcan et Omcan Inc. ne sont pas responsables de tout dommage ou blessure causé du fait que toute personne ait utilisé cet équipement de façon irrégulière. Le produit ne doit être exploité que par quelqu'un de plus de 18 ans, sain d'esprit, et pas sous l'influence d'une drogue ou d'alcool, qui a été formé pour utiliser cette machine correctement, et est vêtu de vêtements de sécurité appropriés. Toute modification de la machine annule toute garantie, et peut causer un préjudice à des personnes utilisant la machine ou des personnes à proximité de la machine pendant son fonctionnement.

## VÉRIFIEZ LE COLIS DÈS RÉCEPTION

Dès réception d'une expédition d'Omcan veuillez inspecter pour dommages externes. Si aucun dommage n'est visible sur l'emballage externe, ouvrez le carton afin de s'assurer que tous les éléments commandés sont dans la boîte, et il n'y a aucun dommage dissimulé à la machine. Si le colis n'a subi aucune mauvaises manipulations, de bosses ou de dommages (visible ou cachée), notez-le sur le bond de livraison avant d'accepter la livraison et contactez Omcan dans les 24 heures qui suivent, pour que nous puissions engager une réclamation auprès du transporteur. Un rapport détaillé sur l'étendue des dommages causés à la machine doit être rempli dans un délai de trois jours, à compter de la date de livraison indiquée dans les documents d'expédition. Omcan n'a aucun droit de recours pour les produits endommagés qui ont été expédiés ou cueilli par un tiers transporteur.



# General Information

---

Avant d'utiliser n'importe quel équipement, toujours lire et vous familiariser avec toutes les opérations et les consignes de sécurité.

Omcan voudrais vous remercier d'avoir choisi cette machine. Il est primordial de conserver ces instructions pour une référence ultérieure. Également conservez la boîte originale et l'emballage pour l'expédition de l'équipement si l'entretien ou le retour de la machine est nécessaire.

---

Omcan Empresa De Fabricacion Y Distribucion Inc. Y Maquinaria De Alimentos De America, Inc. dba Omcan y Omcan Inc. no son responsables de ningun daño o perjuicio causado por cualquier persona inadecuada o el uso descuidado de este equipo. El producto solo podra ser operado por una persona mayor de 18 años, en su sano juicio y no bajo alguna influencia de droga o alcohol, y que este ha sido entrenado en el correcto funcionamiento de esta máquina, y ésta usando ropa apropiada y autorizada. Cualquier modificación a la máquina anula la garantía y puede causar daños a las personas usando la máquina mientras esta en el funcionamiento.

## REVISE EL PAQUETE A SU LLEGADA

Tras la recepcion de un envio Omcan favor inspeccionar daños externos. Si no hay daños evidentes en el empaque exterior, Habra el carton para asegurarse que todos los articulos solicitados estén dentro de la caja y no encuentre daños ocultos en la máquina. Si el paquete ha sufrido un manejo de poco cuidado, golpes o daños (visible o oculto) por favor anote en la factura antes de aceptar la entrega y contacte Omcan dentro de las 24 horas, de modo que podamos iniciar una reclamación con la compañía. Un informe detallado sobre los daños causados a la máquina debe ser llenado en el plazo de tres días, desde la fecha de entrega que se muestra en los documentos de envío. Omcan no tiene ningun recurso por productos dañados que se enviaron a recoger por terceros.

Antes de utilizar cualquier equipo, siempre lea y familiarizarse con todas las instrucciones de funcionamiento y seguridad.

Omcan le gustaría darle las gracias por la compra de esta máquina. Es de la mayor importancia para salvar estas instrucciones para futuras consultas. Además, guarda la caja original y el embalaje para el envío del equipo si servicio técnico o devolución de la máquina que se requiere.

# Safety and Warranty

---

## HANDLING AND INSTALLATION

<b>Handle with care</b> Unplug from the wall socket before moving. Never tilt the refrigerator over 45 degrees during handling.	<b>Storage</b> Always store the refrigerator in a dry place.
--	---

# Safety and Warranty

<p><b>Sufficient space</b> To allow for proper air circulation and increased refrigeration capabilities, the refrigerator must have at least 4"/10cm of space between wall/ceiling and the machine.</p>	<p><b>Proper ventilation</b> Always place the refrigerator in an area with good ventilation. For first time use, set in location and wait at least 2 hours before plugging into wall socket.</p>
<p><b>Away from heat source</b> Never place the refrigerator near any type of heat source or in direct sunlight, as it reduces refrigeration capabilities.</p>	<p><b>No heavy load</b> Never put heavy items on top of the refrigerator.</p>
<p><b>No altercations/tampering</b> Never tamper with or make changes to the refrigerator. Changes and add-ons should not be installed to the inside or outside of the refrigerator.</p>	<p><b>Stable location</b> Unpack and place the refrigerator on flat, solid ground.</p>

## PREPARATION AND POWER SUPPLY

<p><b>Exclusive power outlet</b> Power supply should be 220V, single phase AC with exclusive single phase three pin outlet (250V/10A) and fuse (6A). The power outlet must be in close proximity to the ground.</p>	<p><b>No shared power outlets</b> Refrigerator cable should never share the power outlet with any other appliance, as cable will overheat and may result in a fire.</p>
<p><b>Protect cables</b> Extra caution should be used when handling cables, as broken or damaged cables can cause sparking and may result in a fire.</p>	<p><b>No water flushing</b> Never flush the refrigerator surface. This can cause leakage, which may result in electrical damage or fire.</p>
<p><b>Never store flammables and explosives</b> No explosives or flammables should be stored in, or in proximity to, the refrigerator, such as gasoline, alcohol, and adhesives.</p>	<p><b>No spray</b> Never spray flammables such as paint or coating near the refrigerator. This may cause fire or malfunction.</p>
<p><b>After power outage</b> After a power outage or the unplugging of the refrigerator, wait at least 5 minutes before plugging it back in.</p>	<p><b>No medicine</b> Medicine should not be stored inside of the refrigerator.</p>

**SUITABLE FOR HIGH TRAFFIC AREAS WHERE NOISE LEVELS ARE NOT A CONCERN.**

**OMCAN IS NOT RESPONSIBLE FOR DIMINISHED COOLING OR ANY DAMAGES DUE TO WATER LEAKS. WARRANTY FOR WATER LEAKS IS VOID IF THE AMBIENT ROOM TEMPERATURE EXCEEDS 75°F AND 55% RELATIVE HUMIDITY, AND THE APPLIANCE DRAIN IS NOT CONNECTED DIRECTLY TO A FLOOR DRAIN.**

**RESIDENTIAL USERS: vendor assumes no liability for parts or labor coverage for component failure or other damages resulting from installation in non-commercial or residential applications. The right**



# *Safety and Warranty*

---

is reserved to deny shipment for residential usage; if this occurs, you will be notified as soon as possible.

## **1 YEAR PARTS AND LABOUR WARRANTY**

Within the warranty period, contact Omcan Inc. at 1-800-465-0234 to schedule an Omcan authorized service technician to repair the equipment locally.

Unauthorized maintenance will void the warranty. Warranty covers electrical and part failures not improper use.

Please see <https://omcan.com/disclaimer> for complete info.

### **WARNING:**

The packaging components are classified as normal solid urban waste and can therefore be disposed of without difficulty.

In any case, for suitable recycling, we suggest disposing of the products separately (differentiated waste) according to the current norms.

**DO NOT DISCARD ANY PACKAGING MATERIALS IN THE ENVIRONMENT!**

# Technical Specifications

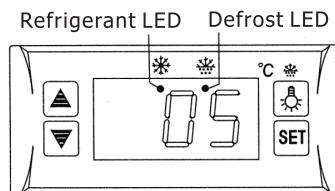
Model	RS-CN-0530	RS-CN-0700	RS-CN-1050
Rated Input Power	1340 W	2650 W	1960 W
Capacity	530 L / 18.7 cu.ft.	700 L / 24.7 cu.ft.	1050 L / 37.1 cu.ft.
Electrical	110-120V / 60Hz / 1	220V / 60Hz / 1	
Lamp Power	1.44 W x 6 (LED)		
Shelf Load Capacity	55.1 lbs. / 25 kgs.	66.1 lbs. / 30 kgs.	110.2 lbs. / 50 kgs.
Temperature Range	2 - 10°C / 35.6 - 50°F		
Max Ambient Temp Rating	24°C / 75°F		
Refrigerant & Injection	R290		
Type of Climate	3	6	3
Rated Current	11.8A	12A	9.6A
Weight	306.4 lbs. / 139 kgs.	418.9 lbs. / 190 kgs.	533.5 lbs. / 242 kgs.
Packaging Weight	352.7 lbs. / 160 kgs.	469.6 lbs. / 213 kgs.	621.7 lbs. / 282 kgs.
Dimensions	36" x 30.1" x 81.5" 915 x 765 x 2070mm	48" x 30.1" x 81.5" 1220 x 765 x 2070mm	72" x 30.1" x 81.5" 1829 x 765 x 2070mm
Packaging Dimensions	40" x 33.6" x 83.9" 1015 x 853 x 2130mm	52" x 33.6" x 83.9" 1320 x 853 x 2130mm	76" x 33.5" x 83.9" 1930 x 850 x 2130mm
Item Number	43459	41469	43460

## Operation

### BEFORE USE

- Plug refrigerator into the exclusive socket.
- After the refrigerator is running, confirm that air suction/filtration is in working order and that it is sufficiently cold. After checking to make sure the refrigerator is working properly, it may be used.

### DIGITAL TEMPERATURE CONTROLLER





## FEATURES OF FUNCTION

- Small, integrated digital controller, which is applicable to the compressor of 1 HP. Located behind the front grill.
- Main functions are: temperature display, temperature control, manual-automatic, light control, value storing, self-testing, parameter locking.

## FRONT PANEL OPERATION

1. Set temperature: press **SET** button; set temperature will be displayed. Press **▲** or **▼** button to modify and store the displayed value. Press **SET** button to exit the adjustment and display the cold-room temperature.
2. If no button is pressed within 10 seconds, the cold-room temperature will be displayed.
3. Lighting: press **☹** button to activate light in refrigerator; press again to turn off. Manual start/stop defrost: press **☹** button and hold for 6 seconds to either defrost or to stop defrost.
4. Refrigeration LED: during refrigeration, the LED is on. When the cold room temperature is constant, the LED is off. During delay start, the LED flashes.
5. Defrost LED: during defrosting, the LED is on. When it stops defrosting, the LED is off. During the delay of defrost, the LED flashed.

## CAUTION

- Never block the air outlet and suction to keep the air circulation and refrigeration capability constant.
- Do not overfill refrigerator with food, as it will influence the cooling effect. If needed, adjust the rack height for proper food storage.
- Cool down hot food to room temperature before placing inside the refrigerator.
- When power supply has been cut off, reduce opening times and maintain cool temperature in refrigerator.
- To avoid scalding, never touch the compressor.
- If the supply cord is damaged, it must be replaced by the manufacturer, its service agent, or similarly qualified persons in order to avoid hazard.
- This appliance is not intended for use by persons (including children) with reduced physical, sensory or mental capabilities, or lack of experience and knowledge, unless they have been given supervision or instruction concerning use of the appliance by a person responsible for their safety.
- Children should be supervised to ensure that they do not play with the appliance.

# Maintenance

---

1. Cabinet Cleaning:
  - a. The product should be maintained and cleaned periodically with power supply disconnected. In cleaning, please use mild-rinsing water or non-corrosive products. Do not wash directly with water faucet.
  - b. Clean outside of unit using a soft cloth with neutral detergent, and dry with a separate soft cloth.
  - c. Clean inside racks by removing them from the unit and clean with water.
2. When shutting down unit for a long period of time, take out all food and unplug wall socket. Clean inside

# Maintenance

and outside thoroughly, and keep door open to sufficiently dry.

3. As glass breaks easily, keep far away from children.
4. Frequently observe the operation of the product. In case of any abnormal noise or smell, cut off the power supply immediately and call professionals. Do not restart the product before source of trouble is found.
5. We will not be responsible for any accidents acquired through failure to follow previous notices.

## SERVICE

- To maintain good refrigeration performance, a refrigeration service person should be called periodically (at least twice a year) to clean the discharge honeycomb and remove any accumulated dirt from the condenser coil and condensate evaporator pan on self-contained models. POOR CIRCULATION OF AIR THROUGH THE CONDENSER COIL WILL RESULT IN POOR REFRIGERATION PERFORMANCE.
- Dirt accumulation inside the condensate evaporator pan will reduce the pan's capacity and affect the efficiency of the heater causing a burned out heater and an overflow of defrost water onto the store floor.

# Troubleshooting

Trouble	Causes	Solutions
Strange noise under the bottom shelf.	Fan blade broken.	Power off and fix the blade.
Non-refrigerating in spite of normal operation.	Unit off.	Power on.
	Melting process.	Stop melting.
	Refrigerant leaking.	Patch the leak and refill refrigerant.
	Unit failure.	Call Omcan.
Weak air from air curtain, and higher cabinet temperature.	Evaporator blocked by frost.	Increase melting frequency.
	Inside fan damaged.	Replace the fan.
	Too low point of temperature controller.	Adjust the set point.
	Vent blocked by storage.	Remove the storage.
Normal air curtain, but higher cabinet temperature.	Insufficient refrigerant.	Refill the refrigerant.
	Too high set point of temperature controllers.	Adjust the set point for the temperature controller.
	The wind curtain disturbed by strong air flow.	Removing the disturbing factors.
	Ambient temperature or humidity beyond standards.	Improve the conditions.

# Troubleshooting

Melting water overflows.	Heating pipe for melting water damaged.	Replace the heating pipe.
	Water level controller failure.	Replace the water level controller.
	Ambient temperature or humidity beyond standards.	Improve the conditions.
Normal air curtain, but periodical fluctuation of cabinet temperature.	Condenser contaminated.	Clean the condenser.
	Poor venting of the unit.	Improve the venting conditions.
	Heat protection of compressor failure.	Replace the heat protection.
	Capillary is blocked by ice.	Replace the drying filter.
	Temperature controller failure.	Replace the temperature controller.
Water leaks on floor.	Ambient room temperature exceeds 75°F and 55% relative humidity.	Connect appliance drain to floor drain.

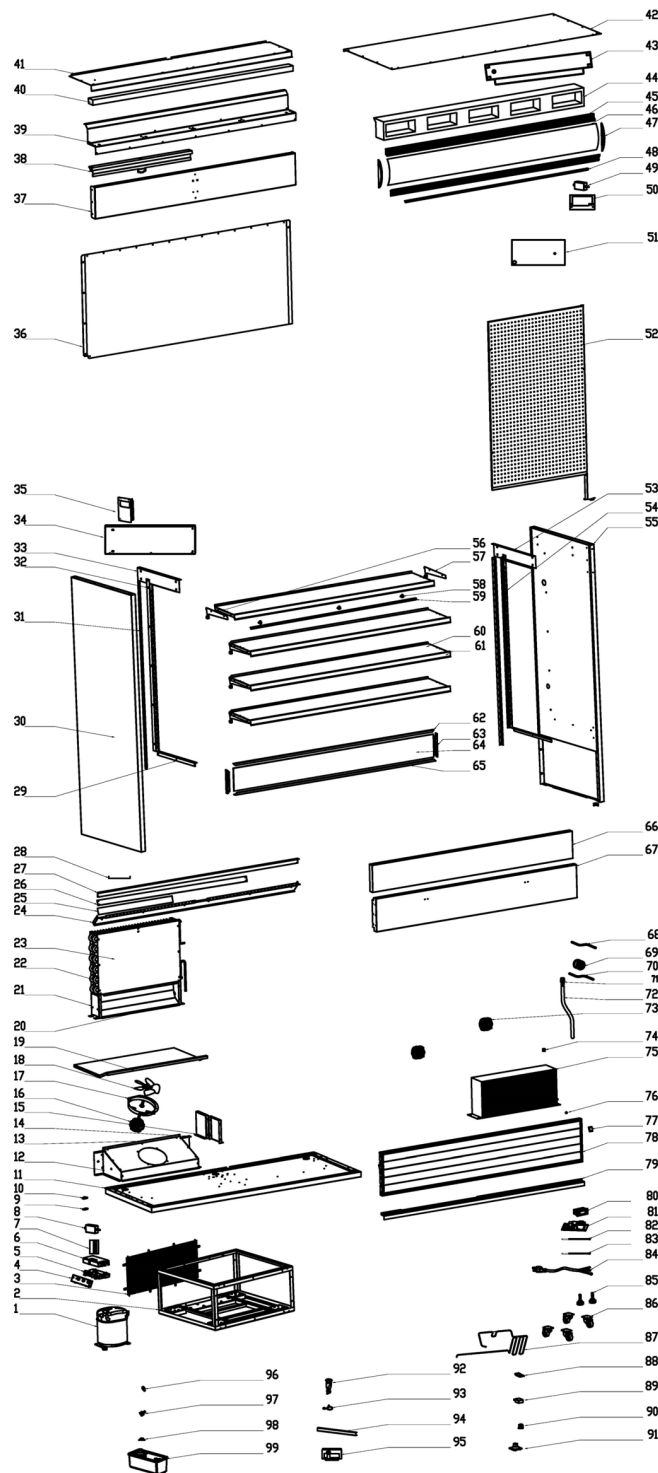
## NOTE

### Following occurrences are not problems:

- The murmur of water is heard when the refrigerator is working. It is a normal occurrence as the coolant is circulating in the system.
- When the weather is damp, condensation might be found on the outside of the refrigerator. It is caused by high humidity. Simply use cloth to wipe it off.

# Parts Breakdown

Model RS-CN-0530 43459



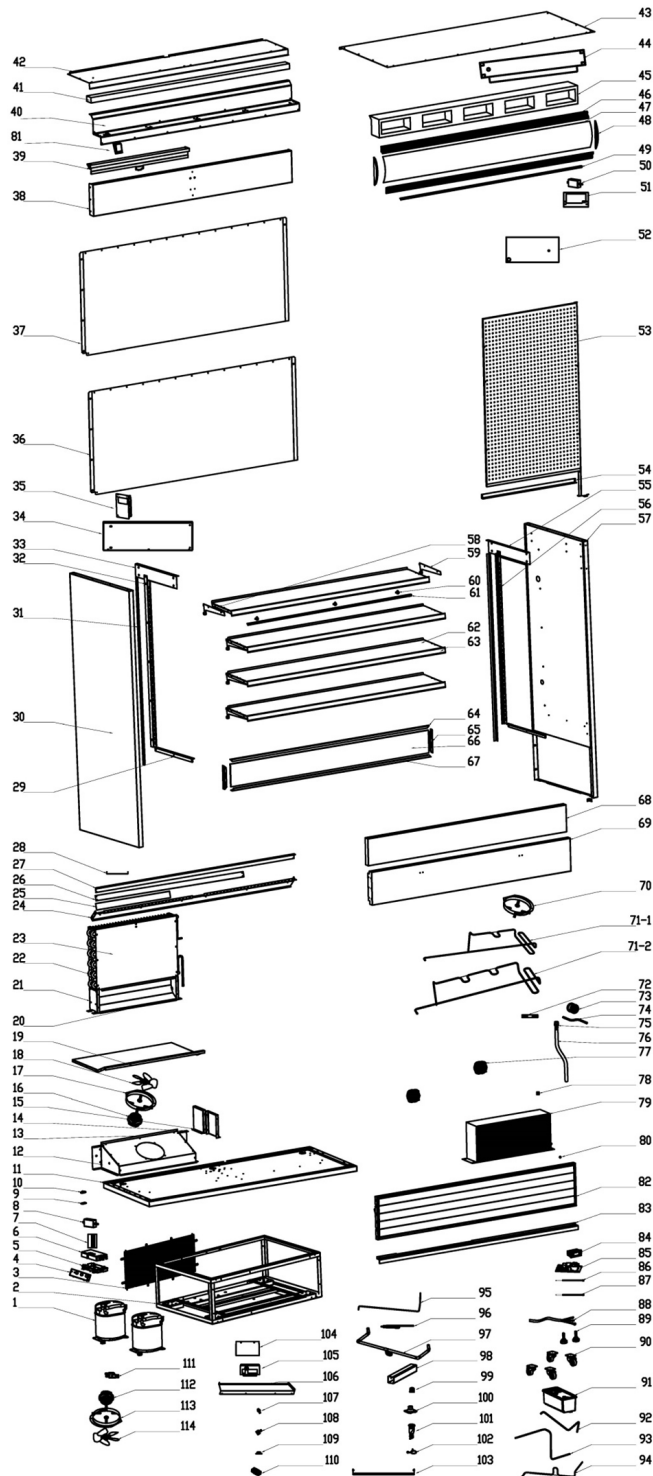
# Parts Breakdown

## Model RS-CN-0530 43459

Item No.	Description	Position	Item No.	Description	Position	Item No.	Description	Position
AP390	Compressor for 43459	1	AP392	Condensator Right Windshield for 43459	34	AP398	Capillary Filter Connection Tube for 43459	68
AP391	Base for 43459	2	AP393	Left Windshield of Condenser for 43459	35	70106	Dry Filter for 43459	69
60599	Mesh Guard in Base for 43459	3	AO869	Upper Back Plate for 43459	36	AP399	Joint Pipe of Dry Filter for 43459	70
AO860	Wiring Box for 43459	4	AO870	Upper Front Board for 43459	37	AL576	Drain Joint for 43459	71
61167	Circuit Board Box for 43459	5	66097	Night Curtain for 43459	38	60668	Drain Pipe for 43459	72
60594	Cover of Circuit Board Box for 43459	6	AP394	Damper of Upper Air Outlet for 43459	39	AP400	Condenser Fan Motor for 43459	73
AO861	Cap of Juncting Box for 43459	7	66099	Honeycomb Panel for 43459	40	60633	Side Panel Connector for 43459	74
AO862	LED Transformer for 43459	8, 49	AO872	Cover of Upper Air Outlet for 43459	41	AP401	Condenser for 43459	75
61246	Wire Clip Holder for 43459	9	AO873	Upper Cover Plate for 43459	42	68301	Strong Magnet for 43459	76
66095	Wire Clip Cover for 43459	10	67647	The Left of the Evaporator Water Box for 43459	43	71514	Switch (Green) for 43459	77
60601	Foam of Base Plate for 43459	11	60698	Lining Foam for 43459	44	AP402	Switch Cover for 43459	78
60602	Left Board of Evaporator Cover for 43459	12	60626	Lampshade Frame for 43459	45	60660	Lower Front Waling for 43459	79
60603	Evaporator Cover for 43459	13	60627	Lampshade for 43459	46	AI123	Main Board for 43459	80
60643	Right Plate of Evaporator Motor for 43459	14	60628	Holder of Lampshade Frame for 43459	47	67648	Temperature Display for 43459	80
60632	Middle Support Pillar of Air Intake for 43459	15	AO874	Constant Voltage Patch LED Light for 43459	48	60666	Temperature Probe for 43459	81
AL374	Evaporator Fan Motor for 43459	16	68392	Water Box Bracket for 43459	50	AO887	Defrost Probe for 43459	82
60641	Fan Guard for 43459	17	60655	Water Box for 43459	51	AC057	Power Cord for 43459	83
60640	Fan Blade for 43459	18	AO876	Ventilated Board for 43459	52	60672	Feet for 43459	84
AO863	Plate of Left/Right Air Intake for 43459	19	60629	Parry of Right Lining Plate for 43459	53	AL357	Castor for 43459	85
60605	Evaporator Ventilation Damper for 43459	20	AO877	Right Support Pillar of Shelf for 43459	54	60653	High Pressure Evaporation Tube for 43459	86
60604	Evaporator Holder for 43459	21	AO878	Foam of Right Board for 43459	55	79359	Cover of Junction Box for 43459	87
AO864	Evaporator for 43459	22	AP395	Left Support Pillar of Shelf for 43459	56	61244	Terminal Box for 43459	88
60607	Evaporator Damper for 43459	23	AP396	Right Support Pillar of Shelf for 43459	57	60590	PVC Trucking for 43459	89
60608	Evaporator Wind Screen for 43459	24	AD500	Jump Ring of LED for 43459	58	60670	PPR Tube Strap for 43459	90
60648	Lower Front Baffle Assembly for 43459	25	AO881	Constant Voltage Patch LED Light for 43459	59	79304	Pipe for Evaporated Water for 43459	91
60617	Rear Foam Baffle for 43459	26	AO882	General Assembly for Shelves for 43459	60	AO889	Water Pipe for 43459	92
66096	Back Upper Crosspiece for 43459	27	60639	Price Tag Holder for 43459	61	AL376	Circlip for 43459	93
AO865	Filter Pressure Plate for 43459	28	60644	Decorating Strip of Glass Deflector for 43459	62	60652	High Pressure Evaporation Tube Pressure Plate for 43459	94
60610	Parry of Lower Air Intake for 43459	29	60647	Strip of Glass Deflector 2 for 43459	63	AP403	Switch Display Bracket for 43459	95
AO866	Foam of Left Side Board for 43459	30	67644	Glass Deflector for 43459	64	AL306	Pagoda Water Mouth-Processing for 43459	96
60613	Dead Plate of Rear Foam for 43459	31	60645	Strip of Glass Deflector for 43459	65	68398	Copper Connection for 43459	97
AO867	Left Support Pillar of Shelf for 43459	32	60649	PE for Lower Board for 43459	66	60669	Pressing Plate of Dry Filter for 43459	98
60615	Parry of Right Lining Plate for 43459	33	AP397	Lower Front Board for 43459	67	60587	Water Receiver for 43459	99

# Parts Breakdown

Model RS-CN-0700 41469



# Parts Breakdown

## Model RS-CN-0700 41469

Item No.	Description	Position	Item No.	Description	Position	Item No.	Description	Position
AP414	Compressor for 41469	1	AP418	Left Windshield of Condenser for 41469	35	AP421	Left High Voltage Evaporating Pipe for 41469	71-2
AP415	Base for 41469	2	AO896	Lower Back Plate for 41469	36	AO890	The Bracket on the Water Pipe for 41469	72
70133	Mesh Guard in Base for 41469	3	AO897	Upper Back Plate for 41469	37	70106	Dry Filter for 41469	73
AO860	Wiring Box for 41469	4	AO898	Upper Front Board for 41469	38	AP422	Joint Pipe of Dry Filter for 41469	74
61167	Circuit Board Box for 41469	5	66104	Night Curtain for 41469	39	AL576	Drain Joint for 41469	75
60594	Cover of Circuit Board Box for 41469	6	AO899	Damper of Upper Air Outlet for 41469	40	60668	Drain Pipe for 41469	76
AO861	Cap of Juncting Box for 41469	7	67660	Honeycomb Panel for 41469	41	60633	Side Plate Connector for 41469	78
AO862	LED Transformer for 41469	8, 50	AO900	Cover of Upper Air Outlet for 41469	42	AP423	Condenser for 41469	79
60676	Wire Clip Holder for 41469	9	AP419	Upper Cover Plate for 41469	43	68301	Strong Magnet for 41469	80
60677	Wire Clip Cover for 41469	10	AO902	The Left of the Evaporator Water Box for 41469	44	71514	Switch (Green) for 41469	81
67653	Foam of Base Plate for 41469	11	60698	Lining Foam for 41469	45	AO910	Switch Cover for 41469	82
60680	Left Board of Evaporator Cover for 41469	12	70141	Lampshade Frame for 41469	46	70127	Lower Front Waling for 41469	83
70154	Evaporator Cover for 41469	13	70142	Lampshade for 41469	47	67648	Temperature Display for 41469	84
60681	Left Plate of Evaporator Motor for 41469	14	60628	Holder of Lampshade Frame for 41469	48	AP424	Main Circuit Board for 41469	85
60684	Middle support Pillar of Air Intake for 41469	15	AO903	Constant Voltage Patch LED Light for 41469	49	60666	Temperature Probe for 41469	86
AO892	Evaporator Fan Motor for 41469	16, 77	68392	Water Box Bracket for 41469	51	AO887	Defrost Probe for 41469	87
60641	Fan Guard for 41469	17, 70	60655	Water Box for 41469	52	AO911	Power Cord for 41469	88
60640	Fan Blade for 41469	18	AO904	Ventilated Board for 41469	53	60672	Feet for 41469	89
AO893	Plate of Left/Right Air Intake for 41469	19	67662	Back Support for Board at Air Intake for 41469	54	AL357	Castor for 41469	90
67654	Evaporator Ventilation Damper for 41469	20	60629	Parry of Right Lining Plate for 41469	55	67651	Water Connection Box Component for 41469	91
60604	Evaporator Holder for 41469	21	AO877	Right Support Pillar of Shelf for 41469	56	AP425	Connecting Tube for Right Condenser and Dry Filter for 41469	92
AP416	Evaporator for 41469	22	AO878	Foam of Right Board for 41469	57	AP426	Connecting Tube for Left Condenser and Dry Filter for 41469	93
67655	Evaporator Damper for 41469	23	AO905	Left/Right Support Pillar of Shelf for 41469	58, 59	AP427	Right Air Return Duct for 41469	94
67656	Evaporator Wind Screen for 41469	24	AD500	Jump Ring of LED for 41469	60	AP428	Left Air Return Duct for 41469	95
70153	Lower Front Baffle Assembly for 41469	25	AO906	Constant Voltage Patch LED Light for 41469	61	AP429	Tee Joint for 41469	96
70120	Rear Foam Baffle for 41469	26	AO907	General Assembly for Shelves for 41469	62	AO888	PVC Tube for 41469	97
70143	Back Upper Crosspiece for 41469	27	67665	Price Tag Holder for 41469	63	60590	PVC Trucking for 41469	98
AO865	Filter Pressure Plate for 41469	28	70151	Decorating Strip of Glass Deflector for 41469	64	60670	PPR Tube Strap for 41469	99
60610	Parry of Lower Air Intake for 41469	29	70149	Strip of Glass Deflector 2 for 41469	65	79304	Pipe for Evaporated Water for 41469	100
AO866	Foam of Left Side Board for 41469	30	67666	Glass Deflector for 41469	66	AO889	Water Pipe for 41469	101
60613	Dead Plate of Rear Foam for 41469	31	60645	Strip of Glass Deflector for 41469	67	AL376	Circlip for 41469	102
AO867	Left Support Pillar of Shelf for 41469	32	67667	PE for Lower Board for 41469	68	60652	High Pressure Evaporation Tube Pressure Plate for 41469	103
60615	Parry of Right Lining Plate for 41469	33	AO908	Lower Front Board for 41469	69	AP430	Baffle Board of Evaporator Motor for 41469	104
AP417	Condensator Right Windshield for 41469	34	AP420	Right High Voltage Evaporating Pipe for 41469	71-1	AP403	Switch Display Bracket for 41469	105

# Parts Breakdown

---

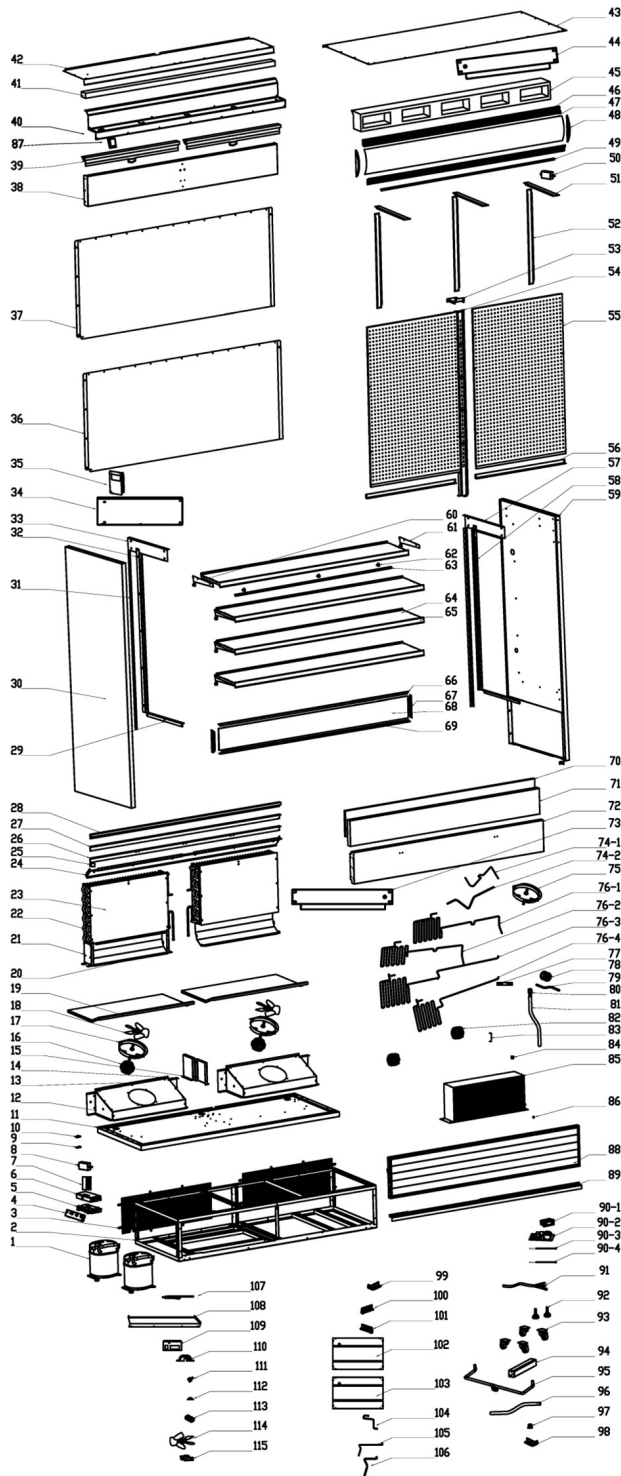
## Model RS-CN-0700 41469

Item No.	Description	Position	Item No.	Description	Position	Item No.	Description	Position
AP431	Top Baffle Board of Condenser for 41469	106	60669	Pressing Plate of Dry Filter for 41469	109	70111	Fan Motor for 41469	112
AL306	Pagoda Water Mouth-Processing for 41469	107	AP432	WAGO Wire Connector for 41469	110	60932	Fan Guard for 41469	113
68398	Copper Connection for 41469	108	AP433	American Plug for 41469	111	60933	Fan Blade for 41469	114



# Parts Breakdown

Model RS-CN-1050 43460



# Parts Breakdown

## Model RS-CN-1050 43460

Item No.	Description	Position	Item No.	Description	Position	Item No.	Description	Position
AP414	Compressor for 43460	1	AP436	Left Windshield of Condenser for 43460	35	60714	PE for Lower Board for 43460	71
AP434	Base for 43460	2	AO914	Lower Back Plate for 43460	36	AO926	Lower Front Board for 43460	72
60599	Mesh Guard in Base for 43460	3	AO915	Upper Back Plate for 43460	37	AO927	The Right Side of the Evaporator Water Box for 43460	73
AO860	Wiring Box for 43460	4	AO916	Upper Front Board for 43460	38	AP439	Right Joint Pipe of Compressor for 43460	74-1
61167	Circuit Board Box for 43460	5	60692	Night Curtain for 43460	39	AP440	Left Joint Pipe of Compressor for 43460	74-2
60594	Cover of Circuit Board Box for 43460	6	AO917	Damper of Upper Air Outlet for 43460	40	60641	Fan Guard for 43460	75
AO861	Cap of Juncting Box for 43460	7	60694	Honeycomb Panel for 43460	41	AP441	Right Bottom High Pressure Evaporating Tube for 43460	76-1
AO862	LED Transformer for 43460	8, 50	AO918	Cover of Upper Air Outlet for 43460	42	AP442	Left Bottom High Pressure Evaporating Tube for 43460	76-2
60676	Wire Clip Holder for 43460	9	AO919	Upper Cover Plate for 43460	43	AP443	Right Top High Pressure Evaporating Tube for 43460	76-3
60677	Wire Clip Cover for 43460	10	AO920	The Left of the Evaporator Water Box for 43460	44	AP444	Left Top High Pressure Evaporating Tube for 43460	76-4
60679	Foam of Base Plate for 43460	11	60698	Lining Foam for 43460	45	AO929	The Bracket on the Water Pipe for 43460	77
60680	Left Board of Evaporator Cover for 43460	12	60700	Lampshade Frame for 43460	46	70106	Dry Filter for 43460	78
60603	Evaporator Cover for 43460	13	60701	Lampshade for 43460	47	AP422	Joint Pipe of Dry Filter for 43460	79
60681	Left Plate of Evaporator Motor for 43460	14	60628	Holder of Lampshade Frame for 43460	48	AO930	Drain Joint for 43460	80
60684	Middle Support Pillar of Air Intake for 43460	15	AO921	LED in Light Box for 43460	49	AO931	Drain Pipe for 43460	81
AO892	Evaporator Fan Motor for 43460	16	60696	Vertical Plate of Upper Foam for 43460	51	70111	Fan Motor for 43460	82
60932	Fan Guard for 43460	17	67684	Vertical Plate of Back Foam for 43460	52	AO932	Under-Wear Pipe Bracket for 43460	83
60640	Fan Blade for 43460	18	60686	Holding Plate of Back Foam Crosspiece for 43460	53	60633	Side Panel Connector for 43460	84
AO875	Plate of Left/Right Air Intake for 43460	19	AO922	Middle Support Pillar of Shelf for 43460	54	AP423	Condenser for 43460	85
60605	Evaporator Ventilation Damper for 43460	20	AO923	Ventilated Board for 43460	55	68301	Strong Magnet for 43460	86
60604	Evaporator Holder for 43460	21	60703	Back Support for Board at Air Intake for 43460	56	71514	Switch (Green) for 43460	87
AO864	Evaporator for 43460	22	60629	Parry of Right Lining Plate for 43460	57	AO933	Switch Cover for 43460	88
60607	Evaporator Damper for 43460	23	AO877	Right Support Pillar of Shelf for 43460	58	60721	Lower Front Waling for 43460	89
60683	Evaporator Wind Screen for 43460	24	AO878	Foam of Right Board for 43460	59	67648	Temperature Display for 43460	90-1
AO912	Shock-Absorbing Parts for 43460	25	AO905	Left/Right Support Pillar of Shelf for 43460	60, 61	AP424	Main Circuit Board for 43460	90-2
67676	Crosspiece of Back Foam for 43460	26	AP437	Jump Ring of LED for 43460	62	AO934	Temperature Probe for 43460	90-3
66105	Back Upper Crosspiece for 43460	27	AO924	LED for 43460	63	AO887	Defrost Probe for 43460	90-4
67677	Thicker Crosspiece of Back Ventilated Board for 43460	28	AP438	General Assembly for Shelves for 43460	64	AC057	Power Cord for 43460	91
60610	Parry of Lower Air Intake for 43460	29	60709	Price Tag Holder for 43460	65	60672	Feet for 43460	92
AO866	Foam of Left Side Board for 43460	30	60712	Decorating Strip of Glass Deflector for 43460	66	AL357	Castor for 43460	93
60613	Dead Plate of Rear Foam for 43460	31	60710	Strip of Glass Deflector 2 for 43460	67	60590	PVC Trucking for 43460	94
AO867	Left Support Pillar of Shelf for 43460	32	67686	Glass Deflector for 43460	68	AO888	PVC Pipe for 43460	95
60615	Parry of Right Lining Plate for 43460	33	60645	Strip of Glass Deflector for 43460	69	60668	Drain Pipe for 43460	96
AP435	Right Windshield of Condenser for 43460	34	60713	Lower Front Board Components for 43460	70	60670	PPR Tube Strap for 43460	97

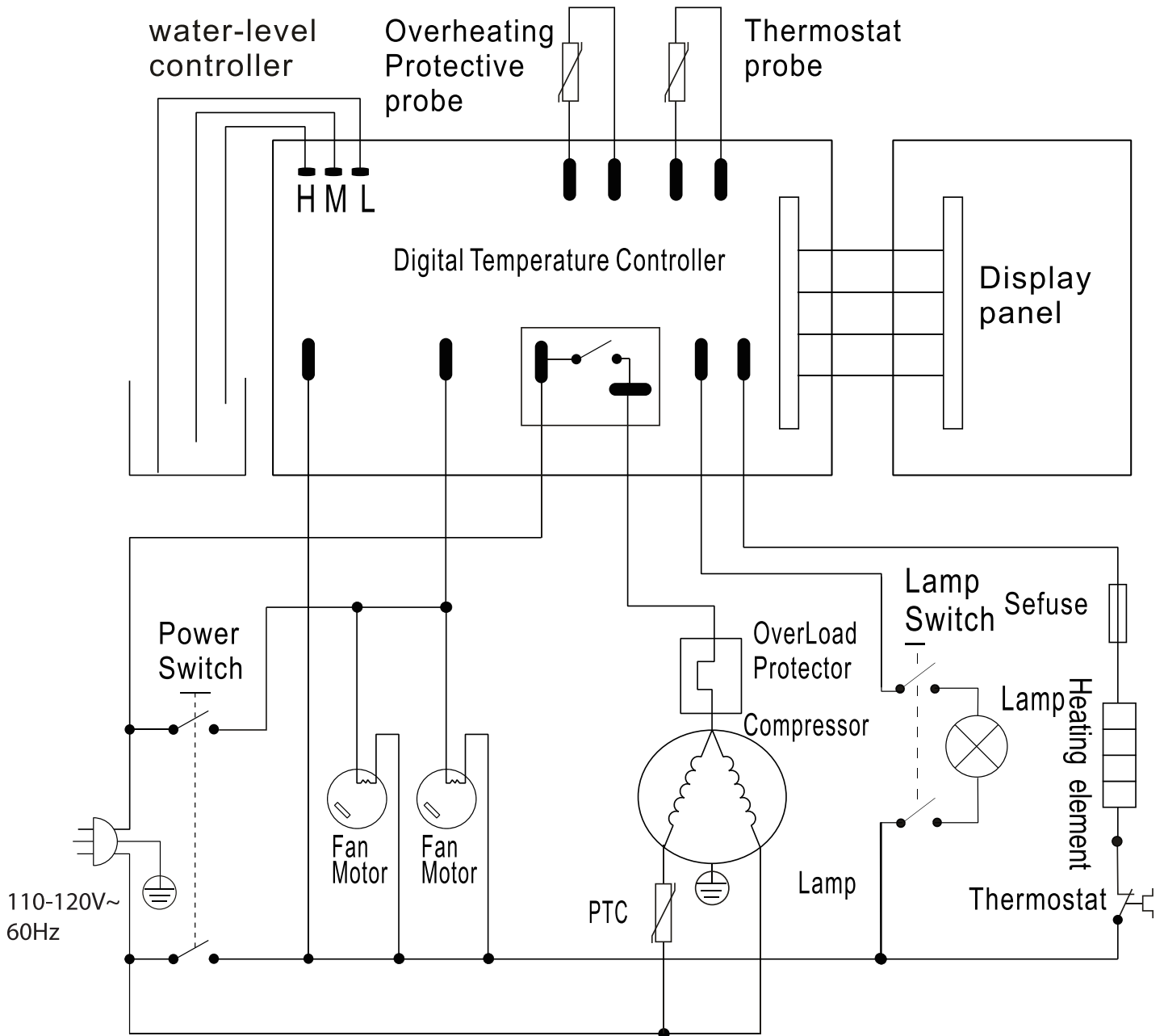
# Parts Breakdown

## Model RS-CN-1050 43460

Item No.	Description	Position	Item No.	Description	Position	Item No.	Description	Position
AP445	Right Rear Bracket of Evaporating Pan for 43460	98	AP451	High Pressure Evaporation Connect Tube for 43460	104	AO865	Filter Pressure Plate for 43460	110
AP446	Right Front Bracket of Evaporating Pan for 43460	99	AP452	Connecting Tube for Right Condenser and Dry Filter for 43460	105	68398	Copper Connection for 43460	111
AP447	Left Rear Bracket of Evaporating Pan for 43460	100	AP453	Connecting Tube for Left Condenser and Dry Filter for 43460	106	60669	Pressing Plate of Dry Filter for 43460	112
AP448	Left Front Bracket of Evaporating Pan for 43460	101	AP429	Tee Joint for 43460	107	AP432	WAGO Wire Connector for 43460	113
AP449	Bottom Evaporating Pan Assembly for 43460	102	AP454	Top Baffle Board of Condenser for 43460	108	60933	Fan Blade for 43460	114
AP450	Top Evaporating Pan Assembly for 43460	103	AP403	Switch Display Bracket for 43460	109	AP433	American Plug for 43460	115

# Electrical Schematics

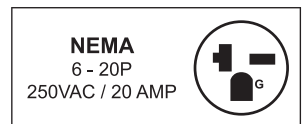
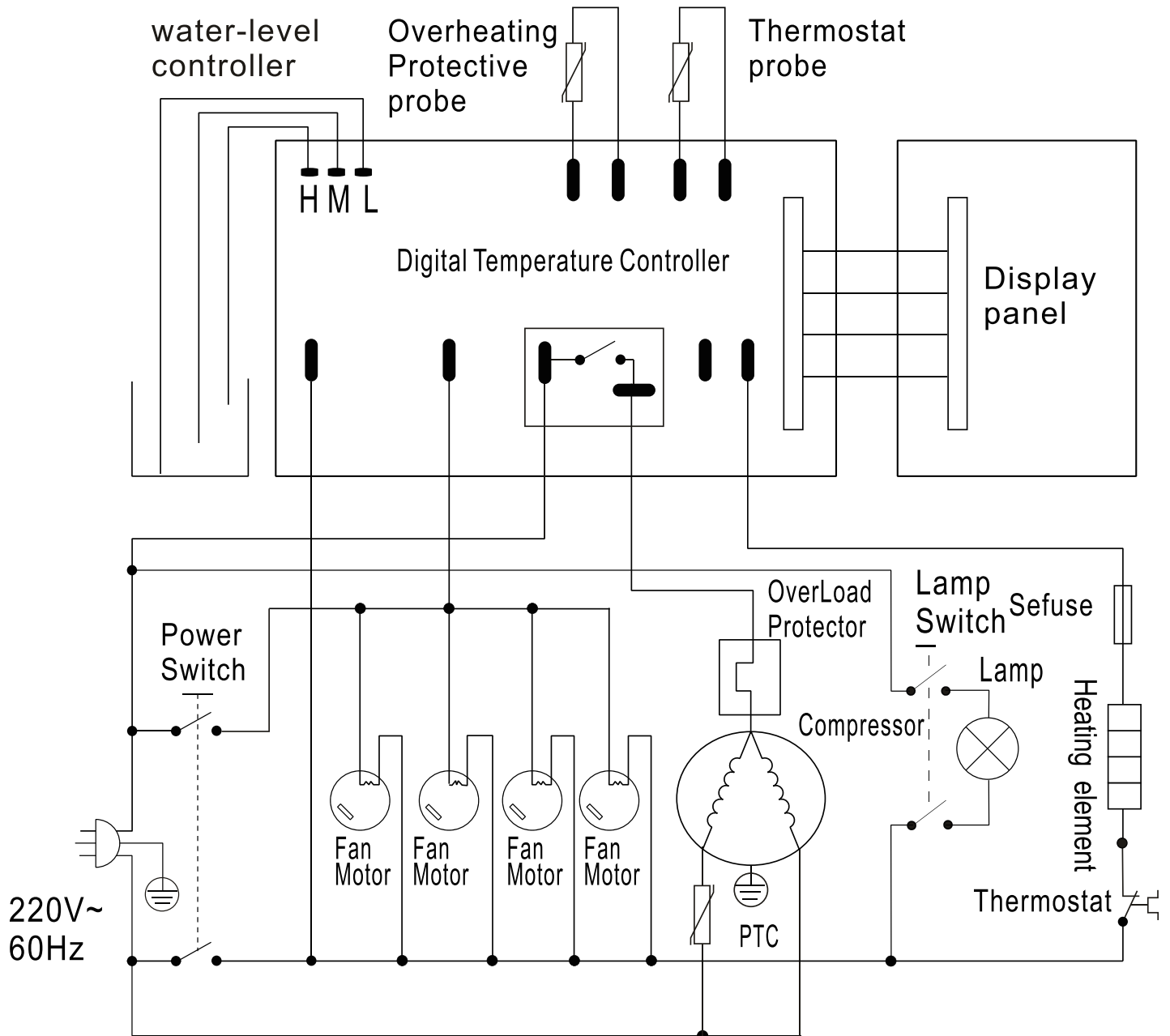
Model RS-CN-0530 43459



NEMA  
5 - 20P  
125VAC / 20 AMP

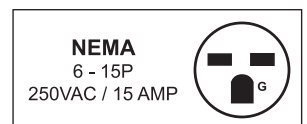
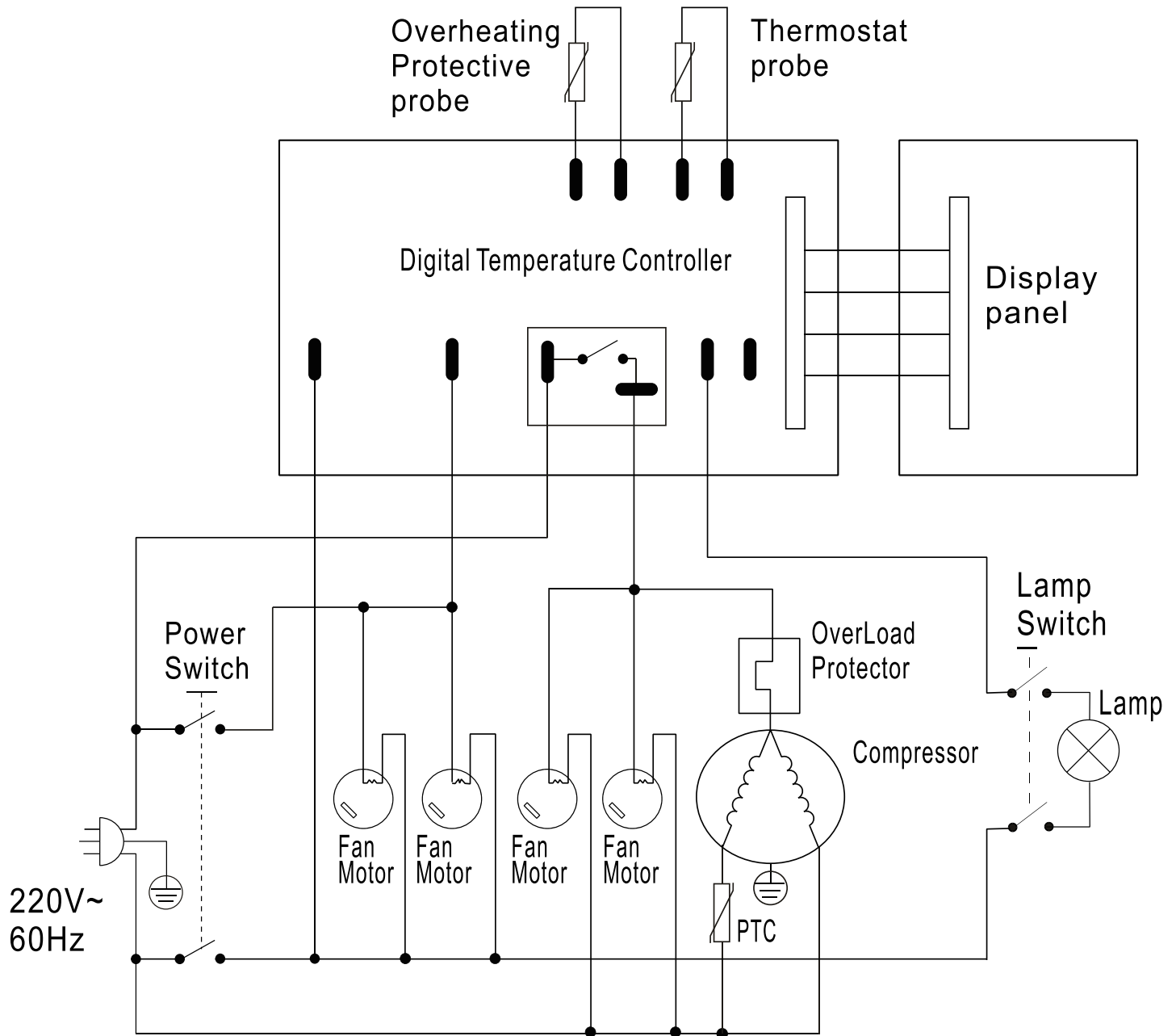
# Electrical Schematics

Model RS-CN-0700 41469



# Electrical Schematics

Model RS-CN-1050 43460





# Warranty Registration

Thank you for purchasing an Omcan product. To register your warranty for this product, complete the information below, tear off the card at the perforation and then send to the address specified below. You can also register online by visiting:

Merci d'avoir acheté un produit Omcan. Pour enregistrer votre garantie pour ce produit, complétez les informations ci-dessous, détachez la carte au niveau de la perforation, puis l'envoyer à l'adresse spécifiée ci-dessous. Vous pouvez également vous inscrire en ligne en visitant:

Gracias por comprar un producto Omcan usted. Para registrar su garantía para este producto, complete la información a continuación, cortar la tarjeta en la perforación y luego enviarlo a la dirección indicada a continuación. También puede registrarse en línea en:

<https://omcan.com/warranty-registration/>

For mailing in Canada

Pour postale au Canada

Por correo en Canadá

**OMCAN**

PRODUCT WARRANTY REGISTRATION

3115 Pepper Mill Court,  
Mississauga, Ontario  
Canada, L5L 4X5

For mailing in the US

Pour diffusion aux États-Unis

Por correo en los EE.UU.

**OMCAN**

PRODUCT WARRANTY REGISTRATION

4450 Witmer Industrial Estates, Unit 4,  
Niagara Falls, New York  
USA, 14305

*or email to: [service@omcan.com](mailto:service@omcan.com)*



Purchaser's Information

Name: \_\_\_\_\_

Address: \_\_\_\_\_

City: \_\_\_\_\_ Province or State: \_\_\_\_\_ Postal or Zip: \_\_\_\_\_

Country: \_\_\_\_\_

Dealer from which Purchased: \_\_\_\_\_

Dealer City: \_\_\_\_\_ Dealer Province or State: \_\_\_\_\_

Invoice: \_\_\_\_\_

Model Name: \_\_\_\_\_ Model Number: \_\_\_\_\_

Machine Description: \_\_\_\_\_

Date of Purchase (MM/DD/YYYY): \_\_\_\_\_

Would you like to extend the warranty?  Yes  No

Company Name: \_\_\_\_\_

Telephone: \_\_\_\_\_

Email Address: \_\_\_\_\_

Type of Company:

Restaurant  Bakery  Deli

Butcher  Supermarket  Caterer

Institution (*specify*): \_\_\_\_\_

Other (*specify*): \_\_\_\_\_

Serial Number: \_\_\_\_\_

Date of Installation (MM/DD/YYYY): \_\_\_\_\_

**Thank you for choosing Omcan | Merci d'avoir choisi Omcan | Gracias por elegir Omcan**



Since 1951 Omcan has grown to become a leading distributor of equipment and supplies to the North American food service industry. Our success over these many years can be attributed to our commitment to strengthen and develop new and existing relationships with our valued customers and manufacturers. Today with partners in North America, Europe, Asia and South America, we continually work to improve and grow the company. We strive to offer customers exceptional value through our qualified local sales and service representatives who provide convenient access to over 6,500 globally sourced products.

---

Depuis 1951 Omcan a grandi pour devenir un des “leaders” de la distribution des équipements et matériel pour l’industrie des services alimentaires en Amérique du Nord. Notre succès au cours de ces nombreuses années peut être attribué à notre engagement à renforcer et à développer de nouvelles et existantes relations avec nos clients et les fabricants de valeur. Aujourd’hui avec des partenaires en Amérique du Nord, Europe, Asie et Amérique du Sud, nous travaillons continuellement à améliorer et développer l’entreprise. Nous nous efforçons d’offrir à nos clients une valeur exceptionnelle grâce à nos ventes locales qualifiées et des représentants de service qui offrent un accès facile à plus de 6500 produits provenant du monde entier.

---

Desde 1951 Omcan ha crecido hasta convertirse en un líder en la distribución de equipos y suministros de alimentos en América del Norte industria de servicios. Nuestro éxito en estos años se puede atribuir a nuestro compromiso de fortalecer y desarrollar nuevas relaciones existentes con nuestros valiosos clientes y fabricantes. Hoy con socios de América del Norte, Europa, Asia y América del Sur, que trabajan continuamente para mejorar y crecer la empresa. Nos esforzamos por ofrecer a nuestros clientes valor excepcional a través de nuestro local de ventas y representantes de los servicios que proporcionan un fácil acceso a más de 6,500 productos con origen a nivel mundial.

