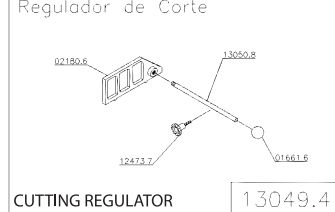
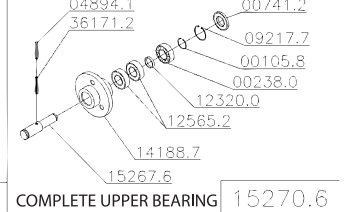
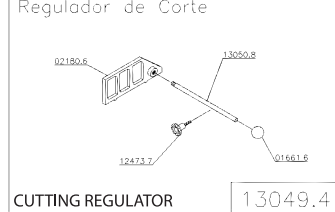
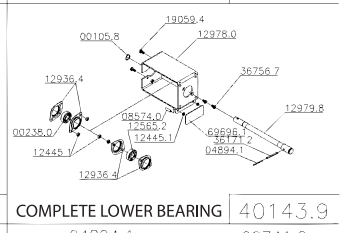
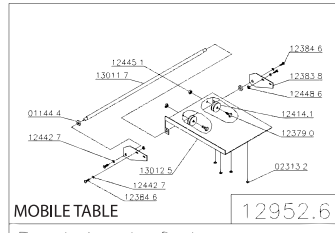
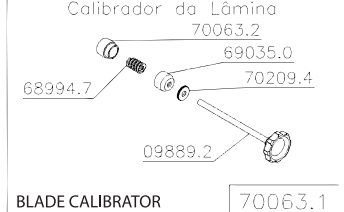
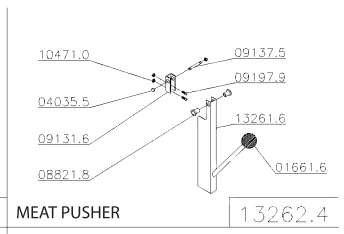
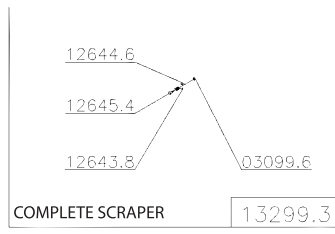
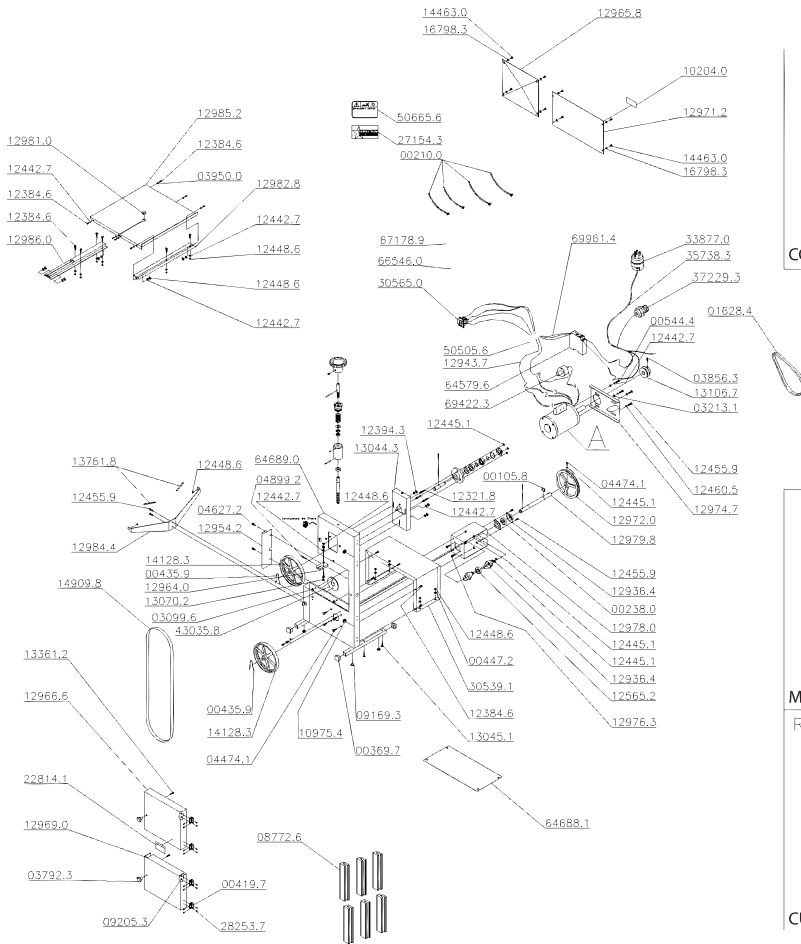


Parts Breakdown

Model BS-BR-1880 10274



Parts Breakdown

Model BS-BR-1880 10274

Item No.	Description	Position	Item No.	Description	Position	Item No.	Description	Position
AF877	Shaft Retainer Ring 20x1.2 Din 471 for 10274	00105.8	38458	Large Rubber Ring for 10274	10975.4	38418	Blade Cover for 10274	12986.0
27688	Clamp K22 (T 50R) for 10274	00210.0	38426	SK/SKL Divider for 10274	12320.0	38471	Shaft Axis for 10274	13011.7
16396	Ball Bearing 6204 Z for 10274	00238.0	38451	Parafuso C/Zinc for 10274	12321.8	AI940	CS Mobile Table for 10274	13012.5
38255	Pedal Caps 20x20 for 10274	00369.7	38475	PFS M8x30 Din 965 Inox for 10274	12379.0	38434	Stretching Plate for 10274	13044.3
38417	Hinges 2" for 10274	00419.7	38472	Bearing Plate SK/L/10274/L for 10274	12383.8	38455	Screw M6x40 Din 933 ZB for 10274	13045.1
21836	Clip for 10274	00435.9	16416	Screw M6x12 Din 933 Stainless Steel for 10274	12384.6	76402	Complete Cutting Regulator Optional for 10274	13049.4
38453	Motor Pulley (Primer) for 10274	00447.2	38433	PCAN M6 Din 985 ZB for 10274	12394.3	21837	Adjustable Guide 1/2x318mm for 10274	13050.8
38112	Screw 1 4x5 8 for 10274	00544.4	38474	Double Pulley SK/SKL for 10274	12414.1	16427	Screw M6x25 for 10274	13070.2
38470	Cushioning Ring for 10274	01144.4	16419	Washer L.A6 4 125 Inox for 10274	12442.7	38442	Motor Pulley for 10274	13106.7
20455	Belt A 26 for 10274	01628.4	16421	Screw Nut M8 934 Inox for 10274	12445.1	38483	Pusher for 10274	13261.6
21838	Sphere with Hole 1/2 for 10274	01661.6	38281	Screw Nut M6 Din 934 Inox for 10274	12448.6	31402	Complete Pusher for 10274	13262.4
21835	Cut Regulator for 10274	02180.6	16422	Screw M8x20 Din 933 Stainless Steel for 10274	12455.9	16430	Complete Scraper for 10274	13299.3
38469	Cover for 10274	02313.2	16423	Washer L.A8.4 Stainless Steel for 10274	12460.5	16432	Screw 1/4x1/2 for 10274	13361.2
38180	Screw Nut M6 Din 934 ZB for 10274	03099.6	38477	Knob M8x30 for 10274	12473.7	38429	Profile Anti Noise for 10274	13761.8
16403	Washer L 3/8 Stainless Steel for 10274	03213.1	38448	Bearing 6204 RS1 Din 625 for 10274	12565.2	44761	10274 Wheel Diam. 225 for 10274	14128.3
38464	Door Knob for 10274	03792.3	78946	V Scraper for 10274	12643.8	38503	Alainham Bearing (White) for 10274	14188.7
78587	PFS M6x16 Din 916 Fosf. for 10274	03856.3	78947	V Shaver for 10274	12644.6	16435	Screw M4x10 for 10274	14463.0
30236	Washer L.A6 4 for 10274	03950.0	78948	V Pine FO Scraper for 10274	12645.4	78987	Band Saw Blade 74"5/8" 6TPI MK5/8x6 for 10274	14909.8
30341	Screw Nut 1 4 for 10274	04035.5	38446	Flanged Bearing for 10274	12936.4	38504	Upper Tree for 10274	15267.6
27700	Screw M8x20 Din 933 ZB for 10274	04474.1	78951	Key Switch Complete for 10274	12943.7	38501	Complete Aligning Bearing for 10274	15270.6
38432	Knob for Shield for 10274	04627.2	17884	Blade Cover for 10274	12954.2	30048	Cable 3x0.75mm for 10274	16798.3
14801	Central Shaft Pin 4x50 Din 1481 for 10274	04894.1	24201	Blade Guide for 10274	12964.0	27709	Screw M8x16 Din 933 ZB for 10274	19059.4
38437	Pin Elast.4x20 Din 1481 for 10274	04899.2	38423	Cover TS (White) for 10274	12965.8	38050	Caution Lable for 10274	22814.1
AM609	PFS M8x30 Din 916 Fosf for 10274	08574.0	38460	Door S (White) for 10274	12966.6	27720	Omcan Logo (Machines) for 10274	27154.3
AI939	Rubber Profile U 5x8 Gray for 10274	08772.6	38463	Door I (White) for 10274	12969.0	38344	PFS M4x8 Din 933 Inox for 10274	28253.7
38480	Bushing Guide for 10274	08821.8	38427	Door TI (White) for 10274	12971.2	65895	Inferior Cabinet C / Veneziana for 10274	30539.1
38479	Support for Pusher for 10274	09131.6	38444	Driven Pully for 10274	12972.0	AE677	Key W / Prot.30223 M2FT2FE3V / 19 for 10274	30565.0
38481	Push Shaft for 10274	09137.5	38443	Flange (Branco) for 10274	12974.7	AE578	Plug Americano Certificado 15A (3D224 for 10274	33877.0
38456	Foot 112429 for 10274	09169.3	38449	PFS M8x20 Din 965 ZB for 10274	12976.3	AE579	CB.3x2.1mm2 SJX2M Certif. for 10274	35738.3
38482	Screw M5x10 Din 84 Inox for 10274	09197.9	38447	Bearing Plate (White) for 10274	12978.0	38500	Elast. Pin 6x60 Din 1481 for 10274	36171.2
38404	Nut M4 Din 934 for 10274	09205.3	38445	Lower Shaft for 10274	12979.8	38499	PFS M8x16 Din 965 ZB for 10274	36756.7
27703	Ring 47x1.75 Din 472 for 10274	09217.7	20454	Table Guide for 10274	12981.0	AH548	Cable Press PG21 Black6PCA W/ Red.9A14 for 10274	37229.3
AM610	Handle with Rod M12x135mm for 10274	09889.2	38420	Reinforcement L (White) for 10274	12982.8	AM611	Complete Lower Bearing (Omcan) for 10274	40143.9
27704	ID Label Motor/Resist for 10274	10204.0	38430	Reinforcement (White) for 10274	12984.4	AM612	Thermal Protector Protection for 10274	43035.8
38055	Nut M5 Din 934 Stainless Steel for 10274	10471.0	38419	Stationary Table for 10274	12985.2	46383	Mini Contactor .CWC012-01-30x19 127V 60Hz for 10274	50505.6

Parts Breakdown

Model BS-BR-1880 10274

Item No.	Description	Position	Item No.	Description	Position	Item No.	Description	Position
78551	Cleaning Maintenance Label for 10274	50665.6	AM614	Wago Splicing Connector 2x0.25-4mm2 for 10274	67178.9	AM618	Wiring Harness Compl. for 10274	69961.4
AE582	Rele Sub./Sobretensao Monof. (RM17UBE1 for 10274)	64579.6	AM615	Compression Spring Diam.25x38 for 10274	68994.7	AM619	Blade Tension Calibrator for 10274	70063.1
AI941	Lower Closing Plate for 10274	64688.1	AM616	Calibrator Body for 10274	69035.0	AM620	Calibrator Stop for 10274	70063.2
AI942	CS Structure (White) for 10274	64689.0	AC964	Reset Button for 10274	69422.3	AM621	Handle Stop for 10274	70209.4
AM613	Wago Splicing Connector 5x0.25-4mm2 for 10274	66546.0	AM617	Adjustment Stop Plate for 10274	69696.1			