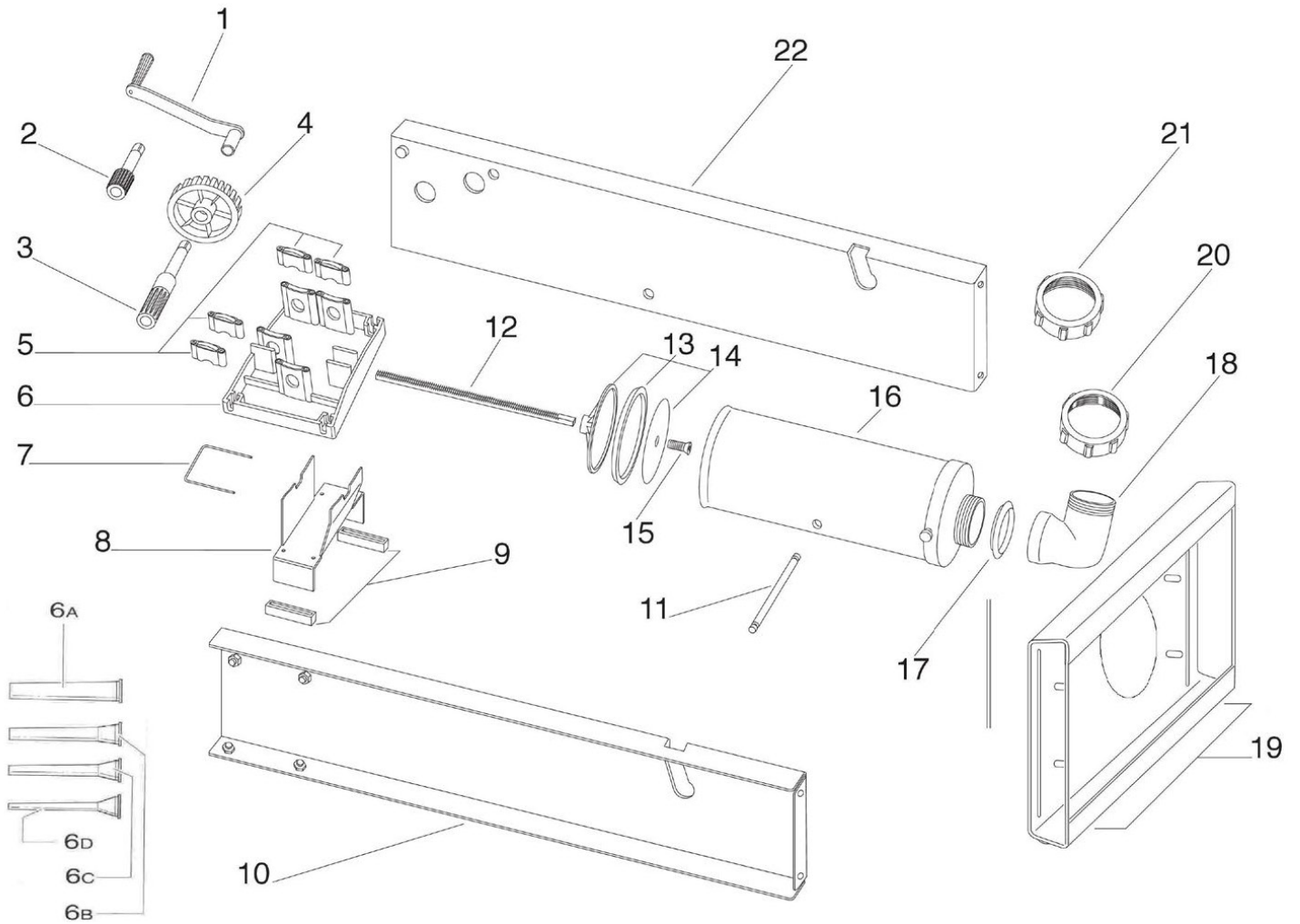


PARTS BREAKDOWN

ITEM

47716



PARTS BREAKDOWN

ITEM

47716

Item No.	Description	Position	Item No.	Description	Position	Item No.	Description	Position
AQ091	Crank for 47716	1	AQ097	Crankcase Gears Vertical Series for 47716	8	AQ105	Corner Junction Gasket Vertical Series for 47716	17
45090	Forward Motion Pin (Slow) for 47716	2	AQ098	Rubber Foot for 47716	9	AQ106	Corner Junction Vertical Series for 47716	18
AQ092	Backward Motion Pin (Fast) for 47716	3	AQ113	5kg Close Casing Vertical for 47716	10	AQ117	Inox Foot Vertical Series for 47716	19
AI869	Large Tooth Gear for 47716	4	AQ114	Crossbar Casing for 47716	11	AQ108	Aluminum Nut for 47716	20
AQ118	Gear (Fast Motion) Steel for 47716	4	AQ115	5kg Rack for 47716	12	AQ109	Ring Nut Vertical Series for 47716	21
AQ093	Couple Clamps for 47716	5	AQ102	Seal Buffer for 47716	13	AQ119	5kg Open Casing Vertical for 47716	22
AQ094	Flange Complete for 47716	6	AQ103	Buffer+Cover for 47716	14	AQ121	5kg Casing Horizontal Inox for 47716	23
AQ095	Set of Filling Tubes for 47716	6a, 6b, 6c, 6d	AQ104	Inox Screw 8x40 for 47716	15			
AQ096	Tube Lock for 47716	7	AQ116	5kg Stainless Steel Tube for 47716	16			