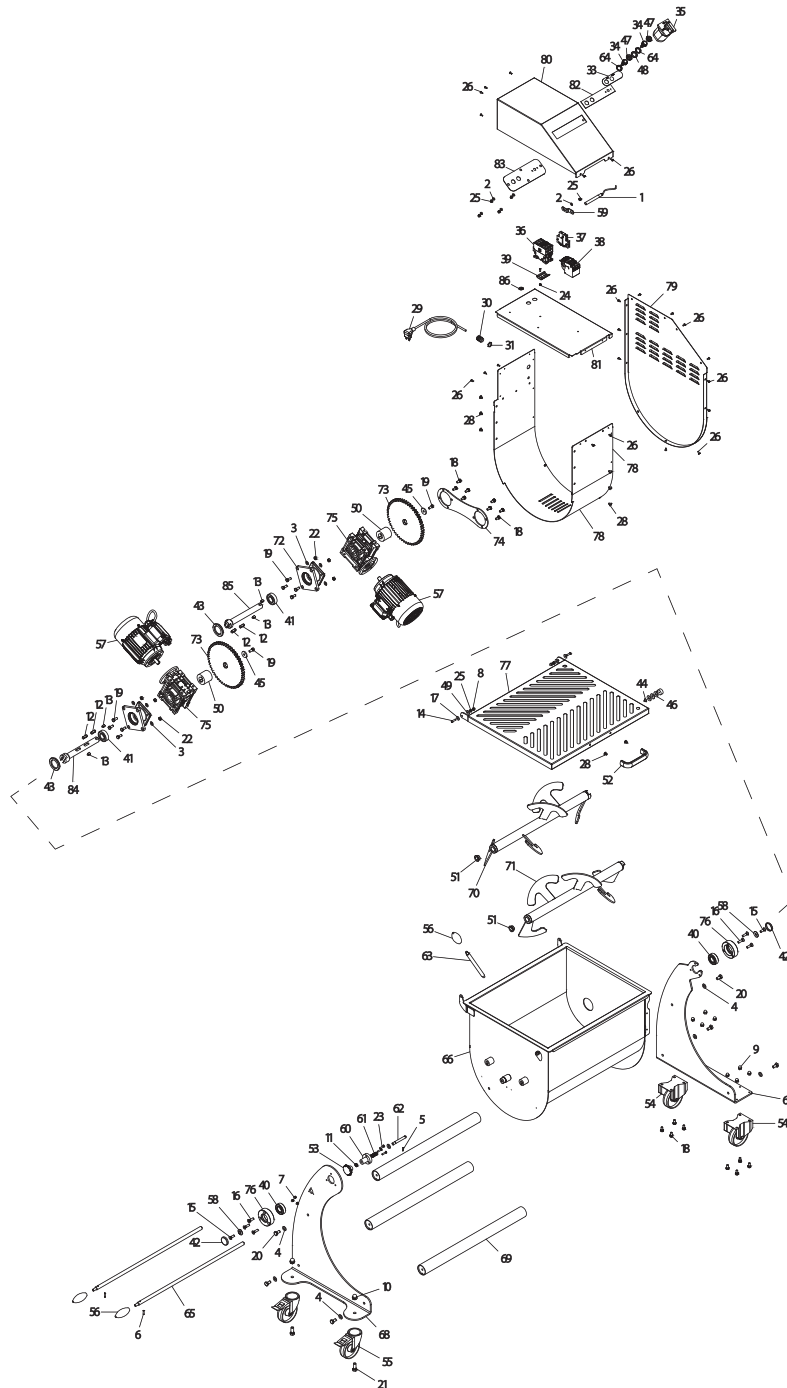


PARTS BREAKDOWN

ITEM	MODEL
48056	MM-IT-0080-ETL



PARTS BREAKDOWN

ITEM	MODEL
48056	MM-IT-0080-ETL

Item No.	Description	Position	Item No.	Description	Position	Item No.	Description	Position
AH077	Magnetic Sensor Head for 48056	1	62667	Flathead CSK Screw Din 963 M5x25 for 48056	23	61610	Zinc Washer M8x30 H4 for 48056	45
62643	Flat Washer Din 125 D 6 for 48056	2	66634	Self-Locking Nut ES Din 982 M 4 High for 48056	24	AP727	Nylon Washer D8,4 D25 H2 for 48056	46
62644	Flat Washer Din 125 D 8 for 48056	3	62668	Self-Lock Nut ES Din 982 M 6 High for 48056	25	AN674	Silicone Capsule x Puls. Steel for 48056	47, 48
62645	Washer Din 125 D 10 for 48056	4	62669	Poeliers M 4x10 Screw for 48056	26	AN183	Dist. Plast 18x6,4x3 Micro ME-IP 10-20 for 48056	49
62646	Elastic Spine Din 1481 3x18 for 48056	5	66633	Screw Poeliers M4x12 for 48056	27	AG289	Dist. Rid-Corona SP47 ME Evo Lav. for 48056	50
62647	Elastic Pin Din 1481 5x20 for 48056	6	60081	Screw Poeliers M6x10 for 48056	28	62621	Bush Flang. JFM-1622-12 TCM-ME for 48056	51
62648	Blind Nut Din 1587 M5 for 48056	7	AM946	Cavo 3x14AWG Nema 6-15 UL 15A 230V 3MT for 48056	29	18961	Handle - Old Style/Large (L-132mm) for 48056	52
61583	Cap Nut Din 1587 M6 for 48056	8	61604	Strain Relief + Nut for 48056	30	79656	Knob for Fixing Container for 48056	53
62650	P Nut Din 1587 M8 for 48056	9	61603	Nut Ott.Nich.PG 11 for 48056	31	61556	Stainless Steel Non-Swivel.Caster D.100 for 48056	54
62651	Blind Nut Din 1587 M 12 for 48056	10	AN181	Round Magnet Diam.25 for 48056	32	61579	Mobile Wheel with Brake D 100 C/ Perno for 48056	55
62652	Nut ES. Din 439 M 10 Low (10 pcs/pk) for 48056	11	AM948	Key Pad IS-SO for 48056	33	78634	Knob IP80/ IP120 for 48056	56
62653	Feathers Din 6885 / A 8x7x28 for 48056	12	AN355	Stainless Steel Button MSM-19 UL Cut Ind for 48056	34	AQ883	Motor M71 HP 0,5 B14 4P 230/60 MN UL CSA for 48056	57
62654	Feathers Din 6885 / AB 8x7x16 for 48056	13	AP102	Rotary Switch 25Amp for 48056	35	61590	Washer SO 1650 Inox for 48056	58
62655	Screw TBEI ISO 7380 M 6x25 for 48056	14	39667	Remote Control Board AF 26-30-00-13 110/230 60Hz for 48056	36	AN385	Supp. Micro Bending Micro 100W 3A UL for 48056	59
AN185	Screw TSPEI Din 7991 M 8x25 for 48056	15	39668	Contacteur Aus Lat x AF 26-30-00-13 ABB for 48056	37	61569	Boat Stops Crade for 48056	60
62658	Screw TSPEI Din 7991 M 8x30 for 48056	16	66632	Terminal Protection 13-16A ABB TF 42-16 for 48056	38	61571	Spring for 48056	61
62660	Washer F Wid Din 9021 D 6x18 for 48056	17	66635	Guide Din Omega H.7mm L= 50mm for 48056	39	61570	Pin for 48056	62
62662	Screw TE Din 933 M8x16 T.F. for 48056	18	61586	Bearing 6205 ZZ for 48056	40	61564	Lever Rod for Container Overturning for 48056	63
62663	X.Screw Din 933 M8x20 for 48056	19	61597	Bearing Reg. SP 7205 ME 80 Evo for 48056	41	AN676	Nut x Silic Cover. Puls. Steel for 48056	64
62664	Screw TE Din 933 M 10x20 T.F. for 48056	20	61589	Cap 40/7/C Pulley 1C SO1650 for 48056	42	61563	Blade Rod for 48056	65
62665	Screw TE Din 933 M 12x30 T.F. for 48056	21	61596	Gasket 40-62-7 for 48056	43	AI265	Cot Inox ME 80 Evo for 48056	66
62666	Hex.Nut Din 934 M8 for 48056	22	AP726	Round Sensor L=2000 SO2020-2400IX for 48056	44	AG299	Base DX Rid. ME 80 Evo for 48056	67

PARTS BREAKDOWN

ITEM	MODEL
48056	MM-IT-0080-ETL

Item No.	Description	Position	Item No.	Description	Position	Item No.	Description	Position
AG300	Base SX ME 80 Evo for 48056	68	62639	Reducer CM50 71 B14 I50 80 Evo for 48056	75	AP733	Sheet 2 Puls. IX ME 80 Evo EL/ETL for 48056	82
62635	Bases Union Pipe ME 80 Evo for 48056	69	61585	Shaft Support SX Evo for 48056	76	AP734	Sheet Int 2 Puls IX ME 80 Evo EL/ETL for 48056	83
AC923	Female Blade IP 80 BA XP for 48056	70	AP735	Basin Cover ME 80 Evo ETL for 48056	77	61595	Transc. Pin Femm L = 220 M and 120 Evo for 48056	84
62628	Male Blade IP 80 BA XP for 48056	71	AP729	Motor Carter Band ME 80 Evo EL/ETL for 48056	78	61598	Transc. Pin Masc L = 220 ME 120 Evo for 48056	85
61592	Flange Support ME 80 Evo for 48056	72	AP730	Motor Carter ME 80 Evo EL/ETL for 48056	79	AM961	Ground Warning Label Diam.22 for 48056	86
61605	Ring Gear ME 80 Evo for 48056	73	AP731	Motor Carter Shell ME 80 Evo EL/ETL for 48056	80			
62638	Reducer Block Bracket ME 80 Evo for 48056	74	AP732	Motor Shelf ME 80 Evo EL/ETL for 48056	81			