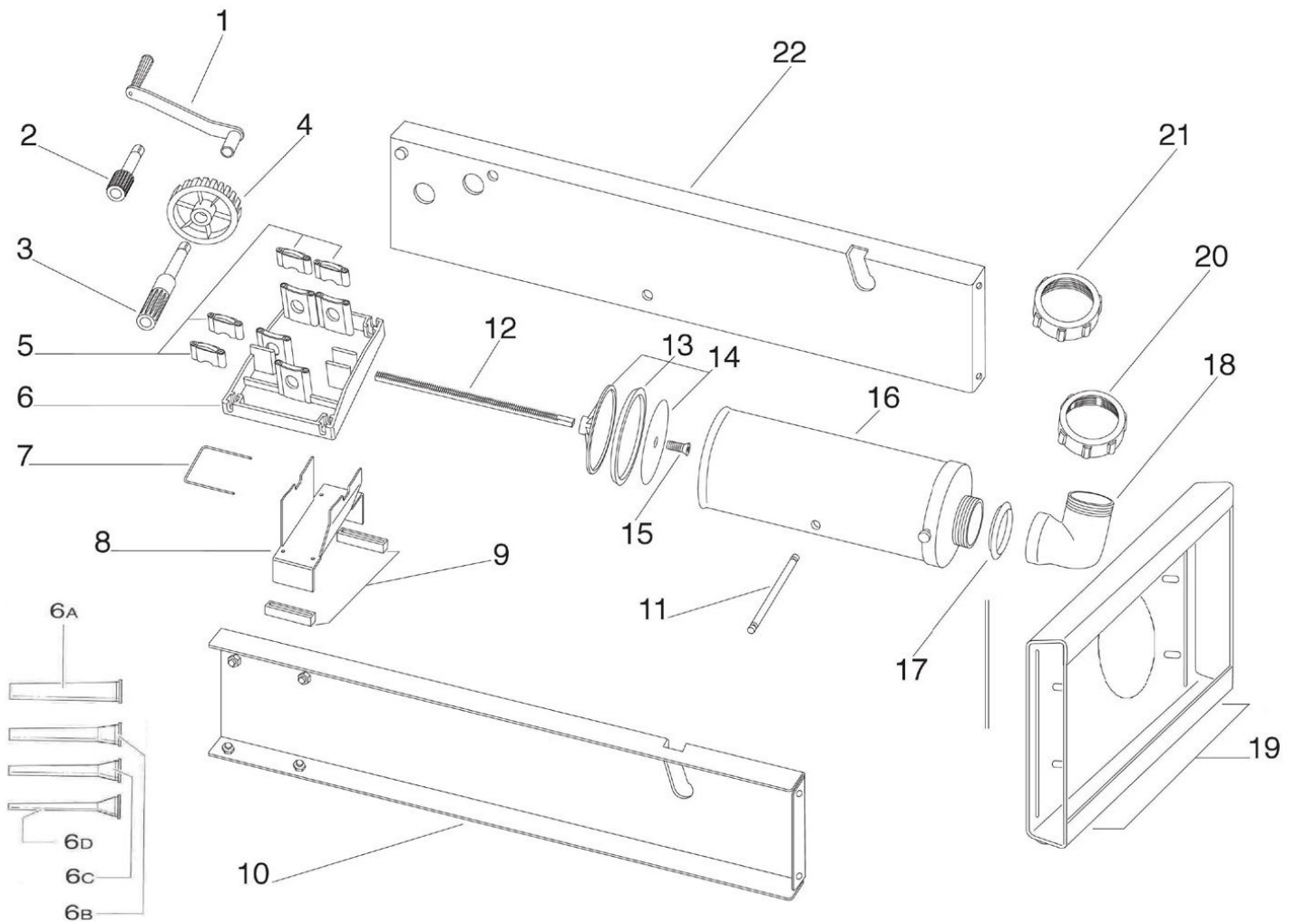


PARTS BREAKDOWN

ITEM

48167



PARTS BREAKDOWN

ITEM

48167

Item No.	Description	Position	Item No.	Description	Position	Item No.	Description	Position
AQ091	Crank for 48167	1	AQ097	Crankcase Gears Vertical Series for 48167	8	AQ105	Corner Junction Gasket Vertical Series for 48167	17
45090	Forward Motion Pin (Slow) for 48167	2	AQ098	Rubber Foot for 48167	9	AQ106	Corner Junction Vertical Series for 48167	18
AQ092	Backward Motion Pin (Fast) for 48167	3	AQ113	5kg Close Casing Vertical for 48167	10	AQ117	Inox Foot Vertical Series for 48167	19
AI869	Large Tooth Gear for 48167	4	AQ114	Crossbar Casing for 48167	11	AQ108	Aluminum Nut for 48167	20
AQ118	Gear (Fast Motion) Steel for 48167	4	AQ115	5kg Rack for 48167	12	AQ109	Ring Nut Vertical Series for 48167	21
AQ093	Couple Clamps for 48167	5	AQ102	Seal Buffer for 48167	13	AQ119	5kg Open Casing Vertical for 48167	22
AQ094	Flange Complete for 48167	6	AQ103	Buffer+Cover for 48167	14	AQ120	5kg Casing Horizontal Red for 48167	23
AQ095	Set of Filling Tubes for 48167	6a, 6b, 6c, 6d	AQ104	Inox Screw 8x40 for 48167	15			
AQ096	Tube Lock for 48167	7	AQ116	5kg Stainless Steel Tube for 48167	16			