



REFRIGERATION

SERVING THE FOOD INDUSTRY SINCE 1951

REFRIGERATED TOPPING RAILS WITH SNEEZE GUARD

Item: 46679 / 41937 / 46680

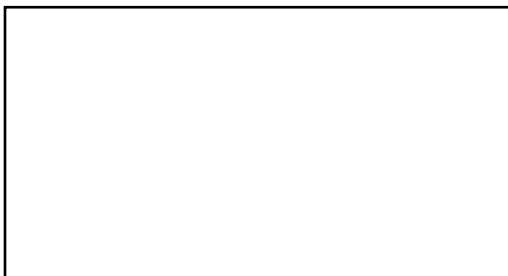
Model: RS-CN-0004-P / RS-CN-0006-P / RS-CN-0009-P



41937 Shown

Pans not included

These refrigerated topping rails are perfectly designed to store and keep all ingredients fresh to a certain temperature holding time. Easy to accommodate various combination size of plastics or stainless steel table pans.



Authorized Dealer



WARRANTY
PARTS AND LABOR



NEMA
5 - 15
125 VAC / 15 AMP

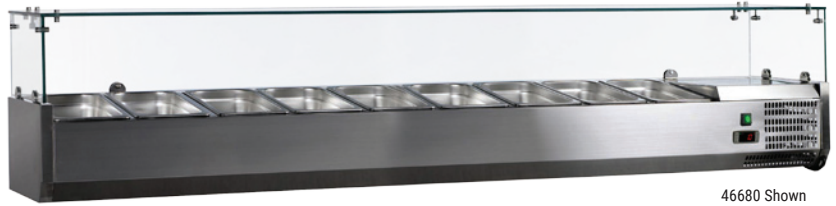


REFRIGERATION

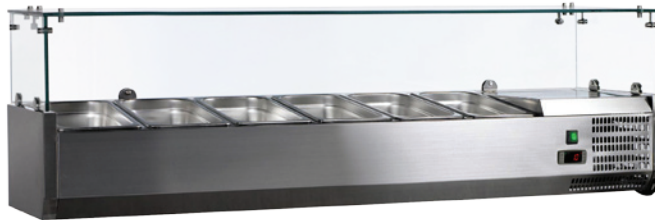
REFRIGERATED TOPPING RAILS WITH SNEEZE GUARD



46679 Shown
Pans not included



46680 Shown
Pans not included

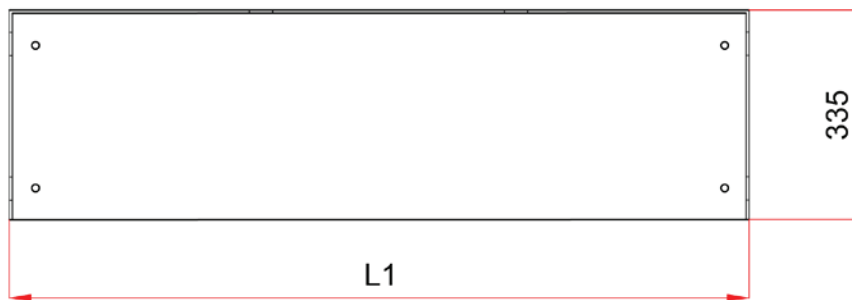
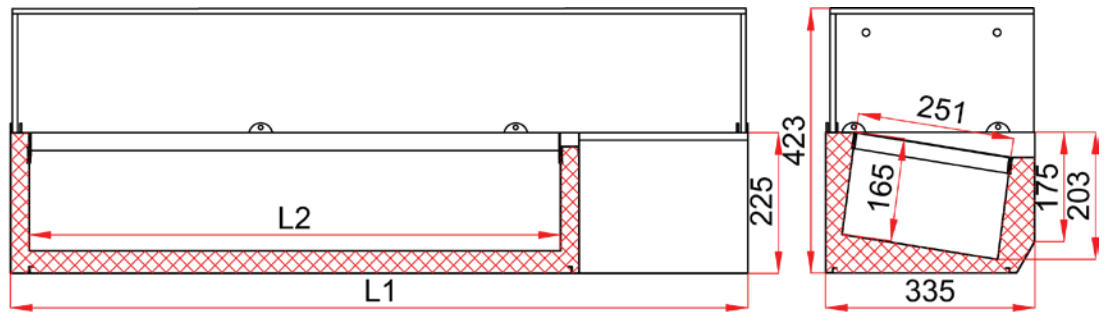


41937 Shown
Pans not included

TECHNICAL SPECIFICATION

ITEM NUMBER	46679	41937	46680
MODEL	RS-CN-0004-P	RS-CN-0006-P	RS-CN-0009-P
PAN CAPACITY	4 x GN 1/3	6 x GN 1/3	9 x GN1/3
ELECTRICAL	1.6A	1.8A	2A
POWER	140W	140W	140W
REFRIGERANT	R600a	R600a	R600a
TEMPERATURE RANGE	36~50°F	36~50°F	36~50°F
PLUG TYPE	5-15P	5-15P	5-15P
NET DIMENSIONS	47" x 15.5" x 17" 1200 x 395 x 435mm	59" x 15.5" x 17" 1500 x 395 x 435mm	78.7" x 15.5" x 17" 2000 x 395 x 435mm
GROSS DIMENSIONS	48.8" x 17" x 18" 1240 x 435 x 460mm	60.6" x 14.7" x 18" 1540 x 375 x 460mm	80" x 17" x 18" 2040 x 435 x 460mm
NET WEIGHT	40 kg. 88 lbs.	60 kg. 132 lbs.	80 kg. 176 lbs.
GROSS WEIGHT	80 kg. 176 lbs.	106 kg. 234 lbs.	128 kg. 282 lbs.
CERTIFICATIONS	ETL / ETL Sanitation	ETL / ETL Sanitation	ETL / ETL Sanitation

	46679	41937	46680
L1	1180	1480	1980
L2	850	1150	1650



OMCAN INC.

Telephone: 1-800-465-0234
 Fax: (905) 607-0234
 E-mail: sales@omcan.com
 Website: www.omcan.com



Follow us to keep up to date with the latest news and offers

