



# STORAGE SOLUTION

SERVING THE FOOD INDUSTRY SINCE 1951

## EPOXY STOCK SHELVES & ACCESSORIES



The perfect choice for keeping stock within reach. Turn unused space into a neatly organized storage center adaptable to your specific needs. The open wire construction maximizes light and circulation of air to keep stored items dry and ventilated. Our shelves are sturdily constructed to endure everyday handling.



Authorized Dealer



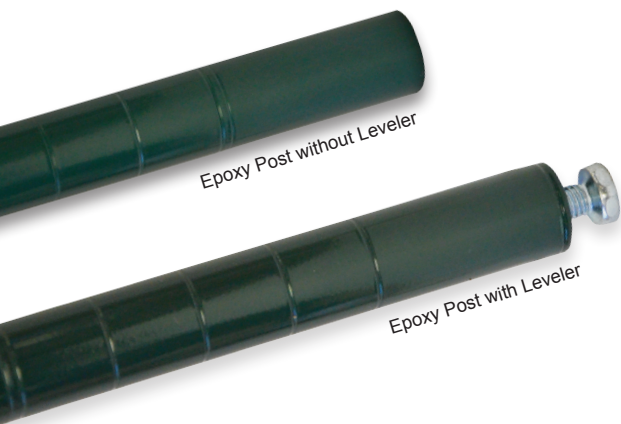
### SIZES

Epoxy Stock Shelves			
ITEM	DESCRIPTION	ITEM	DESCRIPTION
20127	Epoxy Shelf 14" x 24"	24234	Epoxy Shelf 21" x 24"
20128	Epoxy Shelf 14" x 30"	24235	Epoxy Shelf 21" x 30"
20129	Epoxy Shelf 14" x 36"	24236	Epoxy Shelf 21" x 36"
20130	Epoxy Shelf 14" x 42"	24237	Epoxy Shelf 21" x 42"
20131	Epoxy Shelf 14" x 48"	24238	Epoxy Shelf 21" x 48"
20132	Epoxy Shelf 14" x 54"	24239	Epoxy Shelf 21" x 54"
* 20133	Epoxy Shelf 14" x 60"	* 24240	Epoxy Shelf 21" x 60"
* 20134	Epoxy Shelf 14" x 72"	* 24241	Epoxy Shelf 21" x 72"
20135	Epoxy Shelf 18" x 24"	20143	Epoxy Shelf 24" x 24"
20136	Epoxy Shelf 18" x 30"	20144	Epoxy Shelf 24" x 30"
20137	Epoxy Shelf 18" x 36"	20145	Epoxy Shelf 24" x 36"
20138	Epoxy Shelf 18" x 42"	20146	Epoxy Shelf 24" x 42"
20139	Epoxy Shelf 18" x 48"	20147	Epoxy Shelf 24" x 48"
20140	Epoxy Shelf 18" x 54"	20148	Epoxy Shelf 24" x 54"
* 20141	Epoxy Shelf 18" x 60"	* 20149	Epoxy Shelf 24" x 60"
* 20142	Epoxy Shelf 18" x 72"	* 20150	Epoxy Shelf 24" x 72"



### POSTS

Posts With or Without Leveler			
ITEM	DESCRIPTION	ITEM	DESCRIPTION
23637	Epoxy Post 13" with Leveler	31369	Epoxy Post 34" without Leveler
16787	Epoxy Post 34" with Leveler	31370	Epoxy Post 54" without Leveler
20123	Epoxy Post 54" with Leveler	31371	Epoxy Post 64" without Leveler
20124	Epoxy Post 64" with Leveler	31372	Epoxy Post 72" without Leveler
20125	Epoxy Post 72" with Leveler	31373	Epoxy Post 74" without Leveler
23638	Epoxy Post 74" with Leveler	31374	Epoxy Post 84" without Leveler
20126	Epoxy Post 84" with Leveler		



### OMCAN INC.

Telephone: 1-800-465-0234  
 Fax: (905) 607-0234  
 E-mail: sales@omcan.com  
 Website: www.omcan.com



Follow us to keep up to date with the latest news and offers



# STORAGE SOLUTION

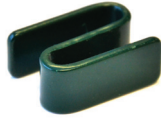
## EPOXY STOCK SHELVES & ACCESSORIES



5" Industrial Caster Without Brakes



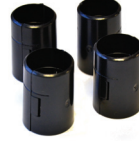
5" Industrial Caster With Brakes



S Clips



Foot Plate for Wire Shelving



Black Abs Sleeves



Leveler Bolts



## OTHER ACCESSORIES

### Shelves / Casters / Plastic Connectors

ITEM	DESCRIPTION	ITEM	DESCRIPTION
14460	5" Industrial Caster without brakes (Chrome & Epoxy)	24252	14" Wall Bracket Epoxy
14461	5" Industrial Caster with brakes (Chrome & Epoxy)	24253	18" Wall Bracket Epoxy
18304	Black ABS sleeves (4/ bag)	24254	24" Wall Bracket Epoxy
19974	S clips to connect shelves Epoxy	24257	14" Pressure Fit Shelf Divider Epoxy
14462	End Cap	24258	18" Pressure Fit Shelf Divider Epoxy
14463	Insert	24828	Post Clamp for Wire Shelving - Epoxy
14464	Leveler Bolts	24830	Foot Plate for Wire Shelving - Epoxy

## WIRE SHELVING KITS

### Include shelves / posts and levelers

ITEM	DESCRIPTION
45170	(4pc.)18" x 36" shelves, (4 set) 72" segmented posts, (16pc.) Clips, (4pc.) Levelers. Dimensions: 18" x 36" x 72"
45171	(4pc.)18" x 48" shelves, (4 set) 72" segmented posts, (16pc.) Clips, (4pc.) Levelers. Dimensions: 18" x 48" x 72"
45172	(4pc.)18" x 60" shelves, (4 set) 72" segmented posts, (16pc.) Clips, (4pc.) Levelers. Dimensions: 18" x 60" x 72"
45173	(4pc.)24" x 36" shelves, (4 set) 72" segmented posts, (16pc.) Clips, (4pc.) Levelers. Dimensions: 24" x 36" x 72"
45174	(4pc.)24" x 48" shelves, (4 set) 72" segmented posts, (16pc.) Clips, (4pc.) Levelers. Dimensions: 24" x 48" x 72"
45175	(4pc.)24" x 60" shelves, (4 set) 72" segmented posts, (16pc.) Clips, (4pc.) Levelers. Dimensions: 24" x 60" x 72"

## WARRANTY INFORMATION FOR CHROME AND EPOXY SHELVES

Omcan Manufacturing & Distributing Company Inc. and Omcan Inc. provides warranty against all defects of material and manufacturing, as well as for defective assembling, for its wire shelving (Chrome and Green Epoxy). Omcan will replace any defective unit for a period of up to 6 months from original date of installation, provided they have been properly installed and maintained. Omcan is liable to replace said defective piece, but under no circumstance will we pay any labour claims or subsequent damage.

Green Epoxy finish shelves are further warrantied against rust formation over more than 5 percent of the shelving surface area for five years from the original date of installation.

## OMCAN INC.

Telephone: 1-800-465-0234  
 Fax: (905) 607-0234  
 E-mail: sales@omcan.com  
 Website: www.omcan.com



Follow us to keep up to date with the latest news and offers

